

Crime Strategy Bridgend County Borough

CONTENTS.....	Page 1
GLOSSARY OF TERMS.....	Page 2
CONTACT FOR FUTHER INFORMATION.....	Page 3
MESSAGE FROM THE CHAIR OF BRIDGEND COMMUNITY SAFETY PARTNERSHIP.....	Page 4
STRATEGIC AIMS.....	Page 5
PURPOSE OF THE PLAN.....	Page 5
SCOPE OF THE STRATEGY.....	Page 5
PROFILE OF BRIDGEND COUNTY BOROUGH.....	Page 5
FAMILY OF PARTNERSHIPS.....	Page 6
PARTNERSHIPS MAKE A DIFFERENCE.....	Page 6
CRIME AUDIT & NEEDS ANALYSIS.....	Page 7
NATIONAL STRATEGIC LINKS.....	Page 8
HOME OFFICE TARGETS.....	Pages 8-9
OTHER ISSUES THAT WILL IMPACT ON THE STRATEGY.....	Pages 10-12
LOCAL STRATEGIC LINKS.....	Page 13
TARGETS AGREED LOCALLY.....	Pages 14-17
REASSURING THE PUBLIC.....	Page 18
COMMUNICATION PROCESS.....	Page 19
STRUCTURE OF THE PARTNERSHIP.....	Page 19
BRIDGEND COMMUNITY SAFETY PARTNERSHIP GROUP STRUCTURE.....	Pages 20-27
ACTION PLAN TARGET FIGURES.....	Page 28-39
ACTION PLAN PLANNED ACTIONS.....	Pages 40-57

Pen-y-bont ar Ogwr
Mwy Diogel



Safer Bridgend

GLOSSARY OF TERMS

BAVO	-	Bridgend Association of Voluntary Organisations
BCB	-	Bridgend County Borough
BCBC	-	Bridgend County Borough Council
BSC	-	Building Safer Communities (Fund)
BCU	-	Basic Command Unit
CSP	-	Community Safety Partnership
CTC	-	Communities that Care
CYPPF	-	Children and Young People's Partnership Framework
HMP & YOI	-	Her Majesty's Prison and Youth Offending Institute
LCJB	-	Local Criminal Justice Board
LHB	-	Local Health Board
OLG	-	Overarching Leadership Group
PCSO	-	Police Community Support Officer
SMAT	-	Substance Misuse Action team
WAG	-	Welsh Assembly Government
YOT	-	Youth Offending Team
YIP	-	Youth Inclusion Programme
YISP	-	Youth Inclusion Support Panel



For further details about this plan, please contact:

John Davies

Community Safety Partnership Coordinator
3rd floor Derwen House,
Court Road,
Bridgend.
CF31 1BE
Tel:01656 643643
Email: communitysafety@bridgend.gov.uk



MESSAGE FROM THE CHAIR OF BRIDGEND COMMUNITY SAFETY PARTNERSHIP

It is helpful to view the challenging programmes set out in these plans, first and foremost against our statutory function, within the framework of the Crime and Disorder Act 1998.

All the work that we have been doing with our partners to build this strategy, and themes of performance, now fits conveniently into these plans. This provides us with the clarity and focus to deliver a service to the public within the County Borough of Bridgend

A key element in modernising the monitoring of the Partnership's performance is integrated information technology. In future years evidence of performance will be obtained from the Home Office iQuanta database.

We are very fortunate to have the support of motivated and committed people who will meet the challenges to deliver the programmes for improvement that we have set. Bridgend Community Safety Partnership, being one of the best performing Partnerships in the country, qualifies this.

The future of joint working will be enhanced in 2005, with the provision of a Partnership office at Bridgend.

We will continue to work towards becoming a beacon Partnership in terms of performance, joint working and vision.

Keri Lewis
Chief Executive
Bridgend County Borough Council

STRATEGIC AIMS

Bridgend Community Safety Partnership aims to make Bridgend County Borough a safer place to live, work, visit and invest in. This will be achieved through agreed targets and performance management to reduce overall recorded crime by 17.5% by the end of March 2008.

Addressing the issue of Community Safety requires a holistic approach, tackling the needs of both individuals and communities to enable them to feel safer and enjoy increased opportunities within their local communities. Consequently a wide range of agencies are represented within the Partnership to ensure a balanced approach to the issues of crime reduction, prevention and addressing social inclusion.

PURPOSE OF THE PLAN

The Bridgend Community Safety Partnership Crime and Disorder Strategy 2005-2008 sets out how the Partnership aims to address the Community Safety Agenda within the County Borough. Targets contained within Bridgend Community Safety Partnership Crime and Disorder Strategy are reflected by Home Office and locally agreed targets.

SCOPE OF THE STRATEGY

Crime reporting, detection and conviction rates form a key element of the Crime and Disorder Strategy. Alongside these areas, issues including gender, race, disability, road safety, supporting vulnerable adults and alcohol related harm form an equally important part of the complete Community Safety agenda. To this end, the Crime and Disorder Strategy aligns closely with the joint Bridgend Community Strategy 2004-2016, Bridgend Health, Social Care and Well-Being Strategy 2005-2008 and Children and Young People's Partnership Framework.

PROFILE OF COUNTY BOROUGH

The County Borough of Bridgend covers an area of approximately 20 kilometres, taking in the Llynfi, Garw and Ogmore Valleys. The Borough has a population of approximately 128,645 (as per the 2001 Census) living in 39 electoral wards divided into three sectors for policing purposes. Bridgend, which is the largest area, has a population in excess of 53,000 (which includes Pencoed), Maesteg a population of 22,700 and Porthcawl a population of 18,000.

FAMILY OF PARTNERSHIPS

In Wales, partnerships are known as Community Safety Partnerships and in England as Crime Reduction Partnerships. Listed below are the families of Partnerships that our performance will be measured against.

Kent – Dover
South Wales-Bridgend County Borough
South Wales - Vale of Glamorgan
South Wales - Neath & Port Talbot
Gwent - Caerphilly
South Yorkshire - Barnsley
Greater Manchester - Wigan
South Yorkshire - Rotherham
Gwent - Torfaen
Cheshire - Warrington
Cleveland - Redcar and Cleveland
Warwickshire - Nineteen & Bedworth
Northamptonshire - Wellingborough
South Yorkshire - Doncaster
Cambridgeshire - Peterborough

PARTNERSHIPS MAKE THE DIFFERENCE

The Partnership is made up of all the key players locally, who have an interest in community safety. It recognises that crime reduction is the responsibility of everyone, not just one or two agencies.

The setting up of a Partnership office at Derwen House in Court Road, Bridgend will not only enhance but also provide a base from which Partner agencies can develop joint working.

This has been made possible by contributions and support from such partners as South Wales Police, Bridgend Victim Support, Bridgend Community Safety Partnership, Bridgend Children and Young Peoples Partnership, South Wales Fire & Rescue Service, Bridgend Association of Voluntary Organisations, Bridgend County Borough Council, Bridgend Youth Offending Team and Bridgend Local Health Board.

CRIME AUDIT AND NEEDS ANALYSIS

An Audit of Crime and Disorder in a local area is about “understanding what is happening in the Partnership area and using that information effectively to help and promote safe and healthy communities” (Home Office ‘Audit Toolkit’).

Undertaking an audit is a statutory requirement. It is also essential in order to identify local needs and experiences and to understand what solutions might be effective.

Our audit was carried out to examine levels of statistical information to gain a wide view of community safety and crime and disorder issues in the County Borough

The main source of information used in this audit came from a wide range of agencies and the public.

In addition, the results of the consultation process undertaken in developing the Substance Misuse Strategy, Health, Social Care and Well Being Strategy, Bridgend County Borough Regeneration Strategy and Bridgend County Borough Community Strategy have also been referred to in the audit.

To underpin the audit process, a consultation day was also held in Bridgend on the 6th December 2004, where delegates from across the voluntary, business and statutory sectors discussed local crime and disorder issues for inclusion in the strategy.

Eight main themes identified by the Audit, Crime Concern Cymru and South Wales Police Authority and supported by delegates during the conference are included in the strategy. These are Burglary and Violent Crime, Substance Misuse, Anti Social Behaviour, Vehicle Related Crime, Arson, Domestic Violence and Youth Prevention

It has been highlighted in the recent British Crime Survey that people are concerned about crime. Therefore, Bridgend Community Safety Partnership intends to tackle the fight against crime and disorder in our communities.

In setting both Home Office and local targets, reference has been made to crime patterns and trends that affect our communities and questions people about their experience of crime levels in the County.

NATIONAL STRATEGIC LINKS

- Crown Prosecution Service Strategic Plan 2003-2006 'Independence and Fairness of Decision Making'
- All Wales Youth Offending Strategy linked to the Children & Young People's Framework Partnerships.
- National Probation Service Multi-Agency Public Protection Report 2003-2004
- Home Office Tracking Prolific Offenders to Reduce Crime
- The National Policing Plan 2005-2006 to 2007-2008
- National Drugs Strategy Tackling Drugs. 'Keeping Communities Safe from Drugs'
- Race Relations (Amendment) Act
- White Paper Building Communities, Beating Crime
- Criminal Justice Act 2004

HOME OFFICE TARGETS

Domestic Burglaries

These will be monitored through the development of Partnership intelligence to target culprits, also through the use of forensic evidence and a detective allocated to each reported burglary.

Theft of Motor Vehicle/Theft from Motor Vehicle/Motor Vehicle Interference

All reported auto crime will be monitored daily. Awareness of victims and potential victims will be raised through crime prevention advice. Partnership intelligence will be used to identify persistent offenders, hot spot areas will be targeted for such crime, police will research all reported incidents through Police Car Clinics to gather forensic evidence to catch and convict offenders.

HOME OFFICE TARGETS (Continued)

Theft of Pedal Cycle

Through positive crime prevention advice, cycle marking schemes and clinics, monitoring of reported thefts of pedal cycles and identification and targeting of persistent offenders. Police monitoring reported crimes for patterns of offending.

Theft from the Person

Through information identifying hot spots of such crime, ensuring high visibility patrols in affected areas, positive crime prevention advice, and gathering of intelligence to identify and target persistent offenders. Police monitoring of reported crimes for crime patterns.

Criminal Damage

Monitoring hot spots, targeting of affected areas by Police and Police Community Support Officers and Specials, providing high profile uniform presence including greater use of CCTV, closer liaison with Local Authority CCTV department, police monitoring of incidents, high visibility presence in retail outlets and bus stations, through use of the Partnership Antisocial Behaviour Intervention process.

Wounding Assaults

Monitoring of crimes and hot spot areas, high visibility uniform patrols in such areas and in areas of licensed premises, through the involvement of Police Community Support Officers and Specials in town centre operations, low tolerance towards such offenders, positive approach towards arrest and charge. Targeting of late night crime and disorder, robust enforcement of licensing regulations, monitoring of applications received under the licensing Act 2003.

Personal Robbery

Monitoring of reported crimes, detective attendance in respect of all such crimes, raising awareness of victims or potential victims, identification and targeting of persistent offenders

OTHER ISSUES THAT WILL IMPACT ON OUR STRATEGY DURING 2005-2008

Business Crime

South Wales Police are currently piloting a review of the effect that crime has on businesses. The findings of this review will be released later in 2005. At present figures indicate that 16% of all crime recorded across South Wales will have some kind of impact on the business community e.g. retail or building sectors and will not only affect large organisations, but smaller businesses such as your local corner shop. Crimes of arson, theft, criminal damage and motor vehicle related crime like theft of a vehicle or theft from a vehicle or vehicle interference will in turn have a damaging impact on the economy of Bridgend County Borough.

The development of an inclusive approach with the business community is therefore seen as the key to providing the right kind of environment for people to enjoy. The funding and appointment of further Police Community Support Officers, together with an accreditation scheme for existing security staff, are some of the ways forward.

South Wales Police Roads Policing Strategy reflected through:

Consultation and solutions to local problems. By improved intelligence gathering sharing of information and analysis that will assist in the process of delivering improved 'roads policing' tackling criminality on our roads, reduce road deaths and injury, maintaining order and providing public reassurance.

Health Inequalities Impact Assessment.

The Bridgend County Borough Health, Social Care & Well-Being Needs Assessment highlighted a higher rate of children involved in road traffic collisions in the county than the Welsh average. Based on Police data 1995 to 2000.

A Health Inequalities Impact Assessment (HIIA) aims to raise awareness and encourage planners and service developers to begin to consider the impact their projects will have on health inequalities. This may be part of a cultural change that needs to happen within the organisation as a whole, whereby every effort is made to provide services as equitably as possible. The HIIA can be used to screen a project for its likely positive or negative impact. Though the project may not be specifically aimed at reducing health inequalities, there may be opportunities to ensure that the overall impact is positive. Bridgend Community Safety Partnership endorses this proposal.

National Standard for Incident Recording

In April 2005, in a pilot due to go live later, South Wales Police will join with another 32 forces throughout the UK for a National Standard for Incident Recording. This will mean that all police/partnership areas will be recording incidents under the same conditions eg. This will have a similar effect that the change to National Crime Recording Standards had to the 2004 Crime Audit, in that the statistics could distort baseline figures for the next Crime and Disorder Strategy/Audit.

OTHER ISSUES THAT WILL IMPACT ON OUR STRATEGY DURING 2005-2008 (continued)

Effects of The Criminal Justice National Report December 2004 on Crime Recording

During 2005-2006 the Audit Commission will review the progress of police forces and police authorities in recording of such data. Reducing crime and making places safer will only be possible if the police have access to reliable and timely information, consistent and effective recording backed up by robust management systems. This is vital in setting national crime reduction targets, tackling local priorities, instilling public confidence in crime statistics and helping to bring offenders to justice. South Wales Police in Bridgend have undertaken this process to ensure that crime recording in Bridgend County is rigorously enforced so that it will stand scrutiny.

Direction from Lord Chief Justice of England and Wales

Involvement of the Magistracy into Community Safety Partnerships. In some areas Magistrates have attended Partnership meetings, but normally in other capacities such as members of the Police or Fire Authorities. Only in a few areas have Magistrates attended meetings in their capacity as Magistrates. This has largely been because there was a perception that there might be a conflict between their independent position as Members of the Judiciary and the function of the Community Safety Partnerships. The most obvious example is in relation to prolific and other priority offenders, where Partnerships have a function in identifying the offenders who are brought before a court

It has, however, been found that attendance at meetings from time to time, where no issues which affect the independent position of the Magistracy have been discussed, has been valuable as a means of being regularly informed as to the plans of partner agencies in areas which impact on criminal justice and initiatives that are being taken. Magistrates have often found it useful to explain the role of the Magistracy and to comment on the efficacy of programmes that are in use or contemplated.

Bridgend Community Safety Partnership will undertake to achieve such representation from the Magistracy on the basis there is much of value that could be gained by Magistrates attending Partnership meetings at an Executive level on an occasional basis. This must, however, be done on the basis that ensures that their independence is understood, respected and reflected in the arrangements

OTHER ISSUES THAT WILL IMPACT ON OUR STRATEGY DURING 2005-2008 (continued)

Mainstreaming Equalities into the Crime and Disorder Strategy and Action Plan

To meet the statutory requirements of the Race Relations (Amended) Act 2000 and other anti-discrimination legislation, Bridgend Community Safety Partnership will embed an equality mainstreaming approach into the way the Strategy and Action Plan are developed and delivered at the local level. The purpose of this approach is to improve the work of the Bridgend Community Safety Partnership by making sure it does not discriminate and that, where possible, it promotes equality.

Fundamental to the equalities mainstreaming approach is the acknowledgment that, while a policy or practice may appear neutral, it may have a differential impact on a person due to their race, gender, disability, age, language, religion and/or sexuality. To avoid such unintended negative consequences, and improve the quality and efficiency of services, the Bridgend Community Safety Partnership will adopt an Equalities Impact Assessment Toolkit to assess and analyse the likely impact of the Strategy and Action Plan so as to eliminate or minimise any negative impact and maximise any opportunities for promoting equality.

LOCAL STRATEGIC LINKS

- Bridgend Community Safety Partnership Substance Misuse Action Plan 2005-2008
- Bridgend County Borough Community Strategy 2005-2016 and Action Plan
- Bridgend Health, Social Care & Well-Being Strategy 2005-2008
- South Wales Police Road Policing Strategy 2004.
- South Wales Police Bridgend Division BCU Plan for 2005-2006
- Bridgend Youth Focus Plan & Bridgend Children and Young People's Partnership Framework
- Never Too Old Joint Strategy for Older People living in the County Borough of Bridgend
- BCBC Local Housing Strategy 2004-2009
- Bridgend Youth Justice Plan 2005-2006
- Bridgend County Borough Regeneration Scheme
- Bridgend Domestic Abuse Strategy 2005-2008

It is recognised that this strategy does not exist in a vacuum, but forms part of a network of strategies and relies on close working links with other Partnerships.

The Bridgend County Borough Community Strategy 2005-2016 is the overarching strategy for the Bridgend County Borough. It contains a specific crosscutting theme of community safety. Its long-term aim is to ensure that crime, disorder and substance misuse are reduced to the levels set in national and local targets at the time.

In the medium term there are two particular cross cutting objectives under the community safety theme in the Community Strategy. These are:

- To reduce the number of children and young people who are at risk of developing anti-social (including criminal) tendencies in their teenage years, because of family circumstances and/or living environment
- To strengthen community spirit and community resolve to challenge anti-social behaviour (including criminal acts), thereby creating an environment in which it is difficult for such behaviour to flourish.

The Community Safety Partnership, as one of the key local partnerships, has a primary role in delivering on this theme and other objectives in the Community Strategy and this document details how this can be achieved. The Statement of Agreed Targets sets out how performance will be measured through Home Office and Local Crime and Disorder Reduction Targets.

TARGETS AGREED LOCALLY

Domestic Violence

Low tolerance attitude towards domestic violence with a positive approach towards arrest and charge. Increasing the amount of information available about cultural and disability issues and the effects of such behaviour strengthen existing domestic abuse services and provide accommodation for men and more provision for women and children fleeing domestic violence

Anti-Social Behavior

The Partnership Anti-Social Behaviour Structure, through the co-ordinator, will monitor the four-stage process of intervention that is now in place across the County to reduce the levels of such behaviour and improve victim involvement and satisfaction with the process. The partnership has placed a strong emphasis on the prevention model especially in relation to young people and the Safer Community Fund has been used to fund a young persons ASB support worker and half-time victim worker to support this approach. The positive impact of those posts work of the Communities First Team and the four-tier model is already having an impact on reducing the number of incidents.

Arson & Fire Setting

South Wales Fire and Rescue Service is committed to joint community fire fighting across Bridgend County Borough to combat acts of arson. This will be achieved through initiatives such as the targeting of commercial premises vulnerable to an arson attack and providing advice to owners. Undertaking arson vulnerability assessments to all schools and providing advice. The further development of a plan for the removal of abandoned vehicles and gas cylinders from our communities. A programme of cognitive behaviour therapy (fire safe programme) for youth offenders. Working with Youth Works on a project in Caerau Park, Maesteg, HMP Parc Prison Project Educating Offenders and the development of School Arson Wardens programme

Priority & Prolific Offenders

In 2004 the Government announced a strategy to address prolific and other priority offenders. This has been included in our strategy with the lead being taken by the Chair of the Bridgend Community Safety Partnership. The three complimentary parts of this strategy are shown below and allows partners to identify and select offenders, using set criteria. The emphasis will be on a joint approach tackling the problems through the Police, Crown Prosecution Service, Prisons, Youth Offending Team and Probation Service with the Overarching Leadership Group and Local Criminal Justice Board overseeing the coordination of the following: -

Prevent & Deter

The Community Safety Partnership has delegated the lead on this element to the Youth Offending Team Manager and the Children and Young Peoples Partnership Co-ordinator. The YOT has identified the target group of persistent young offenders (PYOs) who will be closely monitored and will be engaging with partner agencies in developing appropriate exit strategies. The Prevent and Deter Action Plan outlines how the partnership will be utilising the Youth Works, Youth Crime Prevention approach as its equivalent of a Youth Inclusion Programme and work has begun on a development of a Complex Cases Panel as its equivalent of a Youth Inclusion Support Panel. A multi-agency seminar has been organised to take these plans further. The YOT will also participate in the local POPO's Tactical Monitoring Group Meetings.

Catch & Convict

The Police will lead on this element through fortnightly tactical meetings and strategic meetings every three months with a review remit that will identify offenders by remarking them on the approved matrix every six months (top 20 offenders). Also working to increase the membership of the tactical forum to potentially include Housing Associations, Crown Prosecution Service and Prison Service. As mentioned above the YOT also participates in the Catch and Convict Tactical Monitoring Group and, when appropriate, will identify cases subject to ISSP to be included in the target group.

Rehabilitate & Resettle

The lead agency will be the Probation Service through attending the fortnightly tactical meetings with the Police and Youth Offending Team. Probation will also undertake to develop a working protocol for the management of such offenders expressly in terms of high intensity supervision and high control. This will involve improved joint working to include interventions, such as housing, drug agencies, debt management etc. also to deliver a comprehensive package of interventions in conjunction with the Criminal Justice Act 2004.

Youth Prevention

The Youth Offending Team continues to provide a range of interventions to tackle the risk factors that normally underpin offending behaviour. These include substance misuse, anger management; parenting issues, peer group pressure etc. The Youth Offending Team works closely with a range of partners both in the statutory and voluntary sectors to assist in the provision of various interventions and to develop a range of diversionary activities, which will support the Youth Prevention Strategy.

The Community Safety Partnership has, via the various funding streams available to it, funded a range of projects all designed to have a major impact on youth crime and anti social behaviour. In particular it has supported the role out of the Youth Works model of youth crime prevention from its original base in Wildmill to two further targeted areas. The funding has also allowed the development of several new posts in substance misuse, parenting and victim work, all of which should contribute to the reduction in youth crime.

A major development has been the establishment of a Prevention Task Group, which has in membership the Community Safety Partnership, Children & Young Peoples Partnership Communities First and Substance Misuse Action Team. This ensures that youth prevention is seen as a major component of a general prevention approach involving all the relevant agencies both statutory and voluntary within Bridgend. The YOT Manager chairs the group. One of its major tasks in the coming year will be around the development of the Prevent and Deter Strategy and Action Plan, the first step of which is to host a seminar involving all relevant parties to identify the relevant target groups, assess needs and identify gaps in services and produce an action plan for the way forward.

Substance Misuse

This area will be delivered via the Bridgend Community Safety Substance Misuse Action Plan 2005-08, which outlines a multi-disciplinary approach to addressing the problems associated with substance misuse.

Actions within the strategy address the four aims of the National Strategy, Tackling Substance Misuse in Wales - A Partnership Approach. These being: -

- i) To help children, young people and adults resist substance misuse in order to achieve their full potential in society and to promote sensible drinking in the context of a healthy lifestyle
- ii) To protect families and communities from anti-social and criminal behaviour and health risks associated with substance misuse
- iii) To enable people with substance misuse problems to overcome them and live healthy and fulfilling lives and, in the case of offenders, crime free lives.
- iv) To stifle the availability of illegal drugs on our streets and inappropriate availability of other substances.

The multi-agency Local Substance Misuse Action Team drives the Substance Misuse Action Plan.

Through a full time funded post of Specialist Drugs Intelligence Police Officer to co-ordinate information and intelligence between the Police and Partner agencies. The officer will also carry out intelligence led drug operations in the County aimed at active drug dealers and supply routes into the County Borough

REASSURING THE PUBLIC

Many incidents are not reported to the police and other agencies because of lack of confidence in the criminal justice system and by little or no communication between the agencies and the public. The plan, together with our partners and assisted by the reforms set out in the Criminal Justice Bill, is to restore public confidence in this area by working together more closely and by specifically increasing awareness of minority ethnic communities, thereby increasing reassurance to the victim, witnesses and the public in the Bridgend County Borough area.

Through various actions and funding opportunities eg applying for funding for more Police Community Support Officers (PCSO) to be deployed into our communities. Whilst managed by the Police it will be through Joint Partnership working that the additional deployment of PCSO's will be supported to add to the positive community feedback already received.

South Wales Police in Bridgend automatically refer details of certain types of crimes to Bridgend Victim Support. Crimes such as homicide, sexual offences and domestic violence all require the express consent of the victim.

Victim Support Team will respond by various actions, including telephone calls, letters and/or face-to-face meetings.

In incidents of anti-social behaviour, Victim Support will be actively consulted on these issues together with the Victim Mediation Worker in the Youth Offending Team.

Under the 'No Witness-No Justice' Project to transform the experiences of victims and witnesses of crime thereby reducing the number of trials that collapse. The project will introduce dedicated Witness Care Units bringing the Police and Crown Prosecution Service (CPS) together to jointly meet the individual needs of victims and witnesses. It is planned that every criminal justice area in Wales and England must have a witness care unit set up during 2005.

Bridgend Neighborhood Watch will work with Bridgend Community Safety Partnership, developing the links they already have with South Wales Police through the Crime Reduction Officers, in addition to the positive work of Communities First and links with other Partners.

The Partnership will undertake local resident surveys on issues that have been identified as being problematic across the County of Bridgend.

COMMUNICATION PROCESSES

The Bridgend Crime and Disorder Strategy and Action Plan for 2005-2008 will be available in Welsh and English. Communication effectively is key to ensuring that the public has access to and confidence in the Bridgend Community Safety Partnership Strategy and Action Plan. The Partnership will monitor communications styles to improve accessibility for the whole of the community and will be placed in public places e.g. libraries, GP practices etc. in Bridgend County for public inspection, and on the Partnership website to be established in 2005. The Strategy and Action Plan will also be available in alternative formats by contacting the Partnership Coordinator, details of which are shown on page 3. It is intended to raise public awareness of the Bridgend Community Safety Partnership under the logo of "Safer Bridgend" through use of local media and the publication of an annual report on the work of the Partnership and progress made towards making communities safer.

STRUCTURE OF THE PARTNERSHIP

The key to effectively reducing crime and disorder in our communities is to ensure all partners remain enthusiastic and focused. The Strategy sets out to achieve this vision showing how, through joint working, partners can contribute to meeting our aims.

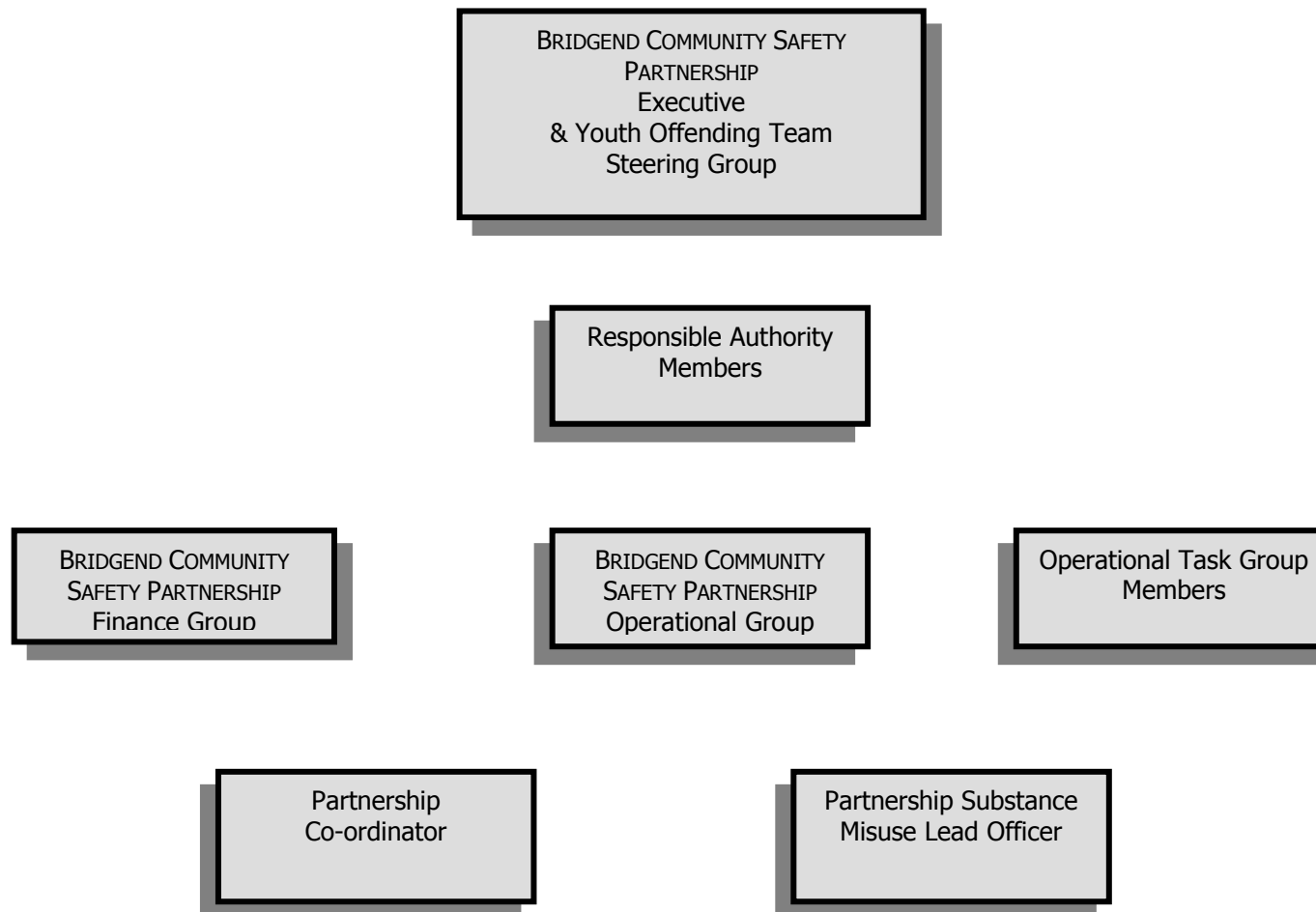
The structure of the Partnership is made up of a Joint Executive and Youth Offending Steering Group, which is chaired by the Chief Executive of Bridgend County Borough Council, Keri Lewis. This group meets quarterly, comprises of senior management, and its main role is to sign off budgets, set strategy and policy, monitor, review and evaluate the performance of the Partnership.

The Youth Offending Steering Group has overall responsibility for the production of the Annual Youth Justice Plan and local performance of the YOT. It delegates its day-to-day responsibility to the YOT Manager who is a member of the Executive Group.

The Partnerships Operational Group is chaired by Superintendent Richard Lewis, South Wales Police Divisional Commander for Bridgend. This Group meets monthly, and its main role will be the monitoring of the five main sources of funding for the Partnership. These are the Basic Command Unit (BCU) Fund, Safer Communities Fund (SCF) and Building Safer Communities Fund (BSF), funding for the Domestic Violence Co-coordinator and Substance Misuse Action Team funding, this process being undertaken by members of the Finance Group ensuring that work commissioned to meet our aims remains financially on course. Other responsibilities include undertaking crime audits for the County used to underpin the process for the development of Crime and Disorder Strategy for the County. The Operational Group also has identified task group leaders responsible for evaluating key Partnership targets. The overall performance of Bridgend Community Safety Partnership's Crime and Disorder Strategy will contribute to the All Wales Crime and Disorder targets.



Bridgend Community Safety Partnership Group Structure



BRIDGEND COMMUNITY SAFETY PARTNERSHIP: EXECUTIVE GROUP
Bridgend Community Safety Partnership: Executive Group Chair

Name	Mr. I Keri Lewis
Designation	Chief Executive
Organisation	Bridgend County Borough Council
Contact address	Civic Offices, Angel Street, Bridgend, CF31 4WB
Telephone number & e-mail	01656 643643

Bridgend Community Safety Partnership: Executive and YOT Management Group Members

As of 1st April 2005

Name	Designation & Organisation	Contact Address	Telephone
Rosemary Fletcher	Director of Health Improvement and Performance	Bridgend Local Health Board, North Court, David Street, Bridgend Industrial Estate, Bridgend, CF31 5DP	01656 754400
Jim McKirdle	Personal Services Directorate	Bridgend County Borough Council, Sunnyside, Bridgend, CF31 4AR	01656 643643
Mal Gay	Youth Offending Team Manager, BCBC	Bridgend YOT, Suite 2, Tremains Business Park, Tremains Road, Bridgend, CF31 1TZ	01656 657243
Councillor Ralph Hughes	South Wales Police Authority Representative	C/O Bridgend County Borough Council, Civic Offices, Angel Street, Bridgend, CF31 4WB	01656 643643
Tejay de Kretser	Director Bridgend Association of Voluntary Organisations	C/O BAVO, 10 Park Street, Bridgend, CF31 4AX	01656 651935
Richard Lewis	Superintendent, Division Commander South Wales Police Bridgend	South Wales Police, Bridgend Police Station, Brackla Street, Bridgend, CF31 1BZ	01656 655555
Graham Avery	Acting Director of Education, Leisure & Community Services	Bridgend County Borough Council, Sunnyside, Bridgend, CF31 4WB	01656 643643
Jeff Matthews	Principle Officer, Criminal Justice Department	South Wales Police, Porthcawl Police Station, John Street, Porthcawl, CF31 3DT	01656 655555
Janet Chaplin	Assistant Chief Probation Officer	Tremains Business Park, Tremains Road, Bridgend CF31 1TZ	01656 674700
Steve Skivens	Senior Divisional Officer. Divisional Commander West Division	South Wales Fire and Rescue Service Division Headquarters West Division Headquarters, Celtic Court, Bridgend, CF32 1TZ	01443 232901
Barbara Street	Assistant Director Personal Services BCBC	Bridgend County Borough Council, Sunnyside, Bridgend, CF31 4AR	01656 643643
Dr Gareth Price	Assistant Director Education & Leisure BCBC	Bridgend County Borough Council, Sunnyside, Bridgend, CF31 4AR	01656 643643
John Davies	Community Safety Partnership Co-ordinator	3 rd floor Derwen House, Court Road, Bridgend, CF31 4WB	01656 643643
Dawn Wright	Accountant BCBC	Civic Offices, Angel Street, Bridgend, CF31 4WB	01656 643643
Louise Fradd	Assistant Director Community Regeneration & Strategic Development	Civic Offices, Angel Street, Bridgend, CF31 4WB	01656 643643

BRIDGEND COMMUNITY SAFETY PARTNERSHIP: RESPONSIBLE AUTHORITY MEMBERS

As of 1st April 2005

Name	Designation & Organisation	Contact Address	Telephone
I Keri Lewis	Chief Executive, Bridgend County Borough Council	BCBC, Civic Offices, Angel Street, Bridgend, CF31 4WB	01656 643643
Rosemary Fletcher	Director of Health Improvement and Performance	Bridgend LHB, North Court, David Street, Bridgend, CF31 3TP	01656 754400
Richard Lewis	Superintendent, Divisional Commander, South Wales Police	South Wales Police, F Division, Bridgend Police Station, Brackla Street, Bridgend CF31 1BZ	01656 655555
Councillor Ralph Jones	South Wales Police Authority Representative	C/O BCBC, Civic Offices, Angel Street, Bridgend, CF31 4WB	01656 643643
Steve Skivens	Senior Divisional Officer. Divisional Commander West Division	South Wales Fire Service Division Headquarters West Division Headquarters, Tremains Way, Bridgend, CF32 1TZ	01443 232901

BRIDGEND COMMUNITY SAFETY PARTNERSHIP: OPERATIONAL GROUP

Bridgend Community Safety Partnership: Operational Group Chair

Name	Superintendent Richard Lewis
Designation	Divisional Commander
Organisation	South Wales Police
Contact address	South Wales Police, Bridgend Police Station, Brackla Street, Bridgend, CF31 1BZ
Telephone number & e-mail	01656 655555

Bridgend Community Safety Partnership: Operational Group Members As of 1st April 2005

Name	Designation & Organisation	Contact Address	Telephone
Jeff Watkins	Community Inspector, South Wales Police Bridgend	Bridgend Police Station, Brackla Street, Bridgend, CF31 1BZ	01656 655555
Joe Ruddy	Chief Inspector, South Wales Police Bridgend	Bridgend Police Station, Brackla Street, Bridgend, CF31 1BZ	01656 655555
Mal Gay	YOT Manager, BCBC	Suite 2, Phase 1, Tremains Business Park, Tremains Road, Bridgend, CF31 1TZ	01656 657243
Carl Haines	South Wales Fire and Rescue Service	South Wales Fire and Rescue Service, Celtic Court, Tremains Way, Bridgend, CF32 1TZ	01443 232901
Paula Wade	Victim Support	3 rd floor Derwen House, Court Road, Bridgend, CF31 1BN	01656 655555
Gaynor Phillips	Trading Standards BCBC	Civic Offices, Angel Street, Bridgend, CF31 4WB	01656 643643
John Davies	Community Safety Partnership Co-ordinator	3 rd floor Derwen House, Court Road, Bridgend, CF31 1BN	01656 643643
Les Jones	Young Peoples Partnerships Framework Co-ordinator, BCBC	3 rd floor Derwen House, Court Road, Bridgend, CF31 1BN	01656 643643
Tejay de Kretser	Director Bridgend Association of Voluntary Organisations	C/O BAVO, 10 Park Street, Bridgend, CF31 4AX	01656 651935
Clive Thomas	Manager	Valley to Coast Housing Association, Court Road, Bridgend	01656 762429

Bridgend Community Safety Partnership Operational Group Members (Cont...)

Name	Designation & Organisation	Contact Address	Telephone
Angharad Evans	Substance Misuse Development Manager, LHB/BCBC	Bridgend Local Health Board, North Court, David Street, Bridgend Industrial Estate, CF31 5TP	01656 754400
William McAllister	National Probation Service	Tremains Business Park, Tremains Road, Bridgend CF 31 1TZ	01656 674700
Jayne Thomas	Manager, CCTV BCBC	Environmental and Planning, BCBC, Bryncethin Depot, Blackmill Road, Bryncethin, Bridgend	01656 643643
Sue Whittaker	Communities First Co-ordinator, BCBC	Communities First, Bridgend County Borough Council, Bryncethin Depot, Blackmill Road, Bryncethin, Bridgend	01656 643643
Yvonne Witchell	Licensing, BCBC	Bridgend CBC, Civic Offices, Angel Street, Bridgend, CF31 4WB	01656 643643
Jen Ryall	Group Manager, Community Learning	Bridgend County Borough Council, Sunnyside, Bridgend, CF31 4AR.	01656 643643
Mary-Anne Rees	Domestic Violence Coordinator	C/o BAVO, 10 Park Street, Bridgend, CF31 4AX	01656 651935
Linda Webb	Business Manager	Bridgend Police Station, Brackla Street, Bridgend, CF31 1BZ	01656 655555
Peter Davies	Partnership Anti-Social Behaviour Coordinator	3 rd floor Derwen House, Court Road, Bridgend, CF31 1 BN	01656 643643
Mike Payne	Group Manager Sports & Recreation Services BCBC	Bridgend County Borough Council, Sunnyside, Bridgend, CF31 4AR.	01656 643643
To be Appointed	Community Safety & Welfare Officer BCBC	3 rd floor Derwen House, Court Road, Bridgend, CF31 1 BN	01656 643643

BRIDGEND COMMUNITY SAFETY PARTNERSHIP: TASK GROUPS & CHAIRS

As of 1st April 2005

Task Group	Task Group Chair	Contact Address	Telephone
Anti Social Behaviour	Peter Davies Partnership Anti Social Behaviour Co-ordinator	3 rd Floor Derwen House Court Road Bridgend CF31 1BN	01656 679558
Fire Setting & Arson	Carl Haines South Wales Fire and Rescue Service	South Wales Fire and Rescue Service, Celtic Court, Tremains Way, Bridgend, CF32 1TZ	01443 232901
Domestic Violence	Mary-Anne REES Co-ordinator	3 rd Floor Derwen House Court Road Bridgend CF31 1BN	01656 651935
Substance Misuse	Angharad Evans Substance Misuse Development Manager	Bridgend Local Health Board, North Court, David Street, Bridgend Industrial Estate, CF31 5TP	01656 754400
CCTV	Jane Thomas, Manager, CCTV BCBC	Environmental and Planning, BCBC, Bryncethin Depot, Blackmill Road, Bryncethin, Bridgend	01656 643643
Youth Crime Prevention	Mal Gay Youth Offending Team Manager	Suite 2, Phase 1, Tremains Business Park, Tremains Road, Bridgend, CF31 1TZ	01656 657243
Late Night Economy	Joe Ruddy Chief Inspector	Bridgend Police Station, Brackla Street, Bridgend, CF31 1BZ	01656 655555

Bridgend Community Safety Partnership: Finance Group Members

As of 1st April 2005

Name	Designation & Organisation	Contact Address	Telephone
Richard Lewis (CHAIR)	Superintendent South Wales Police Bridgend,	South Wales Police, Bridgend Police Station, Brackla Street. Bridgend. CF31 1BZ	01656 655555
Mal Gay	YOT Manager, BCBC	Suite 2, Phase 1, Tremains Business Park, Tremains Road, Bridgend, CF31 1TZ	01656 657243
Linda Webb	Business Manager South Wales Police Bridgend	South Wales Police, Bridgend Police Station, Brackla Street, Bridgend, CF31 1BZ	01656 655555
Angharad Evans	Angharad Evans Substance Misuse Development Manager	Bridgend Local Health Board, North Court, David Street, Bridgend Industrial Estate, CF31 5TP	01656 754400
John Davies	Community Safety Partnership Co-ordinator	3 rd floor Derwen House, Court Road, Bridgend, CF31 1 BN	01656 643643
Les Jones	Young Peoples Partnerships Framework Co-ordinator, BCBC	3 rd floor Derwen House, Court Road, Bridgend, CF31 1 BN	01656 643643
Tejay de Kretser	Director Bridgend Association of Voluntary Organisations	C/o BAVO, 10 Park Street, Bridgend, CF31 4AX	01656 651935
Alwyn Thomas	Partnership Finance Officer	3 rd floor Derwen House, Court Road, Bridgend, CF31 1BN	01656 643643

BRIDGEND COMMUNITY SAFETY PARTNERSHIP COORDINATOR

Name	John Davies	
Designation	Community Safety Partnership Co-ordinator	
Organisation	Bridgend County Borough Council	
Contact Address	3 rd floor Derwen House, Court Road, Bridgend CF31 1BN	
Telephone Number & e-mail	01656 643643	communitysafety@bridgend.gov.uk

BRIDGEND COMMUNITY SAFETY PARTNERSHIP SUBSTANCE MISUSE LEAD OFFICER

Name	Angharad Evans.	
Designation	Substance Misuse Development Manager	
Organisation	Bridgend Local Health Board/County Borough Council	
Contact Address	Bridgend LHB, North Court, David Street, Bridgend, CF31 3TP	
Telephone Number & e-mail	01656 754400	angharad.evans@bridgendlhb.wales.nhs.uk

Bridgend Crime and Disorder Action Plan 2005 - 2008

ALL RECORDED CRIME FOR BRIDGEND COUNTY BOROUGH AREA

There were 12,182 crimes recorded across Bridgend County in 2003/04. This is a rate of 21 per thousand households, compared to an average of 25.1 for its most similar CSPs, showing Bridgend to be in a favorable position.

Offence	2003/2004 (Baseline)	2004/ 005	% Difference Between 2003/04 and 2004/05	2005/ 2006 Target	2006/ 2007 Target	2007/ 2008 Target	% Difference from the Baseline Figure to 2007/ 2008
All Crime	12,182	10,787	-11.5 %	10,509	10,300	10,050	-17.5%

Bridgend Crime and Disorder Action Plan 2005 - 2008

Home Office Targets DOMESTIC BURGLARY

There were 505 domestic burglaries recorded across Bridgend County in 200/04. This is a rate of 9.5 per thousand households, compared to an average of, 19.3 for its most similar CSPs, showing Bridgend to be in a favorable position.

Offence	2003/2004 (Baseline)	2004/2005	% Difference Between 2003/04 And 2004/05	2005/ 2006 Target	2006/ 2007 Target	2007/ 2008 Target	% Difference from the Baseline Figure to 2007/ 2008
Domestic Burglary	505	378	-25.1 %	370	362	358	-29.1 %

THEFT OF MOTOR VEHICLE

There were 781 vehicle thefts recorded in the County Borough in 2003/04, this is a rate of 6.0 per one thousand populations, just below the average of 6.6 for its most similar CSPs

Offence	2003/2004 (Baseline)	2004/2005	% Difference Between 2003/04 And 2004/05	2005/ 2006 Target	2006/ 2007 Target	2007/ 2008 Target	% Difference from the Baseline Figure to 2007/ 2008
Theft of Motor Vehicle	781	574	-26.5%	568	560	550	-29.6%

THEFT FROM MOTOR VEHICLE

There were 1,288 thefts from vehicles recorded in the County Borough in 2003/04. This represents a rate of 9.9, below the average rate of 11.3, for its most similar CSPs.

Offence	2003/2004 (Baseline)	2004/2005	% Difference Between 2003/04 And 2004/05	2005/ 2006 Target	2006/ 2007 Target	2007/ 2008 Target	% Difference from the Baseline Figure to 2007/ 2008
Theft from Motor Vehicle	1,288	1,154	-10.4%	1,146	1,119	1,111	-13.7%

VEHICLE INTERFERENCE

There were 299 crimes of vehicle interference recorded in the County Borough in 2003/04. This represents a rate of 2.3, above the average rate of 2.1, for its most similar CSPs.

Offence	2003/2004 (Baseline)	2004/2005	% Difference Between 2003/04 and 2004/05	2005/ 2006 Target	2006/ 2007 Target	2007 2008 Target	% Difference from the Baseline Figure to 2007/ 2008
Vehicle Interference	299	278	-7.0%	250	230	200	-33.1%

THEFT OF PEDAL CYCLES

There were 159 crimes of theft of bicycles recorded in the County Borough in 2003/04. This represents a rate of 1.2, below the average rate of 1.6, for its most similar CSPs.

Offence	2003/2004 (Baseline)	2004/2005	% Difference between 2003/04 and 2004/05	2005/ 2006 Target	2006/ 2007 Target	2007/ 2008 Target	% Difference from the Baseline Figure to 2007/ 2008
Theft of Pedal Cycle	159	148	-6.9%	130	120	100	-37.1%

THEFT FROM THE PERSON

There were 141 crimes of theft from the person recorded in the County Borough in 2003/04. This represents a rate of 1.1, which is the average, for its most similar CSPs.

Offence	2003/2004 (Baseline)	2004/2005	% Difference Between 2003/04 And 2004/05	2005/ 2006 Target	2006/ 2007 Target	2007/ 2008 Target	% Difference from the Baseline Figure to 2007/ 2008
Theft from The Person	141	103	-27.0%	90	85	80	-43.3%

CRIMINAL DAMAGE

There were 2849 crimes of criminal damage recorded in the County Borough in 2003/04. This represents a rate of 21.7 per one thousand populations, compared to an average of 24.4, for its most similar CSPs.

Offence	2003/2004 (Baseline)	2004/2005	% Difference Between 2003/04 And 2004/05	2005/ 2006 Target	2006/ 2007 Target	2007/ 2008 Target	% Difference from the Baseline Figure to 2007/ 2008
Criminal Damage	2,849	2,482	-12.9%	2,430	2,380	2,355	-17.3%

COMMON ASSAULT (including on police constable)

There were 343 crimes of criminal damage recorded in the County Borough in 2003/04. This represents a rate of 2.7 per one thousand populations, compared to an average of 4.0, for its most similar CSPs.

Offence	2003/2004 (Baseline)	2004/2005	% Difference Between 2003/04 And 2004/05	2005/ 2006 Target	2006/ 2007 Target	2007/ 2008 Target	% Difference from the Baseline Figure to 2007/ 2008
Common Assault	343	325	-29.7%	290	276	250	-27.1%

WOUNDING (Serious & Other)

There were 1,091 wounding recorded in the County Borough in 2003/04. This represents a rate of 8.4 per one thousand populations, slightly above the average of 7.5, for its most similar CSPs.

Offence	2003/2004 (Baseline)	2004/2005	% Difference Between 2003/04 And 2004/05	2005/ 2006 Target	2006/ 2007 Target	2007/ 2008 Target	% Difference from the Baseline Figure to 2007/ 2008
Wounding	1,091	1,091	-0.0%	930	920	898	-17.7%

PERSONAL ROBBERY

There were 15 crimes of robbery of personal property recorded in the County Borough in 2003/04. Bridgend had the lowest rate for this crime type at 0.1 per thousand populations, compared to an average of 0.7, for its most similar CSPs.

Offence	2003/2004 (Baseline)	2004/2005	% Difference Between 2003/04 And 2004/05	2005/ 2006 Target	2006/ 2007 Target	2007/ 2008 Target	% Difference from the Baseline Figure to 2007/ 2008
Personal Robbery	15	10	-33.3%	9	9	8	-46.7%

Local Targets

DOMESTIC ABUSE

There were 1,616 crimes of domestic abuse of personal property recorded in the County Borough in 2003/04. Bridgend had the lowest rate for this crime type at 0.1 per thousand populations, compared to an average of 0.7, for its most similar CSPs.

Offence	2003/2004 (Baseline)	2004/2005 (Projection)	Projected % Difference Between 2003/04 And 2004/05	2005/ 2006 Target	2006/ 2007 Target	2007/ 2008 Target	% Difference from the Baseline Figure to 2007/ 2008
Domestic Violence	1,616	1,500	-116	1,375	1,238	1,115	-31.0%

YOUTH CRIME

There were 588 recorded in the County Borough in 2003/04. Bridgend had the lowest rate for this crime type at 0.1 per thousand populations, compared to an average of 0.7, for its most similar CSPs.

Offence	2003/2004 (Baseline)	2004/2005 (Projection)	Projected % Difference Between 2003/04 And 2004/05	2005/ 2006 Target	2006/ 2007 Target	2007/ 2008 Target	% Difference from the Baseline Figure to 2007/ 2008
Youth Crime	588	690	+17.3%	650	610	560	5%

ANTI-SOCIAL BEHAVIOUR

There were 17,365 incidents recorded in the County Borough in 2003/04. Bridgend had the lowest rate for this crime type at 0.1 per thousand populations, compared to an average of 0.7, for its most similar CSPs.

Offence	2003/2004 (Baseline)	2004/2005 (Projection)	Projected % Difference Between 2003/04 And 2004/05	2005/ 2006 Target	2006/ 2007 Target	2007/ 2008 Target	% Difference from the Baseline Figure to 2007/ 2008
Anti-Social Behaviour	17,365	17,141	-1.3%	17,000	16,900	16,800	-3.3%

FIRE SETTING AND ARSON

There were 1,590 recorded in the County Borough in 2003/04. Bridgend had the lowest rate for this crime type at 0.1 per thousand populations, compared to an average of 0.7, for its most similar CSPs.

Offence	2003/2004 (Baseline)	2004/2005 (Projection)	Projected % Difference Between 2003/04 And 2004/05	2005/ 2006 Target	2006/ 2007 Target	2007/ 2008 Target	% Difference from the Baseline Figure to 2007/ 2008
Fire Setting and Arson	1,590	1,071	-32.6%	1,017	966	918	-42.3%
FDR1 Property Fires Deliberate Fire Setting	106	61	-42.5%	58	55	52	-50.9%
FDR 1V Vehicle Fires Deliberate Fire Setting	215	143	-33.5%	136	129	123	-42.8%

FIRE SETTING AND ARSON (contd.)

FDR 3 Secondary Fires Deliberate Fire Setting	1,066	696	34.7%	661	628	597	-44.0%
False and Malicious Calls to SWFRS for BCBC Area	91	83	-8.8%	79	75	71	-22.0%
Challenged Calls to SWFRS for BCBC Area	27	17	-37%	16	15	14	-48.1%
Abandoned Calls to SWRRS for BCBC Area	85	71	-16.5%	67	64	61	-28.2%

Priority and Prolific Offenders

Offence	2003/2004 (Baseline)	2004/2005 (Projection)	Projected % Difference Between 2003/04 and 2004/05	2005/ 2006 Target	2006/ 2007 Target	2007/ 2008 Target	% Difference from the Baseline Figure to 2007/ 2008
All Crime	12,182	10,787	-11.5 %	-2%	-2%	-2.0%	-17.5%

Substance Misuse

Offence	2003/ 2004 (Baseline)	2004/2005 (Projection)	Projected % Difference Between 2003/04 and 2004/05	2005/ 2006 Target	2006/ 2007 Target	2007/ 2008 Target	% Difference from the Baseline Figure to 2007 / 2008
Drug Trafficking	72	89	+23.6%	89	89	89	+23.6%
Other Drugs Offences	447	445	-0.5%	445	445	445	-0.4%

ACTION PLAN

Home Office Targets

TARGET HEADING	PLANNED ACTION	LEAD AGENCY OR PERSON	TIMESCALE REVIEW DATES MONITORING AND EVALUATION
DOMESTIC BURGLARIES	<ol style="list-style-type: none"> 1. Close monitoring of reported crimes 2. Utilise CHIS's to develop intelligence 3. Target culprits 4. Use of S.O.C. 5. Detective allocated to each reported burglary 6. Continue to support and develop neighbourhood watches 7. Taking action to prevent people becoming victims of crime in their own homes 8. Consequences of crime lesson 	<p>South Wales Police BCU, Bridgend</p> <p>Neighbourhood Watch Public Protection, Trading Standards and LHB All Wales Schools Programme – Police & Education</p>	<p>Monthly & Annual Review 31st March 2006/2007/2008</p> <p>Measures</p> <ol style="list-style-type: none"> 1. Number of arrests made 2. Reduction in reported crimes 3. Number of intelligence led operations 4. Monthly crime statistics 5. Monthly crime statistics 6. Number of watches in County/hot spot areas 7. Number of local radio broadcasts given 8. Number of comprehensive school students ages 11 – 14 years
THEFT OF MOTOR VEHICLE	<ol style="list-style-type: none"> 1. Daily and monthly monitoring of reported auto crime 2. Raise awareness of victims and potential victims 3. Identify and target persistent offenders 4. Target hot spots 5. Working partnership between departments 6. Research all reported incidents 7. Use of SOC/Car Clinic 8. Continue to support and develop neighbourhood watches 9. Know Fear of Car Crime lesson 10. Impact on business community 	<p>South Wales Police BCU, Bridgend</p> <p>Neighbourhood Watch All Wales Schools Programme – Police & Education Partnership/Police</p>	<p>Monthly & Annual Review 31st March 2006/2007/2008</p> <p>Measures</p> <ol style="list-style-type: none"> 1. Attain annual reduction in auto crime 2. Increased crime prevention advice to public and victims of auto crime 3. Number of arrests of offenders and persistent offenders 4. Number of convictions of offenders 5. Amount of ANPR operations 6. Monthly crime statistics 7. Number of forensic hits 8. Number of watches in County/hot spot areas 9. Number of comprehensive school students ages 11-14 years 10. Number of business crimes recorded/hot spots
THEFT FROM MOTOR VEHICLE	As points 1-10 above	As per previous page	<p>Monthly & Annual Review 31st March 2006/2007/2008</p> <p>Measures</p> <p>As points 1-10 above</p>

<p>VEHICLE INTERFERENCE</p>	<p>As points 1-10 above</p>	<p>As per previous page</p>	<p>Monthly & Annual Review 31st March 2006/2007/2008 Measure As points 1-10 above</p>
<p>THEFT OF PEDAL CYCLE</p>	<ol style="list-style-type: none"> 1. Crime prevention advice 2. Cycle marking scheme 3. Monitoring of reported thefts of pedal cycles 4. High visibility patrols of hot spot areas 5. Identification and targeting of persistent offenders 6. Taking action to disrupt traders from operating in the informal economy 7. Consequences of crime lesson 	<p>South Wales Police BCU, Bridgend</p> <p>Trading Standards</p> <p>All Wales Schools Programme – Police & Education</p>	<p>Monthly & Annual Review 31st March 2006/2007/2008 Measure</p> <ol style="list-style-type: none"> 1. Increased crime prevention advice 2. Increased number of cycle marking schemes 3. Number of arrests of offenders 4. Reduction in reported crimes 5. Number of arrests of such offenders 6. Results of quarterly visits to Stormy Down markets and their links with organised crime 7. Number of comprehensive school students ages 11 – 14 years
<p>THEFT FROM THE PERSON</p>	<ol style="list-style-type: none"> 1. Identify hot spots of crime 2. High visibility patrols of affected areas 3. Crime prevention advice 4. Identification and targeting of persistent offenders 5. Monitoring of reported crimes 6. Taking action to disrupt traders from operating in the informal economy 7. Taking action to prevent young people from access to restricted goods 8. Consequences of crime lesson 9. Impact on business community 	<p>South Wales Police BCU, Bridgend</p> <p>Trading Standards</p> <p>All Wales Schools Programme – Police & Education Partnership / Police</p>	<p>Monthly & Annual Review 31st March 2006/2007/2008 Measure</p> <ol style="list-style-type: none"> 1. Attaining annual reduction in reported thefts from the person 2. Monthly crime statistics 3. Increased crime prevention to victims of crime and the general public 4. Number of arrests of such offenders 5. Monthly crime statistics 6. Results of quarterly visits to Stormy Down markets and their links with organised crime 7. Results of Sales to Minors Survey/yearly Crucial Crew event/number of young people involved 8. Number of comprehensive school students ages 11 – 14 years 9. Number of business crimes recorded
<p>CRIMINAL DAMAGE</p>	<ol style="list-style-type: none"> 1. Monitoring hot spots 2. Targeting of affected areas by CBO's and PCSO's. High profile uniform presence including greater use of the divisional CCTV vehicle. Closer liaison with BCBC CCTV department 3. Close monitoring of incidents 4. High visibility presence in retail outlets and bus stations 5. Inclusive work with business community/Partnership to prevent and detect such offences 6. Consequences of crime lesson 	<p>South Wales Police BCU, Bridgend</p> <p>All Wales Schools Programme – Police & Education</p>	<p>Monthly & Annual Review 31st March 2006/2007/2008 Measure</p> <ol style="list-style-type: none"> 1. Increased level of foot patrols in hot spot areas 2. Number of arrests/monthly crime statistics 3. Monthly crime statistics/hot spots 4. Monthly crime statistics/hot spots 5. Detection rates/monthly crime statistics 6. Number of comprehensive school students ages 11 – 14 years

<p>WOUNDING ASSAULTS</p>	<ol style="list-style-type: none"> 1. Monitoring of crimes and hot spot areas 2. High visibility uniform patrols of hot spot areas and in areas of licensed premises 3. Involvement of PCSO's and Specials in town centre operations 4. Low tolerance attitude towards domestic violence with a positive approach towards arrest and charge 5. Ensure quality of evidence obtained in all investigations is of a high standard 6. Target late night crime and disorder 7. Robust enforcement of licensing regulations 8. Monitor applications received under the Licensing Act 2003 9. Monitor number of incidents with a racial element to the incident 10. Monitor number of incidents with a homophobic element to the incident 11. Impact on business community 12. Consequences of crime lesson 	<p>South Wales Police BCU, Bridgend</p> <p>BCBC Licensing Department South Wales Police BCU, Bridgend</p> <p>Partnership/Police</p> <p>All Wales Schools Programme – Police & Education</p>	<p>Monthly & Annual Review 31st March 2006/2007/2008</p> <p>Measure</p> <ol style="list-style-type: none"> 1. Increased detection rate 2. Number of arrests and monthly crime statistics 3. Reduced town centre violence 4. Number of arrests and referrals to the Domestic Violence Unit 5. Number of arrests/convictions for such crimes 6. Number of arrests for crimes of violence 7. Monthly review by STAND Group members 8. STAND group assessment of future targets once first tranche of applications received 9. Number of F92 forms submitted/hot spots 10. Number of F91 forms submitted 11. Crime statistics/hot spots 12. Number of comprehensive school students ages 11 – 14 years
<p>PERSONAL ROBBERY</p>	<ol style="list-style-type: none"> 1. Monitoring and detective attendance in respect of such crime 2. Raised awareness of victims or potential victims and identification and targeting of persistent offenders 3. Monitor number of persistent offenders 4. Consequences of crime lesson 	<p>South Wales Police BCU, Bridgend</p> <p>Probation/YOT/Police</p> <p>All Wales Schools Programme – Police & Education</p>	<p>Monthly & Annual Review 31st March 2006/2007/2008</p> <p>Measure</p> <ol style="list-style-type: none"> 1. Monthly crime statistics and analysis 2. Number of convictions achieved at court/crime prevention information/local media/annual reduction in robbery offences 3. Monthly crime statistics and Partnership PPO monitoring list 4. Number of comprehensive school students ages 11 – 14 years

Local Targets

TARGET HEADING	PLANNED ACTION	LEAD AGENCY OR PERSON	TIMESCALE REVIEW DATES MONITORING AND EVALUATION
<p>DOMESTIC VIOLENCE</p>	<ol style="list-style-type: none"> 1. Monitoring of Domestic Abuse Incidents. 2. Raising awareness via local media. 3. Reduce repeat victims 4. Ensure victim support through Criminal Justice System. (Fast Track etc). 5. A programme of one day multi-agency training 6. Distribution of practitioner guidance booklets 7. Policy review for staff dealing with adult and child victims of domestic abuse. 8. All agencies to include in this policy guidelines for employees who are victims or perpetrators of domestic abuse. 9. Strengthen links between agencies to look at better ways of working efficiently to support victims e.g. Social services. Women's Aid, Police, MARC 10. Look at ways of providing support to children in abusive households. 11. Task group to look at future planning for safe housing provision for victims 	<p>South Wales Police BCU, Bridgend</p> <p>Domestic Abuse Forum</p> <p>Women's Aid Social Services</p> <p>Domestic Abuse Forum</p> <p>Domestic abuse forum</p> <p>MARAC Members</p> <p>Agencies signed up to share information within the MARAC process.</p> <p>Domestic Abuse Forum</p>	<p>Monthly & Annual Review 31st March 2006/2007/2008 Measure</p> <ol style="list-style-type: none"> 1. Identifying Incidents classified as Domestic Abuse 2. Number of Convictions achieved at Court 3. Attain annual reduction in repeat. Victims/reported incidents. 4. Number of referrals to MARAC process 5. Number of training days held 6. Number of booklets distributed 7. Progress report from Domestic Abuse Forum 8. Progress report from Domestic Abuse Forum 9. Progress report from Domestic Abuse Coordinator 10. Progress report from Domestic Abuse Forum 11. Progress report from Task group Leader-Domestic Abuse Coordinator.

<p>DOMESTIC VIOLENCE (Continued)</p>	<p>12. Evaluate existing pilot service and develop permanent provision providing locks, alarms etc for victims</p>	<p>Police</p>	<p>12. Progress report from Domestic Abuse Forum and SW Police Crime Reduction Officers at Bridgend.</p>
	<p>13. Task group to explore the option of the one stop-shop Principle</p>	<p>Domestic Abuse forum to coordinate</p>	<p>13. Progress report from Task Group Leader- Domestic Abuse coordinator</p>
	<p>14. Deliver IDAP (Integrated Domestic Abuse Programme) for convicted perpetrators</p>	<p>Probation</p>	<p>14. Progress report from Domestic Abuse forum Probation</p>
	<p>15. Task group to look at future provision to implement a fast track domestic violence court with a victim advocacy service</p>	<p>CPS, Courts, Police, Women's Aid Education Women's Aid. YPP</p>	<p>15. Progress report from Domestic Abuse coordinator</p>
	<p>16. Task group to raise awareness and understanding of domestic abuse in children and young people</p>	<p>OLG, LCJB All Wales Schools Programme</p>	<p>16. Progress report from Probation Domestic Abuse Co-ordinator</p>
	<p>17. To incorporate relationship/domestic abuse guidance into PSE lessons in secondary and primary education</p>	<p>Education, Women's Aid</p>	<p>17. Number of comprehensive school students ages 11-14 years</p>

TARGET HEADING	PLANNED ACTION	LEAD AGENCY OR PERSON	TIMESCALE REVIEW DATES MONITORING AND EVALUATION
<p>ANTI-SOCIAL BEHAVIOUR</p>	<p>1 Tackle individuals or groups who cause people in Bridgend County, harassment, alarm or distress</p> <p>2. Using Section 59 of the Police Reform Act 2004 to confiscate vehicles including off-road motorcycles involving such behaviour</p> <p>3. Maximise use of Antisocial Behaviour Legislation and ensure that issues referred to the Partnership Problem Solving Group are resolved satisfactorily</p> <p>4. Parenting Co-coordinator to Undertake a review of parenting provision and parenting programmes in the case of difficult to reach parents</p> <p>5. Increase interventions to prevent young people being involved in anti-social behavior in line with Project Dragon- All Wales Solution and Anti social Behavior module due to come on line in 2005</p> <p>6. Diversionary and Outdoor Education Programmes within the County</p> <p>7. Develop Peer Monitoring programmes for young people</p>	<p>Partnership, Anti-Social Behaviour Co-ordinator</p> <p>Police Partnership, Anti-Social Behaviour Co-ordinator BCBC Environment</p> <p>Partnership, Anti-Social Behaviour Co-ordinator Multi-Agency</p> <p>Youth Offending Team Parenting Team Co-ordinator</p> <p>Partnership, Anti-Social Behaviour Co-ordinator</p> <p>Youth Service</p> <p>Youth Service</p>	<p>Monthly & Annual Review 31st March 2006/2007/2008 Measure</p> <p>1. Number of ASB referrals submitted to coordinator/number of hot spot areas identified</p> <p>2. Monitoring Partnership anti-social behaviour such referrals/police monitoring of database for numbers of warnings given numbers of vehicles confiscated/ hot spot areas/Number of complaints to BCBC</p> <p>3. Number of ABC's and case conferences held</p> <p>4. Number of families engaged and parents</p> <p>5. Number of first, second, third and fourth stage letters issued</p> <p>6. Number of referrals from YOT ASB support worker</p> <p>7. Number of events held. Develop Peer Monitoring programme and progress report on Youth Exit</p>

<p>ANTI-SOCIAL BEHAVIOUR (Continued)</p>	<p>8. Get Active Project to target disengaged young people aged 11-25 from Comfort areas of Llynfi Valley, Ogmere Valley, Garw Valley and Pyle/Kenfig Hill/Cornelly</p> <p>9. Positive futures target groups will be young people aged 10-19 years in the Marlas/Caerau/Wildmill areas who are at serious risk of becoming involved in drugs and/or crime</p> <p>10. To establish provision for 8-18 year olds in the Marlas/Caerau/Wildmill areas To create opportunities and vocational chances Regenerate area through efforts of young people, reducing anti-social behaviour, drugs and crime</p> <p>11. CCET Youth Focus Transition Programme for co-ordination of special support interventions for young people aged 14-25 at serious risk of social exclusion</p> <p>12. Develop provision for skate boarding in eight areas of the County</p> <p>13. Deliver informative talks to community/town councils, local focus groups and groups</p>	<p>Youth Services</p> <p>Positive Futures Steering Group</p> <p>Ground Works Police Police Community Support Officers</p> <p>CCET / Post 14 Education Officer</p> <p>Leisure, Parks, Young People's Partnership, Community Councils, Youth Council, Youth Service</p> <p>Partnership Anti Social Behaviour Co-ordinator</p>	<p>8. Number of young people received accredited qualifications Number of young people participated in work-shops Update on work of 7 part-time statutory youth centres and 2 voluntary assisted youth centre A minimum of 10% of participants in the project activities to possess a registered disability of statement of special education need</p> <p>9. Number and range of outdoor pursuits and sports undertaken Number of Drug Awareness Education Programmes Number of Governing Body Asdan awards and ONC courses undertaken</p> <p>10. Number of young people engaged in diversionary work Effect of such interventions on local crime and anti-social behaviour in hot spot areas</p> <p>11 Increase in school attendance Reduction in school exclusions Increased levels of accreditation Improved employability skills</p> <p>12. Number of skate board parks ready for use Number of users per skate park Monitoring of youth annoyance hot spots in these areas</p> <p>13 . Number of presentations to public bodies and local organisations</p>
---	--	---	--

<p>ANTI-SOCIAL BEHAVIOUR (Continued)</p>	<p>14. Improve customer satisfaction in relation to victims of such behaviour</p> <p>15. Deliver training to partners on the referral process.</p> <p>16. Young Person's Substance Misuse Worker Provide specialist substance misuse information and advice for young people especially those deemed at risk of social exclusion and risk of youth offending</p> <p>17. Young Person's Anti-Social Behavior Support Worker To engage with young people and their families identified under the anti-social behaviour structure</p> <p>18. Victim Offender Mediation Worker To work and engage with victims and perpetrators of youth crime and anti-social behaviour</p> <p>19. To reduce truancy, anti social behavior and youth annoyance in Caerau by operating a positive transition programme aimed at 10-14 year olds</p>	<p>Partnership Anti Social Behaviour coordinator</p> <p>Partnership Anti-Social Behaviour Co-ordinator</p> <p>Bridgend Substance Misuse Action Team</p> <p>YOT / Partnership</p> <p>YOT / Partnership</p> <p>Communities First Partnership Caerau</p>	<p>14. Examine 10% of victim related referrals</p> <p>15. Number of presentations given</p> <p>16. Number of people reporting the use of illegal drugs Number of people reporting in appropriate use of prescription only medicines Peoples weekly consumption of alcohol</p> <p>17. To reduce the percentage of youth annoyance incidents in line with agreed targets in hot spot areas</p> <p>18. YOT performance measure to ensure that 75% of youth victims of crime referred to YOT are offered the opportunity to participate in a restorative process and 75% of victims participating are satisfied The same percentage will be the target for those victims referred via the Anti-Social Behaviour Strategy</p> <p>19 Number of 10-14 year olds engaged on programme</p>
---	---	---	---

TARGET HEADING	PLANNED ACTION	LEAD AGENCY OR PERSON	TIMESCALE REVIEW DATES MONITORING AND EVALUATION
<p>FIRE SETTING/ARSON</p> <p>FDR1 Property (Deliberate Fire Setting)</p>	<ol style="list-style-type: none"> 1. Develop partnership joint working with other agencies to combat arson. To consolidate and monitor new arson reduction initiatives within the community. 2. Target commercial premises vulnerable to an arson attack and Provide advice. 3. Arson vulnerability assessments – all schools provide with advice. 4. Plan and develop removal of abandoned vehicles and gas cylinders. 5. Cognitive Behaviour therapy (fire safe programme) for youth offenders. 6. Caerau Park initiative. Co-operate with Youth Works initiative. 7. Parc Prison Initiative. Educating offenders. 8. School Arson Wardens 	<p>South Wales Fire and Rescue Service</p> <p>BCBC / Fire Service</p>	<p>Monthly & Annual Review March 31st 2006/2007/2008</p> <p>Measure</p> <ol style="list-style-type: none"> 1. Number of initiatives 2. Number of premises targeted 3. Number of schools provided with advice 4. Number of vehicles and cylinders removed 5. Number of young people engaged 6. Progress report on Caerau Park Number of offenders engaged 7. Progress report from Fire Service Partnership Representative 8. Number of wardens appointed

<p>FIRE SETTING/ARSON (Continued)</p> <p>FDR1 V Vehicles (Deliberate Fire Setting)</p>	<ol style="list-style-type: none"> 1. Continue to develop partnership with BCBC Waste Management 2. Plan to develop free removal of all abandoned vehicles 3. Refer offenders to Youth Car Crime Programme 4. Cognitive Behaviour (Fire Safety Programme) 5. Impact Road Show to all year 10 pupils 6. Parc Prison initiatives – educating offenders 	<p>Fire Service / BCBC Waste Management and Youth Offending Team</p>	<p>Monthly & Annual Review 31st March 2006/2007/2008</p> <p>Measure</p> <ol style="list-style-type: none"> 1. Progress report from fire and arson task group lead. 2. Number of vehicles removed 3. Number of offenders referred 4. Number of people engaged 5. Number of schools delivered to in County 6. Number of offenders engaged
<p>FALSE AND MALICIOUS CALLS</p>	<ol style="list-style-type: none"> 1. Cell phone call barring 2. Schools liaison programme 3. Project Dragon Data Exchange and Analysis 4. Review of control 'challenge' 5. Leaflet areas surrounding call boxes used for FAM 	<p>Fire Service Control</p>	<p>Monthly & Annual Review 31st March 2006/2007/2008</p> <p>Measure</p> <ol style="list-style-type: none"> 1. Number of callers barred 2. Number of schools visited 3. Analysis supplied by Project Dragon 4. Outcome of review of control challenge 5. Number of leaflets distributed and locations

<p>FIRE SETTING/ARSON (Continued)</p> <p>FDR3 (Secondary)</p>	<ol style="list-style-type: none"> 1. Arson Education via visits to schools Key Stage 3 and 5. 2. Brackla initiative working with Police. 3. Parc Prison initiative. Educating offenders 4. Fire watch – School Arson Wardens 	<p>Fire Service</p>	<p>Monthly & Annual Review 31st March 2006/2007/2008</p> <p><u>Measure</u></p> <ol style="list-style-type: none"> 1. Number of schools visited 2. Effect on crime arson figures in area 3. Number of offenders engaged with 4. Progress report
<p>Challenged (Malicious Calls)</p>	<ol style="list-style-type: none"> 1. Existing Protocol to be maintained and all calls challenged and, where possible, number passed to the Police. Land lines – where number is traced a visit to be made by Fire Officer along with Police. 	<p>Fire Service / Police</p>	<p>Monthly & Annual Review 31st March 2006/2007/2008</p> <p><u>Measure</u></p> <ol style="list-style-type: none"> 1. Number of calls challenged <p>Number of offenders referred to Police Number of visits made by Police and Fire Officers</p>
<p>Abandoned (Malicious Calls)</p>	<ol style="list-style-type: none"> 1. Offenders challenged and numbers passed to Police. Cellular phones – sender challenged with text from Fire Service “Phone will be cut off”. 	<p>Fire Service / Police</p>	<p>Monthly & Annual Review March 31st 2006/2007/2008</p> <p><u>Measure</u></p> <ol style="list-style-type: none"> 1. Number of referrals made to Police <p>Number of callers disconnected</p>

<p>PRIORITY/PROLIFIC OFFENDERS REHABILITATE AND RESETTLE</p>	<ol style="list-style-type: none"> 1. Fortnightly attendance at the Police tasking group, by the PPO probation manager and/or the designated PPO probation officer. 2. Monthly meetings with all relevant partnership agencies. 3. Development of a working protocol for the management of PPO's expressly in terms of high intensity supervision and high control. 4. Establish much improved partnerships to include interventions, such as housing, drugs agencies, debt management etc. 5. To develop a comprehensive package of interventions in conjunction with the Criminal Justice Act 2004. 	<p>South Wales Probation Area, Bridgend District</p>	<p>Monthly & Annual Review 31st March 2006/2007/2008</p> <p>Measure</p> <ol style="list-style-type: none"> 1. Ongoing. Monitoring at monthly PPO meetings 2. 3 monthly review of the scheme by Management 3. To measure the impact of the higher intervention by use of Police Crime Stats 4. Level of compliance on Statutory Order 5. Reconvictions (level of re-offending) whilst subject to a statutory order/successful completion of the statutory order
--	--	--	---

<p>YOUTH PREVENTION</p>	<p>1. YOT in conjunction with Prevention Task Group will Implement the Prevent and Deter Action Plan</p> <p>2. Get Active project will target disengaged young people aged 11- 25 from the Cymorth areas of Llynfi Valley, Ogmere Valley, Garw Valley and Pyle/ Kenfig Hill/Cornelly.</p> <p>The Streets Sports Programme will also operate in the additional Cymorth areas of Wildmill, Brackla Meadows and Chelsea Avenue, Cefn Glas.</p> <p>Seven part-time statutory youth centres and two voluntary assisted youth centres to receive support in facilitating accredited programmes.</p> <p>A minimum of 10% of participants in project activities to possess a registered disability or statement of special educational need.</p> <p>3. Positive futures to target groups of young people aged 10 – 19 years, who are at serious risk of becoming involved in drugs and/or crime.</p> <p>4. Use Outreach and detached work to contact young people</p> <p>5. Parenting Co-ordinator to identify, assess and develop the appropriate use of a range of evaluated (and where possible) accredited parenting programmes.</p>	<p>YOT Prevention Task Group</p> <p>Youth Service</p> <p>Youth Service</p> <p>Youth Service</p> <p>Youth Services</p> <p>Youth services</p> <p>Youth services</p> <p>Youth Offending Team</p>	<p>Monthly & Annual Review 31st March 2006/2007/2008 Measure</p> <p>1. Develop YIP and YISP Progress report</p> <p>2. Number of young people to receive nationally accredited qualification/certification.</p> <p>Number of young people to participate in workshops and activities delivered by the Get Active project and its staff.</p> <p>Progress report on Centre activities and numbers of young people engaged</p> <p>Number of such participants</p> <p>3. Number of persons delivered coaching skills across a range of sports Number of persons given drug awareness education programme and number of Asda Award and OCN courses delivered Number of schools and pupil referral units involved in curricular and extra-curricular activities</p> <p>4. Number of young people contacted and engaged in such work in hotspot areas</p> <p>5. Number of programmes undertaken Number of parents provided with such service Number of satisfied parents/letters received</p>
--------------------------------	--	---	---

<p>YOUTH PREVENTION (Continued)</p>	<p>6. 'Youth Works' Marlas/ Caerau and Wild Mill Investigate need, establish youth provision for 8-18, pull together partner organisations and work with local partners to create opportunities and vocational chances for 16-25 year olds, to motivate and regenerate the area through the efforts of young people and by doing this, reduce crime, drug use, youth annoyance and create social harmony.</p> <p>7. A co-ordinated programme of special support Interventions to aid the successful transition of young People aged between 14-25 years old and at serious Risk of social exclusion into suitable further education, Training or employment opportunities.</p> <p>8. KPC Outreach to reach youth workers targeting areas of need within Cynffig</p>	<p>Groundwork</p> <p>CCET / Post 14 Education Officer</p> <p>KPC Youth Centre</p>	<p>6. A countywide Steering Group employ a Programme Manager, managed by the local Groundwork trust, to establish a local Steering Group and recruit staff to roll-out the Youth Works programme including a number of projects designed and run by local young people to address locally identified needs. In hotspot areas</p> <p>7. Numbers in school attendance. Number of reductions in school exclusions. Increase the number of competencies in the basic and/or key skills required for further education, training and employment. Numbers of levels of accreditation. Number of young people engaged in enhanced knowledge and understanding of the requirements of the 'world of work' and how to adapt to those requirements.</p> <p>8. Number of young people provided with Information & advice, including sexual health, nutrition & exercise Number of community based preventative services provided Number of young people involved in listening services Number of young people referred to other services Number of programmes involving disaffected/excluded or isolated young people Number of leisure & recreational opportunities through existing centre Number of programmes of activities to meet the needs of young people in this area Number of young people provided advise on job applications/searches etc. Report on links with Careers/Youth Gateway</p>
--	---	---	---

<p>YOUTH PREVENTION (Continued)</p>	<p>9. Skate Board Provision for Bridgend County Borough</p> <p>10. Young Person's Substance Misuse Worker Provide specialist substance misuse information and advice for young people especially those deemed at risk of social exclusion and risk of youth offending</p> <p>11. Young Person's Anti-Social Support Worker To engage with young people and their families identified under the anti-social behaviour structure</p> <p>12. Victim Offender Mediation Worker To work and engage with victims and perpetrators of youth crime and anti-social behaviour</p>	<p>Leisure, Parks, Young Peoples Partnership Community Councils Youth Council, Youth Service</p> <p>Bridgend Substance Misuse Action Team</p> <p>YOT / Partnership</p> <p>YOT / Partnership</p>	<p>9. 4 skate parks to be developed and ready for young people 2005-2006 (Ogmore Vale, Maesteg, Bryntirion and one other</p> <p>10. Number of people reporting the use of illegal drugs Number of people reporting in appropriate use of prescription only medicines Peoples weekly consumption of alcohol</p> <p>11. To reduce the percentage of youth annoyance incidents in line with agreed targets and hot spot areas</p> <p>12. YOT performance measure to ensure that 75% of youth crime referred to YOT are offered the opportunity to participate in a restorative process and 75% of victims participating are satisfied</p> <p>The same percentage will be the target for those victims referred via the Anti-Social Behaviour Strategy</p>
--	--	---	--

<p>SUBSTANCE MISUSE</p>	<ol style="list-style-type: none"> 1. Reduce the number of Permanent exclusions from schools and colleges due to substance mis-use 2. Reduce the number of substance misuse related foster placement breakdowns. 3. Actions around club safety, spiked drinks etc 4. Increase the number of seizures, the total quantities of drugs seized and number of drug dealers apprehended. 5. Promote Crime Stoppers initiative with regard to reporting drug dealing 6. Co-ordinate disposal of prescribed medication amnesty campaign 7. Increase the number of test purchase initiatives. 8. Ensure the effective local implementation of the Drug Intervention Programme 	<p>SMAT / BCBC</p> <p>BCBC / Substance misuse coordinator</p> <p>Police / substance misuse co-ordinator / STAND</p> <p>Police Drugs intelligence officer</p> <p>Police drugs intelligence officer / SMAT</p> <p>Police Drugs intelligence Officer / SMAT</p> <p>BCBC / STAND Group</p> <p>South Wales DIP Regional Management Board.</p>	<p>Monthly & Annual Review 31st March 2006/2007/2008 Measure</p> <ol style="list-style-type: none"> 1. 5% reduction over 3years 2. Reduction of 55 over 3 years 3. Number of reported incidents/persons arrested 4. Number of seizers/quantities Number of dealers arrested/convicted 5. Numbers of information received Number of seizures/arrests as a result of information 6. Numbers of disposals 7. Increase by 50% number of prosecutions/cautions 8. As Outline within the regional implementation Plan
--------------------------------	--	--	---