

**BRIDGEND COUNTY BOROUGH COUNCIL**  
 Street Scene  
 Communities Directorate

**LOUISE FRADD**  
 CORPORATE DIRECTOR  
 COMMUNITIES

Civic Offices  
 Angel Street  
 Bridgend CF31 4WB  
 Telephone (01656) 643643

**Bridgend County Borough Council**

**Parking Standards**

# Map 17

**KEY**

- Bridgend County Borough Boundary
- Zone 2
- Zone 3
- Zone 4
- Zone 5

Scale 1 : 12,000

Date 19/01/2010

This map is intended for use as a guide only and does not constitute a contract. The Council is not liable for any loss or damage arising from its use. The map is based on data provided by the Ordnance Survey and other sources. The Council is not responsible for any errors or omissions. The map is subject to change without notice. © 2010 Bridgend County Borough Council. All rights reserved.



**BRIDGEND COUNTY BOROUGH COUNCIL**  
Street Scene  
Communities Directorate

**LOUISE FRADD**  
**CORPORATE DIRECTOR**  
**COMMUNITIES**  
  
Civic Offices  
Angel Street  
Bridgend CF31 4WB  
Telephone (01656) 643643

**Bridgend County Borough Council**  
**Parking Standards**

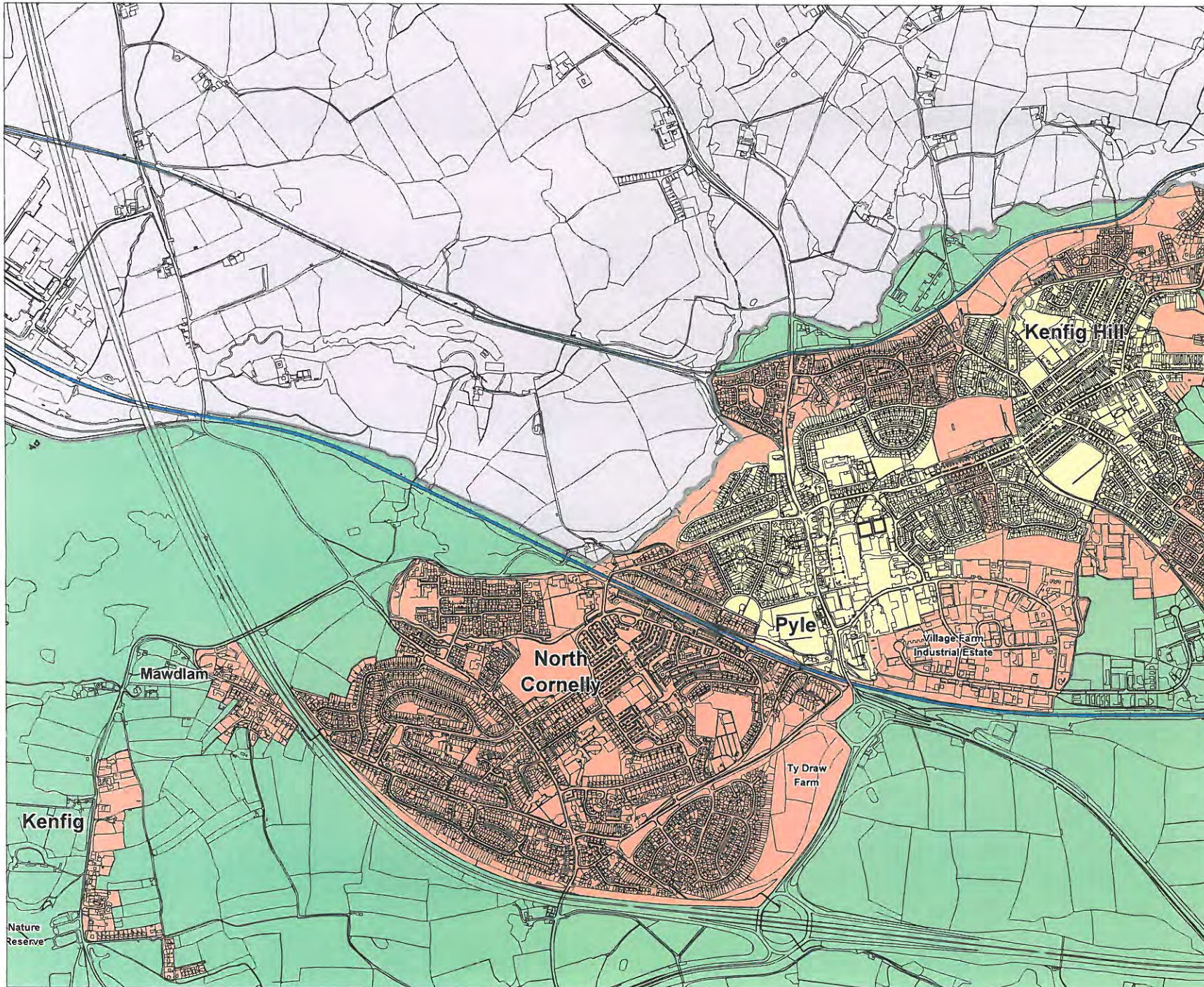
# Map 18

**KEY**

Bridgend County Borough Boundary	
Zone 2	
Zone 3	
Zone 4	
Zone 5	

**Scale 1 : 12,000**  
**Date 19/01/2010**

This map is reproduced from a copyright Ordnance Survey map which is a reproduction of the original map. It is reproduced here for the purposes of the Bridgend County Borough Council's website. It is not intended to be used for any other purpose. The map is reproduced here for the purposes of the Bridgend County Borough Council's website. It is not intended to be used for any other purpose. The map is reproduced here for the purposes of the Bridgend County Borough Council's website. It is not intended to be used for any other purpose.



**BRIDGEND COUNTY BOROUGH COUNCIL**  
Street Scene Communities Directorate

**LOUISE FRADD**  
CORPORATE DIRECTOR COMMUNITIES  
Civic Offices  
Angel Street  
Bridgend CF31 4WB  
Telephone (01656) 643643

**Bridgend County Borough Council**  
**Parking Standards**

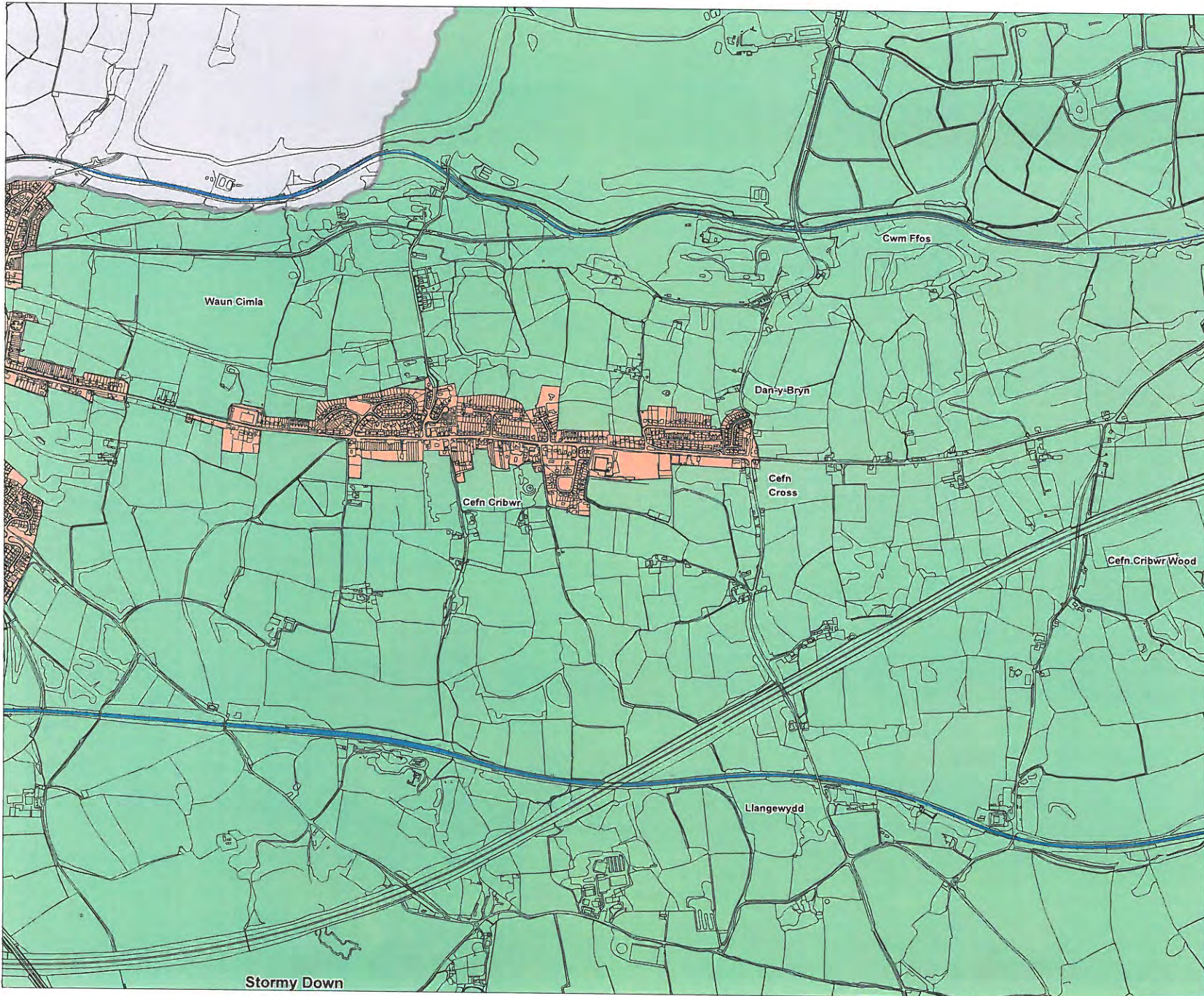
# Map 19

**KEY**

Bridgend County Borough Boundary	
Zone 2	
Zone 3	
Zone 4	
Zone 5	

**Scale 1 : 12,000**  
**Date 19/01/2010**

This map is copyright of Bridgend County Borough Council. It is a reproduction of the original map and is not to be used for any other purpose without the written permission of Bridgend County Borough Council. The Council is not responsible for any errors or omissions. The Council is not responsible for any damage or loss of any kind arising from the use of this map. Bridgend County Borough Council, The Council House, The Square, Bridgend, Ceredigion, SA31 1YU. All Rights Reserved. Copyright © Bridgend County Borough Council 2010.



**BRIDGEND COUNTY BOROUGH COUNCIL**  
Street Scene  
Communities Directorate

**LOUISE FRADD**  
CORPORATE DIRECTOR  
COMMUNITIES  
  
Civic Offices  
Angel Street  
Bridgend CF31 4WB  
Telephone (01656) 643643

**Bridgend County Borough Council**  
**Parking Standards**

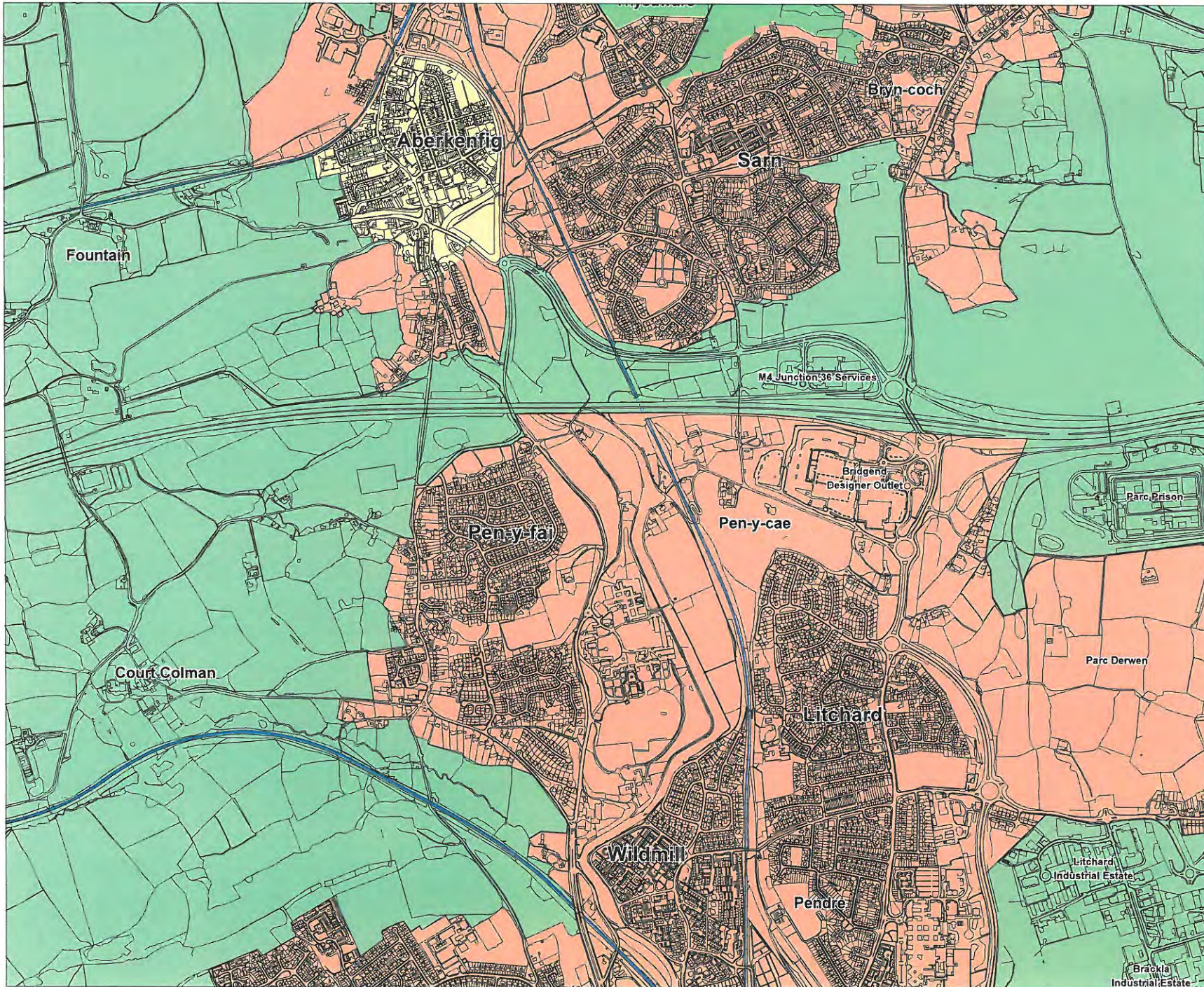
# Map 20

**KEY**

- Bridgend County Borough Boundary
- Zone 2
- Zone 3
- Zone 4
- Zone 5

Scale 1 : 12,000  
Date 19/01/2010

This map is reproduced from Ordnance Survey data and is published under the Crown Copyright. All rights reserved. No part of this publication may be reproduced, stored in a retrieval system, or transmitted in any form or by any means, electronic, mechanical, photocopying, recording, or by any information storage or retrieval system, without the prior written permission of Ordnance Survey. This map is reproduced from Ordnance Survey data and is published under the Crown Copyright. All rights reserved. No part of this publication may be reproduced, stored in a retrieval system, or transmitted in any form or by any means, electronic, mechanical, photocopying, recording, or by any information storage or retrieval system, without the prior written permission of Ordnance Survey.



**BRIDGEND COUNTY BOROUGH COUNCIL**  
Street Scene  
Communities Directorate

**LOUISE FRADD**  
CORPORATE DIRECTOR  
COMMUNITIES  
Civic Offices  
Angel Street  
Bridgend CF31 4WB  
Telephone (01656) 643643

**Bridgend County Borough Council**

**Parking Standards**

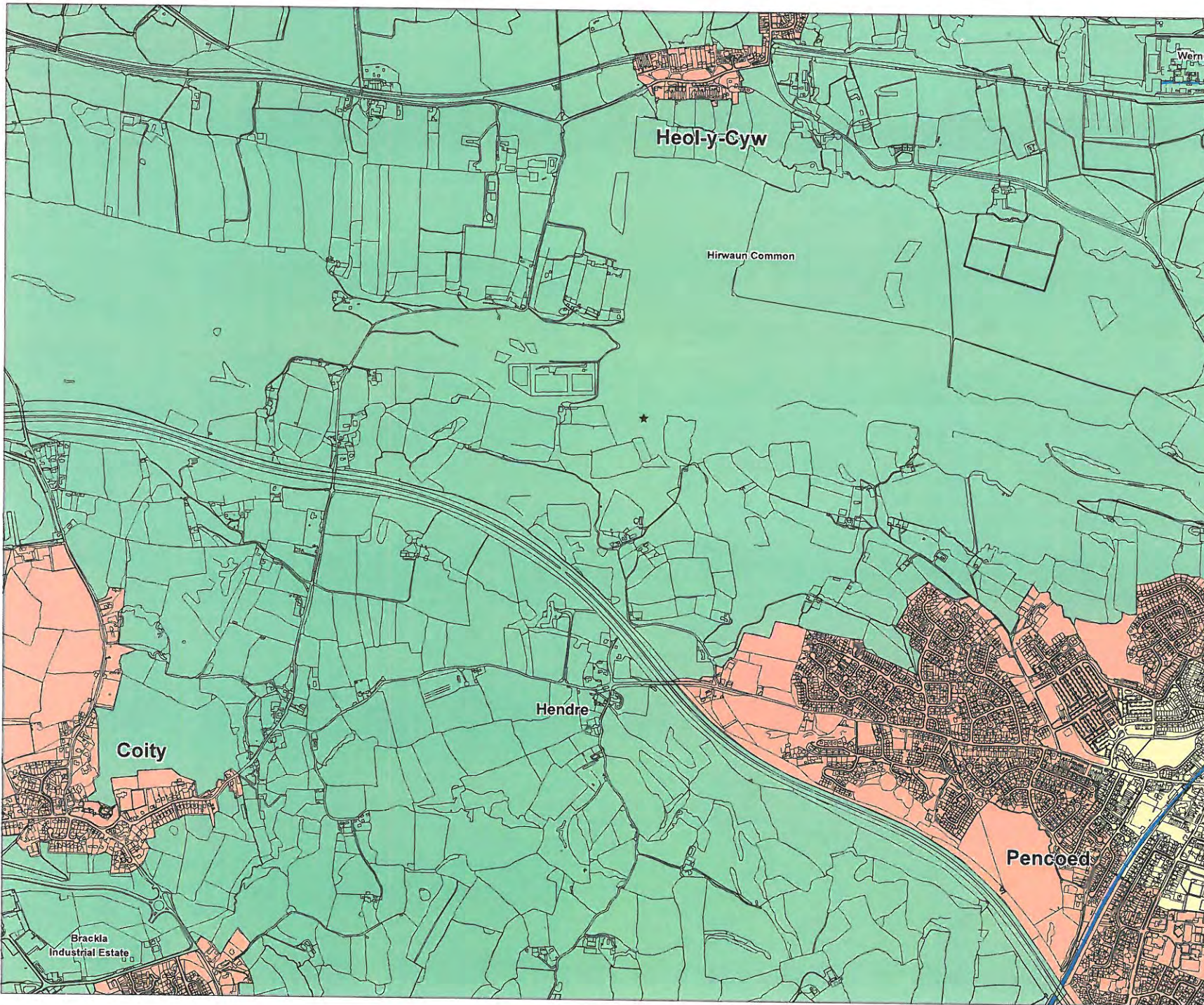
# Map 21

**KEY**

Bridgend County Borough Boundary	
Zone 2	
Zone 3	
Zone 4	
Zone 5	

**Scale 1 : 12,000**  
**Date 19/01/2010**

This map is reproduced from the Bridgend County Borough Council's Strategic Planning and Development Department. It is a copyright work of the Council and is reproduced here for the purpose of providing information to the public. It is not to be used for any other purpose without the permission of the Council. The Council is not responsible for any errors or omissions. The Council is not responsible for any loss or damage caused by the use of this map. The Council is not responsible for any loss or damage caused by the use of this map. The Council is not responsible for any loss or damage caused by the use of this map.



**BRIDGEND COUNTY BOROUGH COUNCIL**  
Street Scene  
Communities Directorate

**LOUISE FRADD**  
CORPORATE DIRECTOR  
COMMUNITIES  
  
Civic Offices  
Angel Street  
Bridgend CF31 4WB  
Telephone (01656) 643643

**Bridgend County Borough Council**  
  
**Parking Standards**

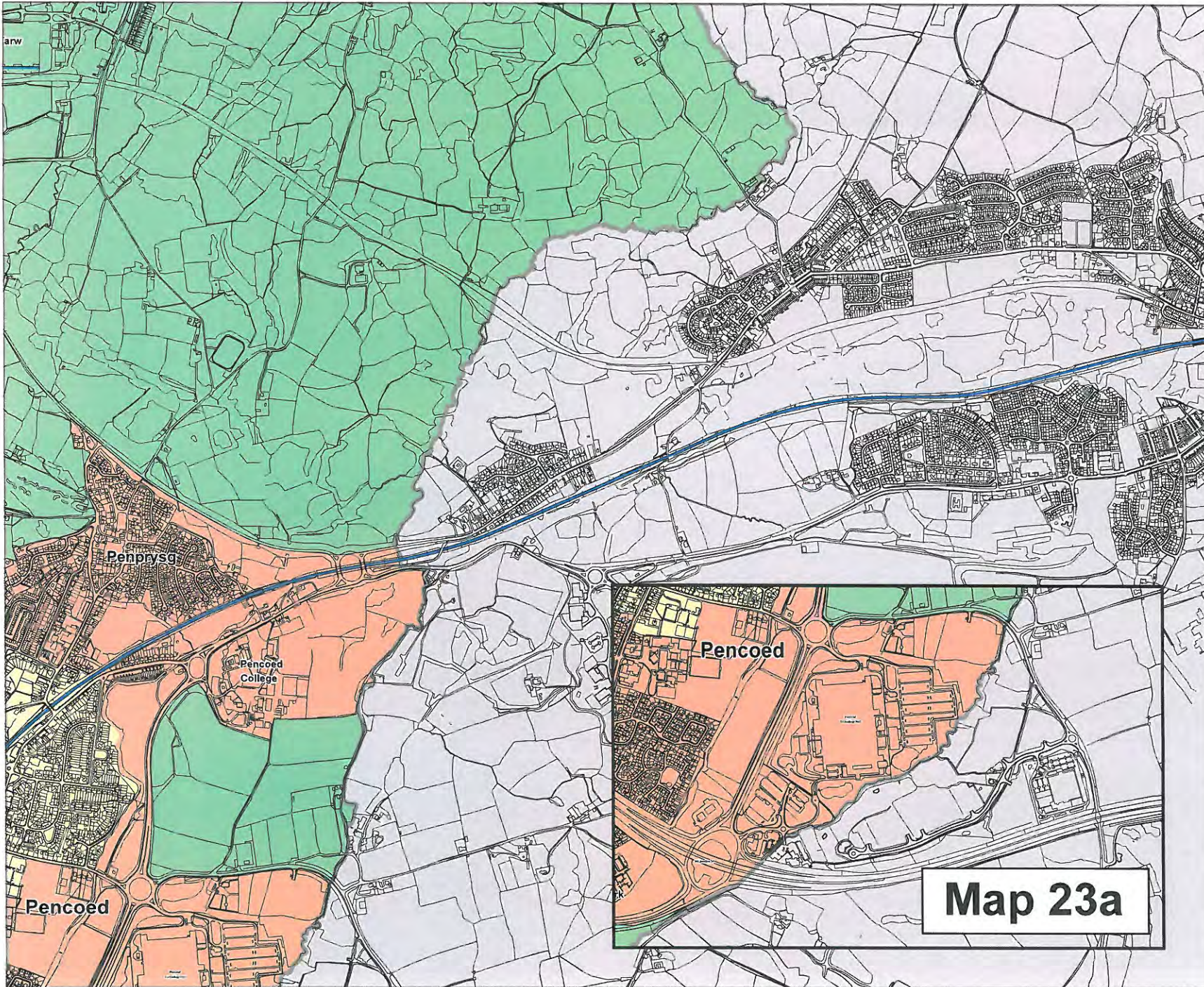
# Map 22

**KEY**

Bridgend County Borough Boundary	
Zone 2	
Zone 3	
Zone 4	
Zone 5	

**Scale 1 : 12,000**  
**Date 19/01/2010**

This map is reproduced from a copyright work. It is provided with the permission of the copyright owner. It is not to be used for any other purpose without the prior written consent of the copyright owner. All rights reserved. © Bridgend County Borough Council 2010.



**BRIDGEND COUNTY  
BOROUGH COUNCIL**  
Street Scene  
Communities Directorate

**LOUISE FRADD  
CORPORATE DIRECTOR  
COMMUNITIES**  
Civic Offices  
Angel Street  
Bridgend CF31 4WB  
Telephone (01656) 643643

**Bridgend County  
Borough Council**  
Parking Standards

# Map 23

**KEY**

Bridgend County Borough Boundary	
Zone 2	
Zone 3	
Zone 4	
Zone 5	

Scale 1 : 12,000  
Date 19/01/2010

**Map 23a**

This map is reproduced from the Bridgend County Borough Council's Strategic Planning and Development Department. It is the property of Bridgend County Borough Council and is not to be reproduced without the Council's permission. © Bridgend County Borough Council 2010. All rights reserved.



**BRIDGEND COUNTY BOROUGH COUNCIL**  
 Street Scene  
 Communities Directorate

**LOUISE FRADD**  
 CORPORATE DIRECTOR  
 COMMUNITIES  
 Civic Offices  
 Angel Street  
 Bridgend CF31 4WB  
 Telephone (01656) 643643

**Bridgend County Borough Council**  
**Parking Standards**

# Map 24

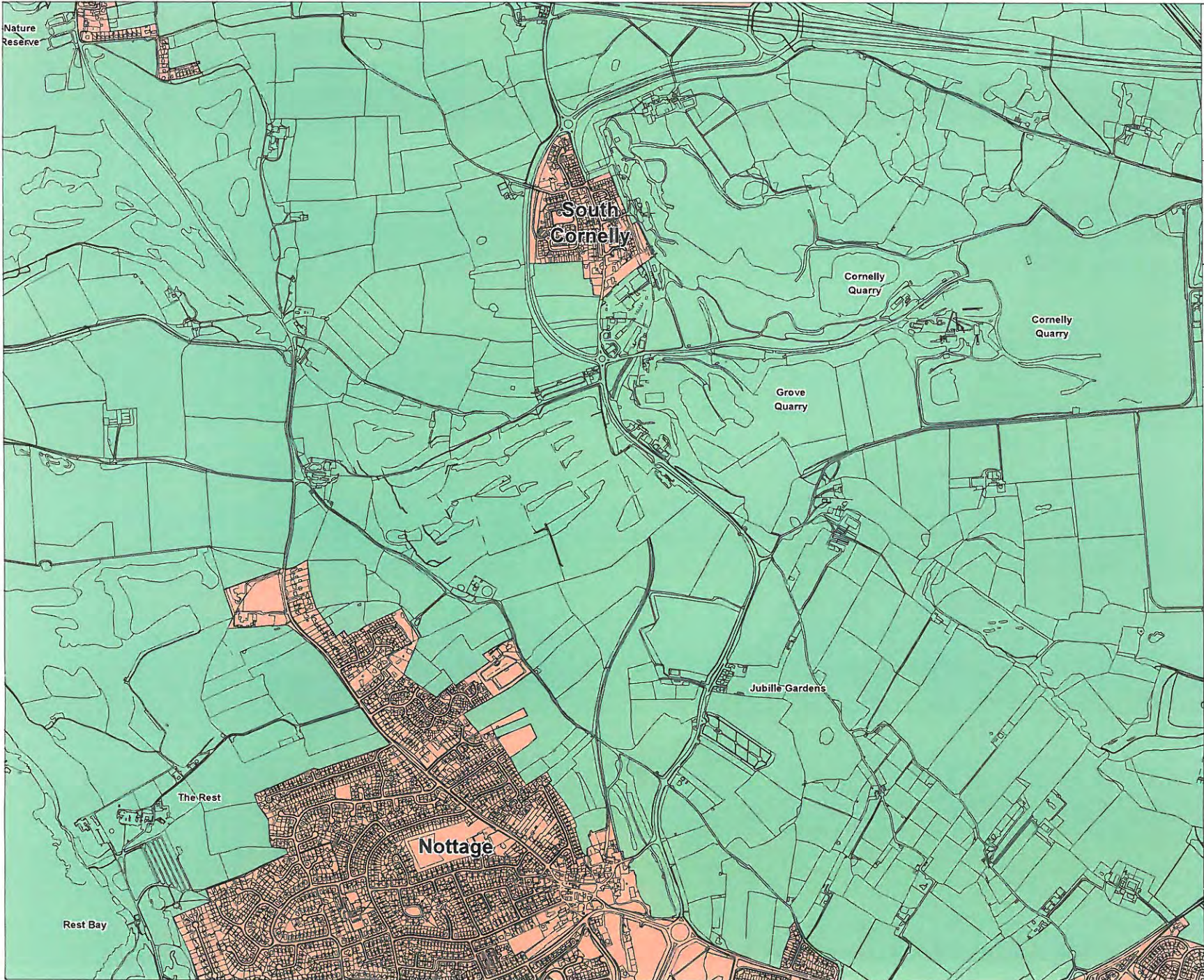
**KEY**

Bridgend County Borough Boundary	
Zone 2	
Zone 3	
Zone 4	
Zone 5	

**Scale 1 : 12,000**  
**Date 19/01/2010**

This map is prepared and published by Bridgend County Borough Council. It is not to be used for any other purpose without the written consent of the Council. The Council is not responsible for any errors or omissions. The Council is not responsible for any loss or damage arising from the use of this map. All rights reserved. © Bridgend County Borough Council 2010.





**BRIDGEND COUNTY BOROUGH COUNCIL**

Street Scene Communities Directorate

**LOUISE FRADD  
CORPORATE DIRECTOR  
COMMUNITIES**

Civic Offices  
Angel Street  
Bridgend CF31 4WB  
Telephone (01656) 643643

**Bridgend County Borough Council**

**Parking Standards**

# Map 25

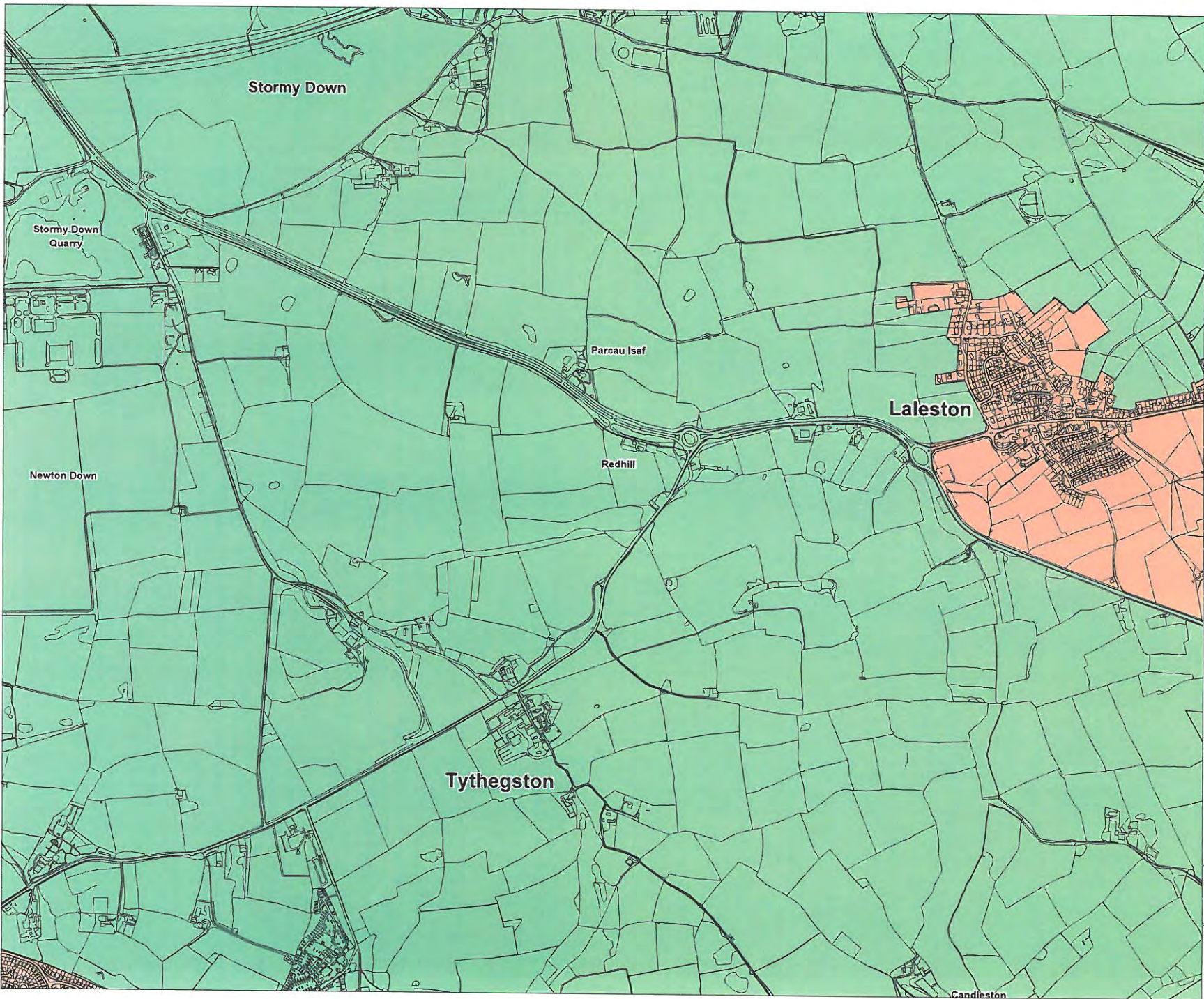
**KEY**

- Bridgend County Borough Boundary
- Zone 2
- Zone 3
- Zone 4
- Zone 5

Scale 1 : 12,000

Date 19/01/2010

This map is prepared from data supplied to the Council by the Ordnance Survey and other sources. The Council is not responsible for any errors or omissions. The Council is not liable for any loss or damage arising from the use of this map. © Bridgend County Borough Council 2010.



**BRIDGEND COUNTY BOROUGH COUNCIL**  
Street Scene  
Communities Directorate

**LOUISE FRADD**  
CORPORATE DIRECTOR  
COMMUNITIES  
Civic Offices  
Angel Street  
Bridgend CF31 4WB  
Telephone (01656) 643643

**Bridgend County Borough Council**  
Parking Standards

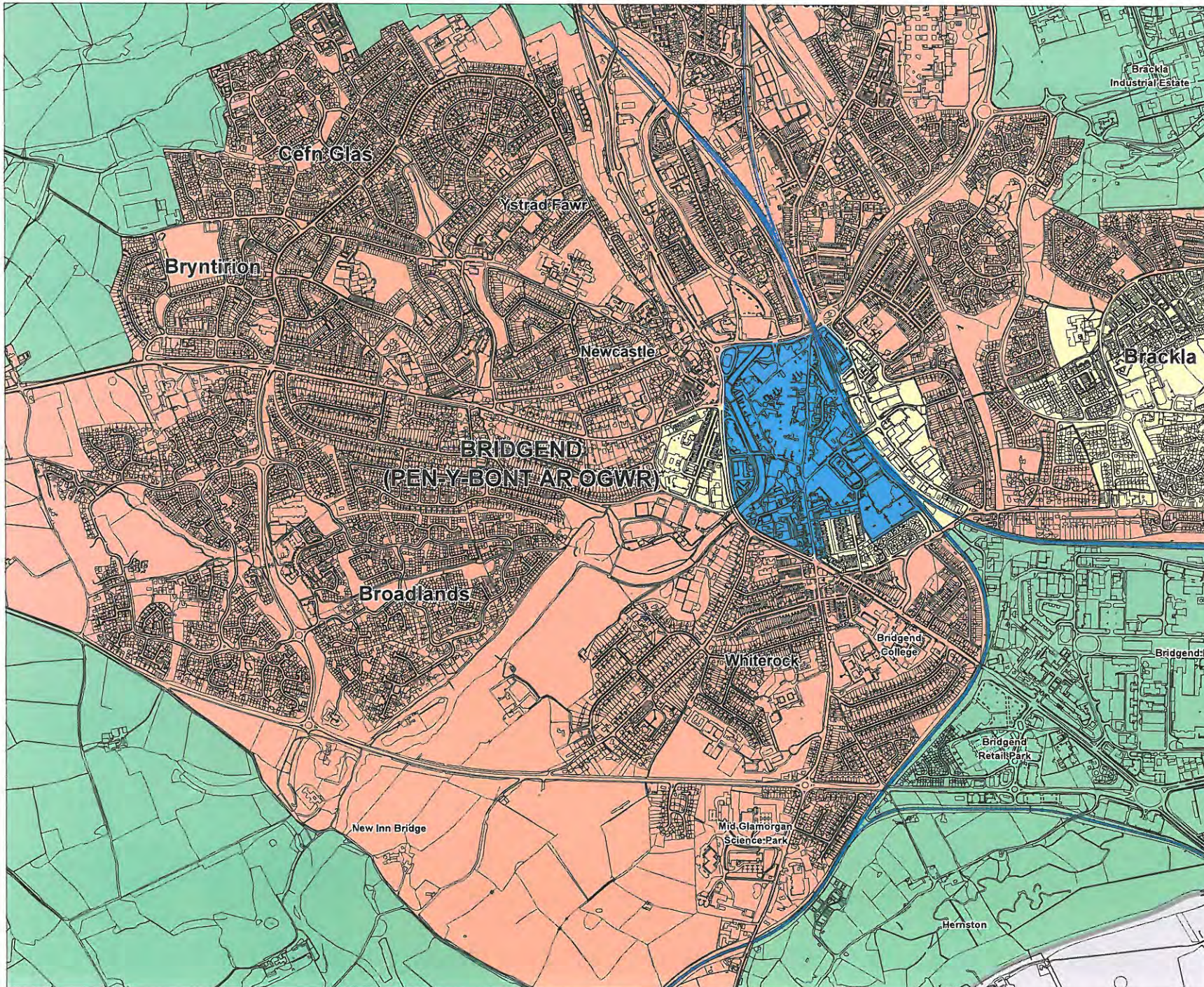
# Map 26

**KEY**

- Bridgend County Borough Boundary
- Zone 2
- Zone 3
- Zone 4
- Zone 5

**Scale 1 : 12,000**  
**Date 19/01/2010**

This map is a technical drawing and should not be used for any purpose other than that for which it was prepared. It is the responsibility of the user to ensure that the map is used in accordance with the intended purpose. The map is a technical drawing and should not be used for any purpose other than that for which it was prepared. It is the responsibility of the user to ensure that the map is used in accordance with the intended purpose.



**BRIDGEND COUNTY BOROUGH COUNCIL**  
Street Scene Communities Directorate

**LOUISE FRADD**  
CORPORATE DIRECTOR COMMUNITIES  
Civic Offices  
Angel Street  
Bridgend CF31 4WB  
Telephone (01656) 643643

**Bridgend County Borough Council**  
**Parking Standards**

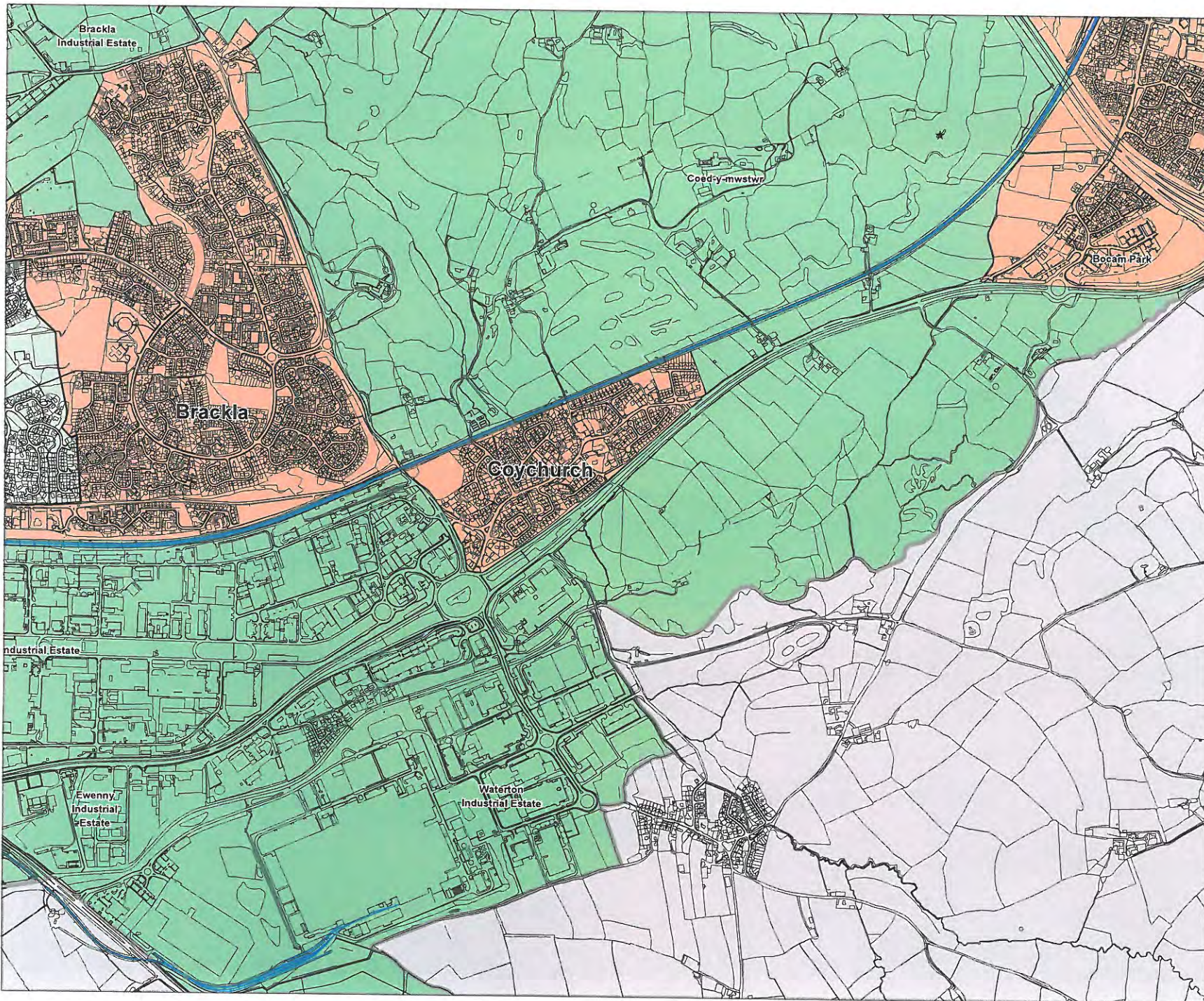
# Map 27

**KEY**

Bridgend County Borough Boundary	
Zone 2	
Zone 3	
Zone 4	
Zone 5	

**Scale 1 : 12,000**  
**Date 19/01/2010**

This map is copyright material. It is reproduced with the permission of the Council. It is not to be used for any other purpose without the written consent of the Council. It is not to be used for any other purpose without the written consent of the Council. It is not to be used for any other purpose without the written consent of the Council.



**BRIDGEND COUNTY BOROUGH COUNCIL**  
Street Scene  
Communities Directorate

**LOUISE FRADD**  
CORPORATE DIRECTOR  
COMMUNITIES  
Civic Offices  
Angel Street  
Bridgend CF31 4WB  
Telephone (01656) 643643

**Bridgend County Borough Council**  
**Parking Standards**

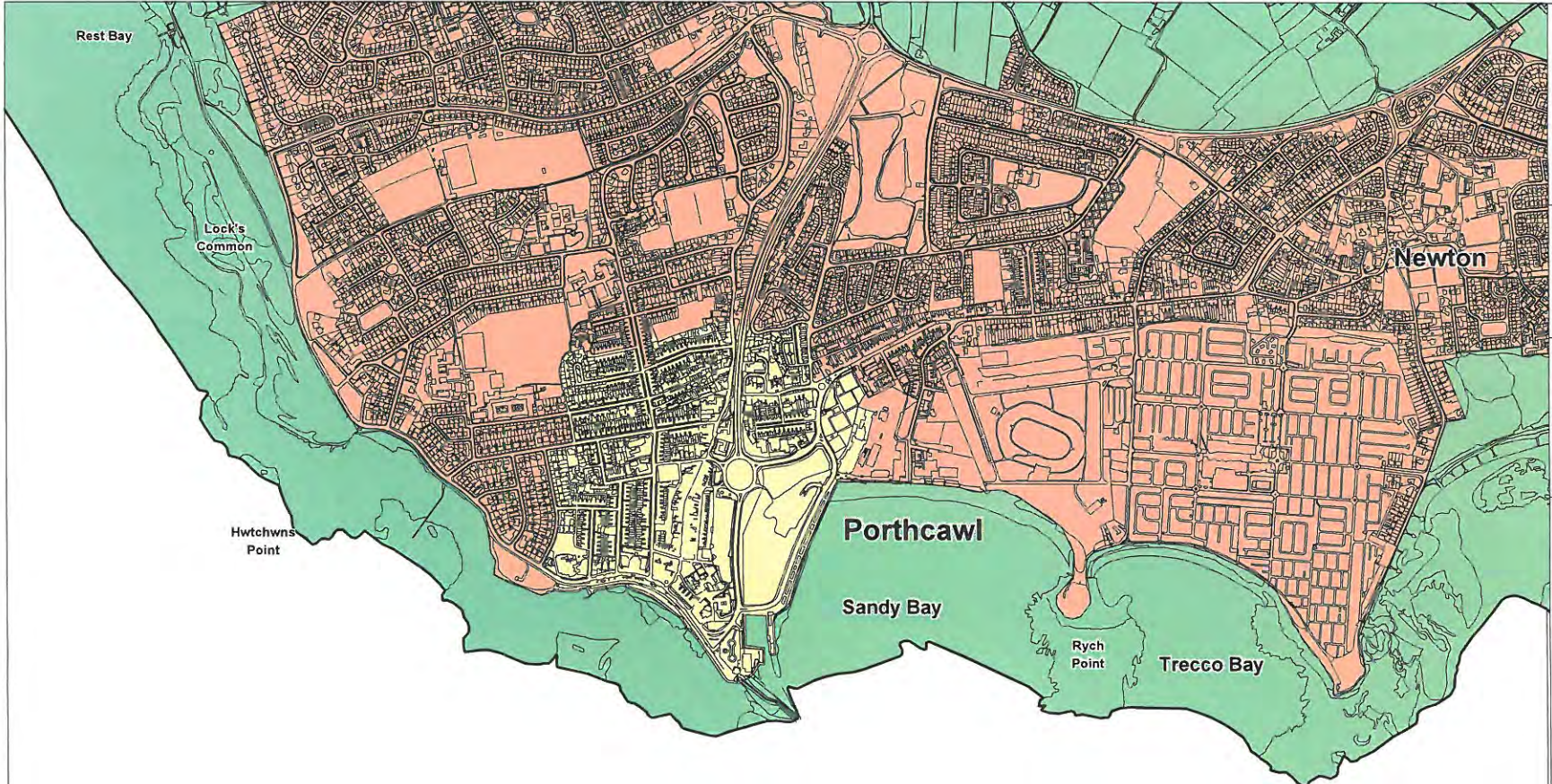
# Map 28

**KEY**

Bridgend County Borough Boundary	
Zone 2	
Zone 3	
Zone 4	
Zone 5	

**Scale 1 : 12,000**  
**Date 19/01/2010**

This map is intended for general use only. It is not intended for use in any other context. The Council is not responsible for any loss or damage arising from the use of this map. The map is published under the terms of the Ordnance Survey Licence. © Crown Copyright. All Rights Reserved. Ordnance Survey Licence No. 100011111.



**BRIDGEND COUNTY BOROUGH COUNCIL**  
Street Scene Communities Directorate

**LOUISE FRADD**  
CORPORATE DIRECTOR  
COMMUNITIES  
Civic Offices  
Angel Street  
Bridgend CF31 4WB  
Telephone (01656) 643643

**Bridgend County Borough Council**  
**Parking Standards**

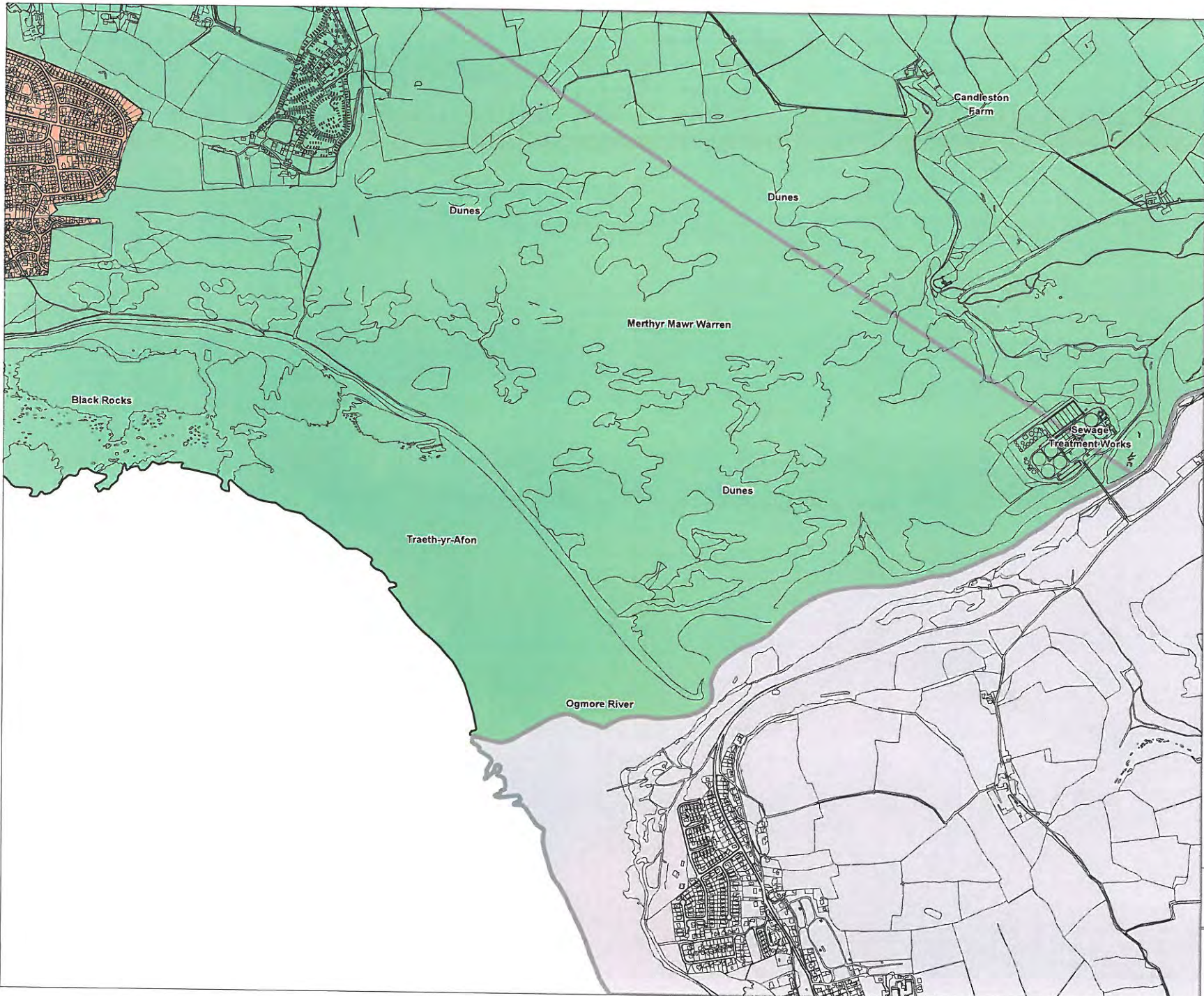
# Map 29

**KEY**

Bridgend County Borough Boundary	
Zone 2	
Zone 3	
Zone 4	
Zone 5	

**Scale 1 : 12,000**  
**Date 19/01/2010**

This map is reproduced from information supplied by the Bridgend County Borough Council. It is not intended to be used for navigation. The Council is not responsible for any errors or omissions. The Council is not responsible for any loss or damage arising from the use of this map. © Bridgend County Borough Council 2010. All rights reserved. Printed on 100% recycled paper.



**BRIDGEND COUNTY BOROUGH COUNCIL**

Street Scene  
Communities Directorate

**LOUISE FRADD  
CORPORATE DIRECTOR  
COMMUNITIES**

Civic Offices  
Angel Street  
Bridgend CF31 4WB  
Telephone (01656) 643643

**Bridgend County Borough Council**

**Parking Standards**

# Map 30

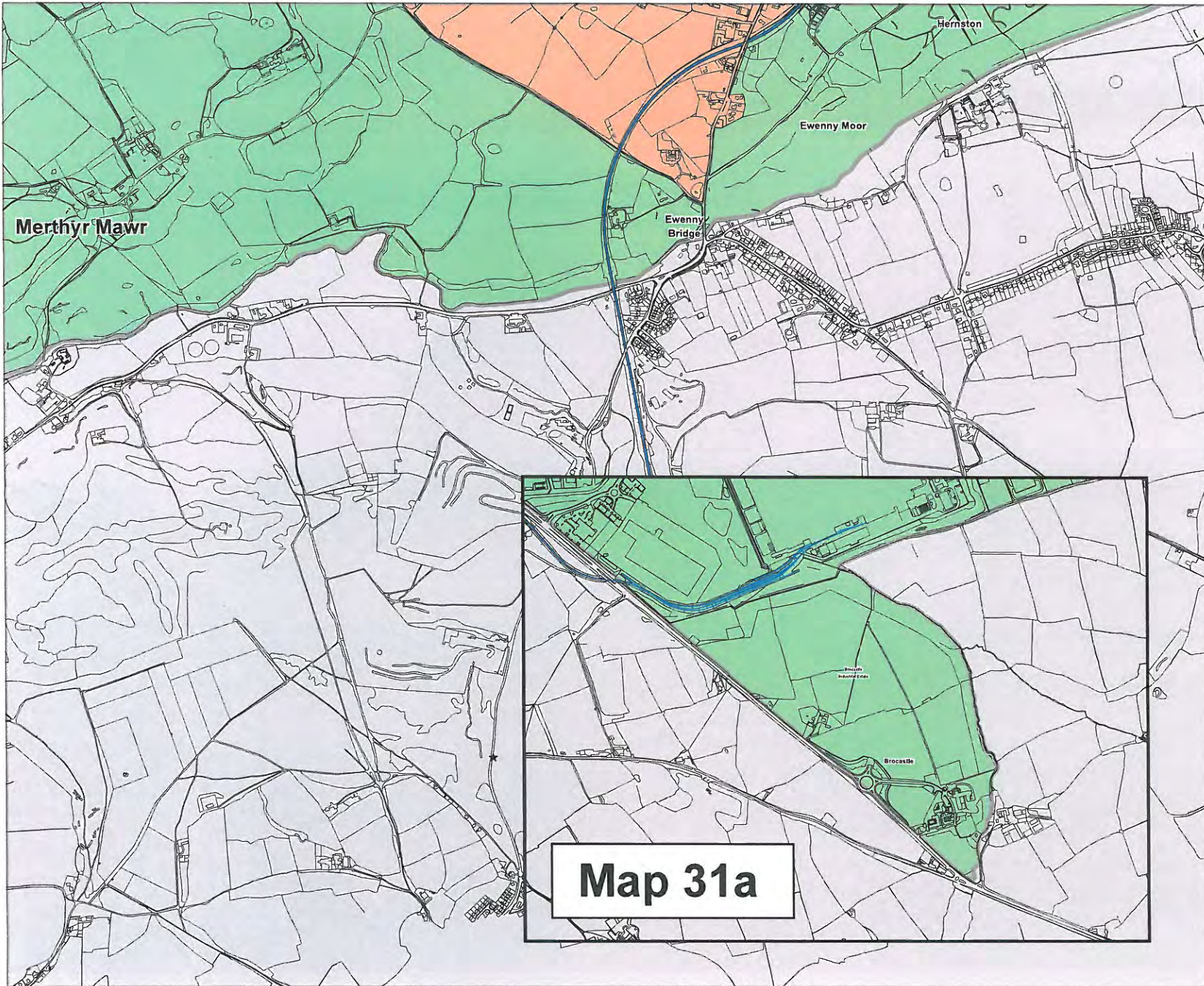
**KEY**

- Bridgend County Borough Boundary
- Zone 2
- Zone 3
- Zone 4
- Zone 5

Scale 1 : 12,000

Date 19/01/2010

This map is reproduced from a published document and is the property of Bridgend County Borough Council. It is not to be used for any other purpose without the written consent of the Council. The map is reproduced from the Bridgend County Borough Council's Planning Department. The map is reproduced from the Bridgend County Borough Council's Planning Department. The map is reproduced from the Bridgend County Borough Council's Planning Department.



**BRIDGEND COUNTY BOROUGH COUNCIL**  
Street Scene Communities Directorate

**LOUISE FRADD**  
CORPORATE DIRECTOR COMMUNITIES  
Civic Offices  
Angel Street  
Bridgend CF31 4WB  
Telephone (01656) 643643

**Bridgend County Borough Council**  
Parking Standards

# Map 31

**KEY**

Bridgend County Borough Boundary	
Zone 2	
Zone 3	
Zone 4	
Zone 5	

Scale 1 : 12,000  
Date 19/01/2010

**Map 31a**

This map is intended for use as a guide only and does not constitute a contract. The Council is not responsible for any loss or damage arising from its use. All rights reserved. © Bridgend County Borough Council 2010.