

Bridgend County Borough Council

Designation of Special Landscape Areas

March 2010



TACP

BRIDGEND COUNTY BOROUGH COUNCIL

DESIGNATION OF SPECIAL LANDSCAPE AREAS

MARCH 2010

TACP
10 Park Grove
Cardiff
CF10 3BN

Project No: 8279

Revision No.	Date of Revision	Checked by	Date	Approved by	Date
0	22.12.09	CD	22.12.09	LJ	22.12.09
1	08.01.10	CD	20.01.10	LJ	20.01.10
2	15.03.10	CD	15.03.10	LJ	16.03.10
3	25.03.10	CD	25.03.10	LJ	25.03.10
4 - photos	04.05.10	CD	04.05.10	LJ	04.05.10

Contents

1.0	Introduction	1
2.0	Study Context	2
3.0	Special Landscape Area Designation - Bridgend	5
	SLA 1: Foel y Dyffryn	9
	SLA 2: Northern Uplands.....	13
	SLA 3: Western Uplands	17
	SLA 4: Bryngarw Country Park	21
	SLA 5: Mynydd y Gaer	25
	SLA 6: Kenfig Burrows	29
	SLA 7: Laleston.....	33
	SLA 8: Porthcawl Coast.....	37
	SLA 9: Merthyr-mawr Warren	41
4.0	Conclusions	45
Appendix A – List of Figures		
Appendix B – Sub criteria for Aspect Topic Layers		
Appendix C– Schedule and Plan of Landscape Conservation Areas and the Strategic Coalfield Plateau		

1.0 Introduction

- 1.1** TACP Consultants were appointed in October 2009 by Bridgend County Borough Council (see Appendix A, Figure 1.0) to carry out a review of Special Landscape Areas (SLAs) designation within their administrative area. This exercise was to utilise the Special Landscape Area Designation Criteria originally developed for the South East Wales Local Authority Consortium, and now included within the Countryside Council for Wales Guidance Note 1 (June 2008). This methodology utilises the comprehensive data set associated within the LANDMAP Information System landscape assessment methodology.
- 1.2** The study has reviewed the whole of the County Borough Council area. The current Unitary Development Plan (UDP) identifies two forms of protected landscape (Policy ENV10) namely those “special landscapes” within the Borough, identified as:-
- (i) The strategic coalfield plateau and its associated valley sides.
 - (ii) Landscape Conservation Areas (LCAs) (see Appendix C).
- 1.3** Since then the revised landscape assessment has been undertaken using the LANDMAP methodology developed by the Countryside Council for Wales (CCW) and it was recognised for the purposes of the LDP that it was likely that the LCAs would have to be reviewed in the light of this new assessment.
- 1.4** The Special Landscape Area Study has highlighted nine areas which qualify under the revised methodology as candidate SLAs. The detailed boundaries will be confirmed by the County Borough Council as they take into account any other plan or policy developments within the emerging Local Development Plan process.

2.0 Study Context

- 2.1** The use of non-statutory designations such as Special Landscape Areas to protect areas of landscape value has long been a policy tool within the UK planning system. They have been seen by local planning authorities as a means of protecting sensitive landscapes and in developing an understanding and awareness of those features and characteristics that give a locality its sense of place.
- 2.2** Bridgend County Borough Council covers an area of some 255 square kilometres. The County Borough extends about 20 kilometres from east to west, encompassing the Ogmore, Garw and Llynfi valleys to the north and bordering the Bristol Channel to the south. The largest settlements are Bridgend, Maesteg and the seaside town of Porthcawl. The Borough is traversed by the M4 motorway, A48 trunk road and the Swansea-Paddington railway line. In terms of landscape, a dominant feature is the small valleys and associated uplands that form part of the former South Wales Coalfield. The settlement pattern and land use reflects the typical ribbon type associated with this area. Further south the landscape opens out into a fairly broad limestone plateau and runs down to the coast with a mixture of active sand systems (Kenfig), coastal beaches and rocky headlands. An interesting feature of the area is that many of the valley heads are “blind” and do not continue through the coalfield plateau, unlike the majority of valleys in the region.
- 2.3** As noted previously, the SLAs identified within Bridgend relate to the Strategic Coalfield Plateau and its associated valley sides and Landscape Character Area. The extent of the former is based upon the findings of the South Wales Renewable Energy Landscape Assessment and Design Guidelines (1994). The latter were designated largely in the former Ogwr Borough Local Plan and were based upon the findings of a systematic landscape survey which took into account each area’s intrinsic landscape character. In developing the UDP these areas were re-examined taking into account the findings of more recent studies including the Landscapes Working for Bridgend County Borough, the Countryside Strategy (2002) Integrated Action Plan (2002) and Local Biodiversity Action Plan.
- 2.4** Since this original exercise was carried out, a new methodology of landscape assessment has been developed and adopted throughout Wales (see Planning Policy Wales (2002) - Section 5.3.13) known as the LANDMAP Information System. This divides the landscape into component elements known as aspect topic layers which are of equal importance and are assessed in terms of their characteristics and value against a standard set of criteria. The aspect topic layers are as follows:-

- Geological Landscapes
- Landscape Habitats
- Visual and Sensory Landscapes
- Historic Landscapes
- Cultural Landscapes

For each of these aspect topic layers, discrete geographical units known as aspect areas are identified and mapped and a data set is developed that includes a description classification and evaluation of quality. In addition other, non-evaluated data sets are developed including a Form and Function layer (ie: landscape type and use) together with the carrying out of a Public Perception Study. This latter exercise brings together the findings from focus group and questionnaire exercises.

2.5 In parallel with this change in landscape assessment, the requirements for local authority development plans have also changed. Under the Planning and Compensation Act 2004, the existing Unitary Development Plan system has been replaced by Local Development Plan (LDPs). To assist authorities in the production of the new LDP's a Companion Guide (2006) to Planning Policy Wales has been published. This recognises the need for authorities to have regard to the value of designated SLAs. In response to this the South East Wales Local Authority Consortium commissioned TACP Consultants¹ to develop a methodology for the designation of SLAs using the LANDMAP Information System. This methodology forms the bases of a Countryside Council for Wales guidance note (Note 1: LANDMAP and Special Landscape Areas – June 2008) on the designation of Special Landscape Areas in Wales. It also reflects the guidance within Planning Policy Wales (2002) of which Section 5.3.11 states "...Non Statutory designations such as Special Landscape Areas.... Should be based upon a formal scientific assessment of the landscape value of the site ... Local Planning Authorities should only apply these designations where there is good reason to believe that normal planning policies cannot provide the necessary level of protection." This guidance continues in Section 5.3.13 "CCW's LANDMAP Information System methodology is an important resource on which local authorities can draw".

2.6 In reviewing the SLA designation reference has also been made to the approach and designations identified by adjacent authorities. This is particularly relevant in considering the "coherence" strategic issue which is an integral element to the guidance methodology. The situation is as follows:-

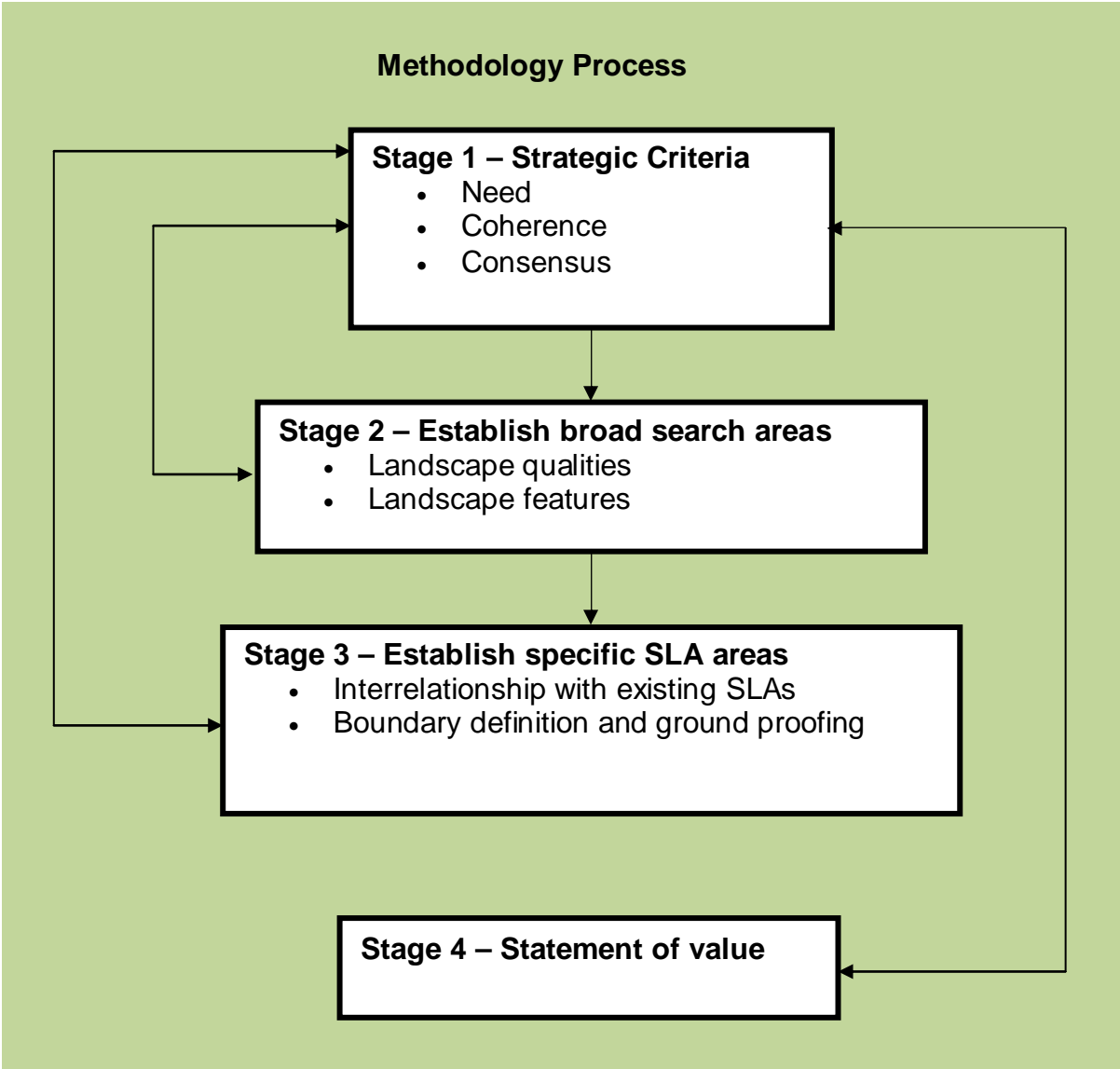
- **Neath Port Talbot** - do not currently have a specific SLA policy and consequently no specified areas. It is understood that as part of the LDP process the Council will review the validity of their current policy, which is essentially to protect the landscape in its own right in light of WAG policy in the PPW Companion Guide.

¹ Development of Criteria for Special Landscape Area Designation for South East Wales Local Authorities (Caerphilly County Borough Council host authority) June 2007).

- **Vale of Glamorgan** - have recently (2009) completed a review of SLAs within their area following the CCW Guidance Methodology.
- **Rhondda Cynon Taf** – have undertaken a review of SLA designations using an amended version of the CCW Guidance to greater reflect the visual qualities and characteristics of the landscape.

3.0 Special Landscape Area Designation - Bridgend

3.1 The methodology uses a structured, iterative approach to the identification of areas considered worthy of designation as a Special Landscape Area. The process is illustrated in Figure 2.0 below:-



3.2 Stage 1 - Review of Strategic Criteria

In carrying out this process in Bridgend, a series of discussions have been held with the client at the identified hold points. The Stage 1 meeting was held on 20th October 2009 with the core client team. The results of the meeting were as follows:-

Strategic Criteria		Response
1.	<i>Need</i> – to what extent will designation be more effective in safeguarding, managing or providing for the special attributes of the area.	The officers agreed that the existing SLAs were of use for development control purposes, providing an extra layer of policy protection in terms of ensuring development quality. Further discussion ensued in respect of their value for landscape management policy development.
2.	<i>Coherence</i> – ensure that areas considered for designation make it practical to develop policies for its protection, management or promotion.	All agreed that to be of use and value the SLAs should be of a sufficient size to justify their designation so as to ensure a practical application.
3.	<i>Consensus</i> - agreement and sufficient support for designation, and must include all stakeholders including community as well as professional groups.	All agreed value of protection designation given the value attached to existing SLAs (defined as Landscape Conservation Areas (LCA) within the existing (UDP). Agreed that settlement boundaries be excluded from any SLA designations.
Conclusions and Recommendation		
There are currently a number of LCAs within Bridgend including the Coalfield Plateau protection zone which came under a wider SLA concept. The value of SLAs particularly to the development control process was recognised. It was agreed to continue to the next stage of development, the identification of “Broad Search Areas”.		

3.3 Stage 2 - Establish Broad Search Areas

The broad search areas were established from a desk review and analysis of the LANDMAP Information System data. In line with the methodology guidance this took the form of an iterative process, adding and reviewing aspect topic layers to establish where clustering of Outstanding and High evaluation levels occurred (see Appendix, Figure 3.0). The boundaries identified (see Figure 4.0) cover a broader appreciation of the area and allow for revision of the candidate SLAs later on in the process. The guidance methodology does not specify the number of outstanding and high aspect areas required for the designation of a SLA. It is apparent that the greater the number, the stronger the rationale for designation will be. Conversely, the fewer the number, the more clearly the designation has to be justified. This is where reference to the three strategic criteria – Need, Consensus and

Coherence – has to be made and the professional judgement of the assessor is important.

The six broad search areas are as follows:-

Area 1: Foel y Dyffryn

A small area bounding Neath Port Talbot. Important areas for Landscape Habitats (LH001-High), Visual & Sensory (VS473-High) History (HL224-High) and Cultural Landscapes (CL056-High). Of the remainder, five areas are Moderate, two low.

Area 2: Northern Uplands

Area comprising thirty three aspect areas including the Upper Ogmere Valley and eastern flank of the Garw Valley of which Geological Landscape GL027 is Outstanding HL582 - Outstanding. Ten are High (LH007, LH008, LH017, LH019, VS496, VS622 HL215 and CL056). Fifteen are Moderate, two Low

Area 3: Western Uplands

Area comprising twenty two aspect areas with the Cultural Landscape of Llangynwyd CL020 being Outstanding as is HL242. Five are of High evaluation, ten are Moderate, three are Low

Area 4: Bryngarw Country Park

An area predominantly consisting of a Registered Historic Park. Aspects with High evaluations are CL047, CL056, HL114 and LH009. Seven areas are Moderate, one Low.

Area 5: Mynydd y Gaer

An upland area with seven of the twenty two aspect areas High, ten Moderate, two Low.

Area 6: Southwest Coastal Region

A large area at the south west coast including fifty five aspect areas. The area contains several SSSIs, National and Local Nature Reserves and a Special Areas of Conservation. Outstanding evaluations are for GL045, GL046, GL047, LH027, LH034, LH042, HL231, HL685, HL654, HL413, CL001, CL003, CL006, CL013 AND CL015. There are High evaluations for sixteen aspect areas, thirteen Moderate, seven Low.

The findings of this exercise were reported to the client team at a meeting held on 17th November 2009. From the discussions at the meeting there was an agreement to proceed and to establish candidate SLAs for consideration by the Council.

3.4 Stage 3 - Establish the Specific Areas

The primary function of this stage is to review the broad search areas and establish clear, defensible boundaries for the SLAs. This was undertaken through a combination of desk survey supported by fieldwork. The key issues arising from this stage of the exercise relate to the coherence and consensus strategic objectives. This is reflected in the following.

Area 1: Foel y Dyffryn

Boundary to extend to the settlement edge.

Area 2: Northern Uplands

Follow settlement boundary and extend up to the local authority boundary with Rhonda Cynon Taff for reasons of coherence.

Area 3: Western Uplands

Boundary to follow the A4063 to the east, unitary authority boundary to the west and roads north and south.

Area 4: Bryngarw Country Park

Boundary extended to include Brynmenyn area of High evaluation for Landscape Habitat in the south west. Three aspect layer evaluations justify its inclusion but existing designations may be considered sufficient for its protection. The historic and cultural aspects evaluations extend the boundary slightly into the park's rural setting.

Area 5: Mynydd y Gaer

To include upland topography using dismantled railways as north and south boundaries.

Area 6: Kenfig Burrows

Exclude Porthcawl and Newton, and associated urban fringe. There are four quite separate landscape types within BSA 6 that would benefit from subdivision, creating a further three SLAs. One would extend up the Ogmere Valley to the Merthyr-mawr bridge, from which point the landscape is markedly different and slightly degraded. Other designations may give sufficient protection to two of the four identified areas.

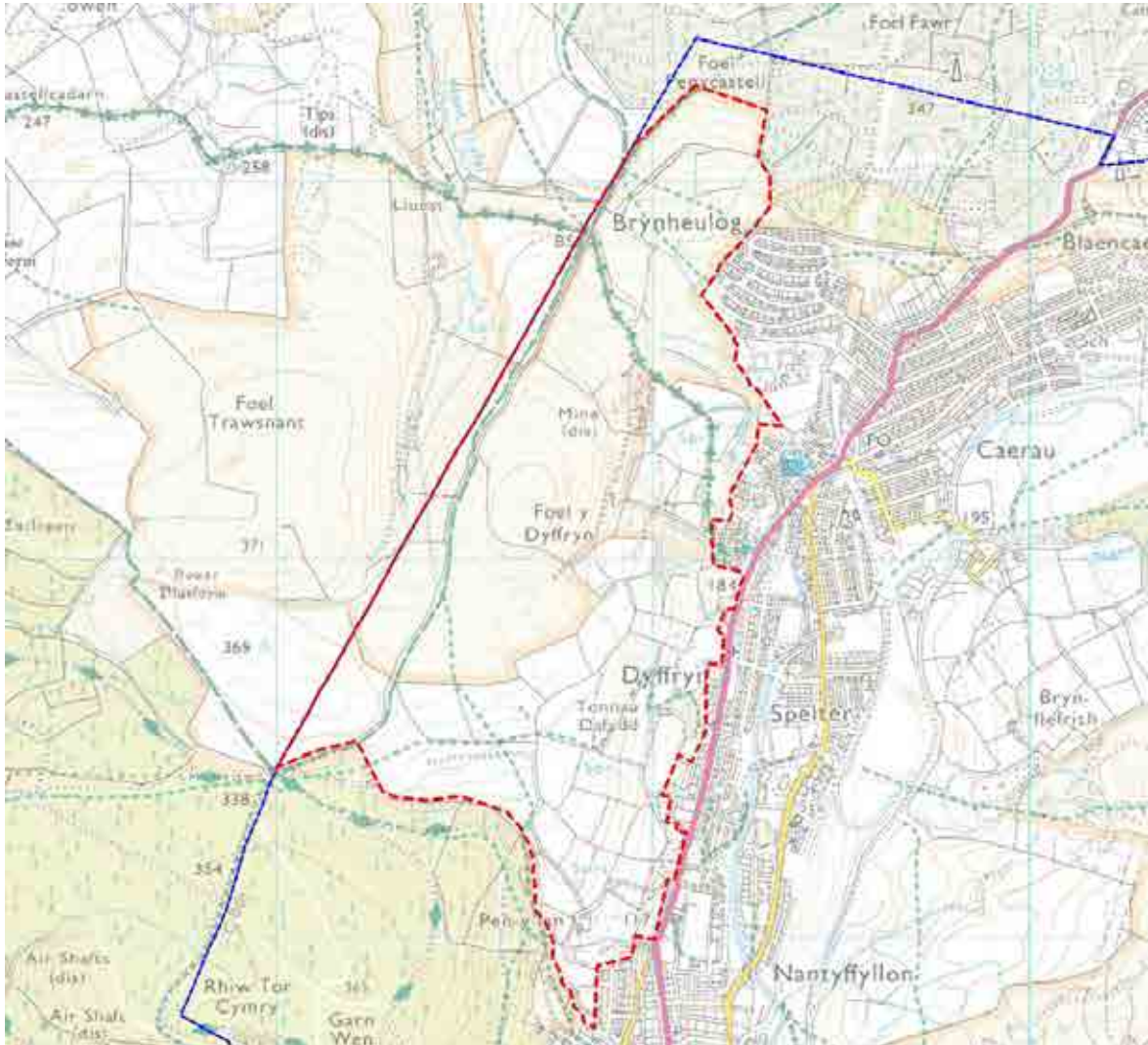
3.5 Stage 4 – Statement of Value

The Statement of Value sets out the key qualities of the individual SLAs. Under the methodology the final boundaries will be determined by the local authority, however, within the statement are the justifications for the identification of an area as a SLA. The areas recommended for designation (see Figure 5.0) are:-

SLA 1	Foel y Dyffryn
SLA 2	Northern Uplands
SLA 3	Western Uplands
SLA 4	Bryngarw Country Park
SLA 5	Mynydd y Gaer
SLA 6	Kenfig Burrows
SLA 7	Laleston
SLA 8	Porthcawl Coast
SLA 9	Merthyr-mawr Warren

SLA 1: Foel y Dyffryn

LOCATION PLAN



PHOTOGRAPHS



Foel y Dyffryn from housing estate at Brynheulog

Relevance Against Strategic Criteria

Need - A relatively small area of upland landscape west of Dyffryn and Caerau. It provides an important visual backdrop to the setting of the urban area. Habitats include blanket bog and wet heath, some of which are of International significance/Priority.

Coherence - It forms a distinctive, upland landscape backdrop to the urban development and provides a distinct sense of place.

Consensus - It has never been identified as a potential SLA in previous exercises, however the professional stakeholders recognised the underlying qualities and value of the area. Forms distinct landscape unit.

Primary Landscape Qualities and Features

A relatively small area of distinctive upland landscape to the west of Dyffryn and Caerau it provides a visual backdrop to the setting of the urban area along the valley floor. Generally north-east facing, the uplands range from 120m to 350 AOD. Its upland qualities and character are further reinforced by borrowed views to the Brecon Beacons to the north.

Its vegetation cover is typically rough grassland, mainly upland heath, interspersed with wetland and boggy areas which are local Biodiversity Action Plan target habitats. It also includes populations of marsh fritillary butterfly.

The proximity to the urban edge of its eastern boundaries introduces visual and sensory detractors and is typified by a range of urban fringe management issues – fly tipping, illegal biking, conflict with landowners and farmers.

Key Policy and Management Issues

- Management of Biodiversity Action Plan habitats
- Maintenance of distinctive landscape element – broadleaf woodland
- Limit urban development up slopes
- Urban fringe degradation

Boundary Justification

Indicative boundary follows the Bridgend local authority boundary to the west, forestry edge to north, the urban edge to the east and Garn Wen woodland edge to the south.

Cross Reference to LANDMAP Information System

The validation of the SLA designation has been made against a consideration of the sub-criteria used to produce the evaluation levels for each of the five evaluations aspect area topics. These are shown on the evaluation matrix.

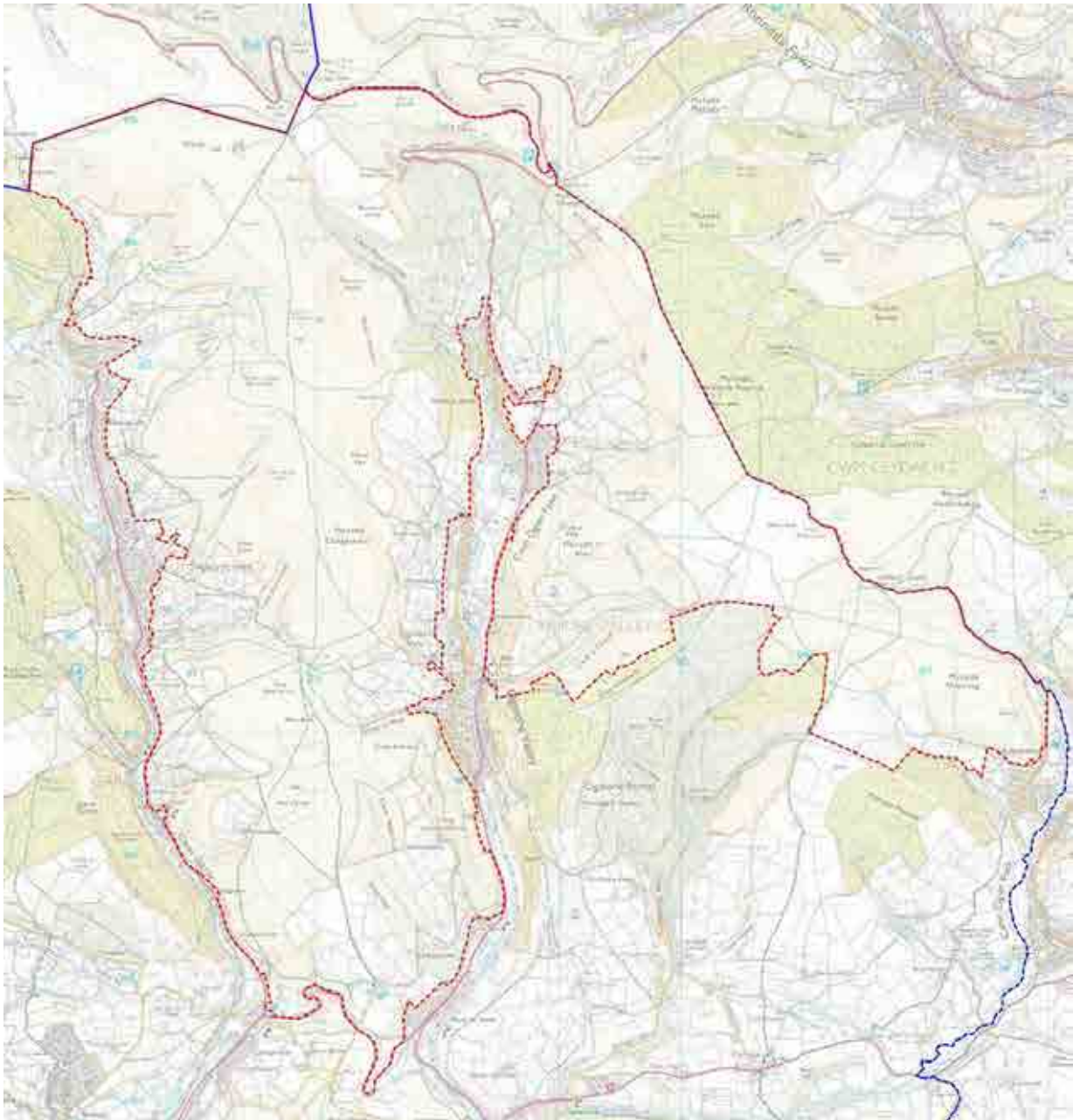
The sub criteria for each aspect topic layer are as listed in Appendix B.

SLA 1 Foel y Dyffryn

	Aspect Area	Area Name	Evaluation Criteria									Overall Evaluation
			1	2	3	4	5	6	7	8	9	
Geological Landscapes	GL035	Llynfi Valley	M	M	M	L						Moderate
Landscape Habitats	LH001		H	H	L	H	M	H	H	M		High
	LH003		M	M	M	M	M	H	M	M		Moderate
Historic Landscapes	HL227	Llangynwyd	O	O	M	H	O					Outstanding
	HL242	Maesteg	H	H	H	H	O					Outstanding
Visual & Sensory	VS473	Mynydd Baedan	H	H	M	M						High
Cultural Landscapes	CL023	Llynfi Garw & Ogmore Valleys	M	H	L	U	M	M	H	L	U	Moderate
	CL056	Designated Landscape Areas	H	H	L	L	O	H	L	H	U	High

SLA 2: Northern Uplands

LOCATION PLAN



PHOTOGRAPHS



Ogmore Valley to the southwest, from Ogmore Vale fire station



Ogmore Valley looking south from A4061/Aber Road

Relevance Against Strategic Criteria

Need - An open upland ridge landscape, largely intact but with urban, wind farm and forestry influences starting to degrade its integrity.

The area surrounds Ogmore Valley, although excludes the Ogmore Forest to the south – includes Mynydd Llangeinwyr and Mynydd Maes-teg which are of regional value in terms of the Visual and Sensory aspect topic layer.

Coherence - The eastern part of the SLA includes land up to the local authority boundary with Rhondda Cynon Taff. It relates closely to a similar designated area in Rhondda Cynon Taff.

Consensus – Part identified as Landscape Conservation Area in previous exercises, however the professional stakeholders recognised its underlying qualities and value of the area as identified within the Landmap criteria subject to the coherence needs identified above.

Primary Landscape Qualities and Features

An open upland ridge landscape lying between approximately 250m and 550m AOD. The western half of the SLA consists of unenclosed uplands with easterly (in Ogmore Valley) and westerly (in Garw Valley) facing slopes of relatively narrow valleys, with boundaries of urban/rural interface on lower valley slopes. The Upper Ogmore Valley exhibits the classic characteristics of glaciation, namely a U-shaped valley which is interspersed with minor truncated spurs and small hanging side valleys. The busy A4064 that follows the river course along the Afon Garw floor is a slight visual and sensory detractor due to noise and movement of traffic. Panoramic and sometimes dramatic views over upland and adjoining valleys.

The eastern half of the SLA has steep westerly facing slopes of the quite narrow valley (Ogmore), with views across the urban area (Ogmore Vale, Pricetown) on the valley floor with which it has an urban/rural interface. Attractive upland views within and out over Ogmore Vale and to other upland areas that survive largely intact and unaffected by modern afforestation. Wind noise is a dominant aesthetic factor which evokes particular experience of exposure and wildness. Some visual clutter of pylons slightly detracts from this otherwise wild/exposed typical upland area with a strong sense of place. Not remote as close to valleys and their associated urban areas.

Predominant land cover of rough grazing and bracken, rock outcrops to the east and with some old stone walls. With acid grassland, heath and internationally important blanket bog habitats and including Cwm Cyffog SSSI. Lower Ogmore Valley includes some patchy broadleaved woodland and at Ogmore Vale the Aber Woods

Ancient Woodland SINC, whilst the northern end of the SLA includes the conifer plantations, including Cwm Nant-y-moel and the area around Nant-y-moel itself.

Key Policy and Management Issues

- Control stock grazing and visual intrusion of incongruous vertical elements
- Introduce schemes such as Tir Gofal
- Control spread of modern forestry plantation, seek to influence longer term management plan
- Urban edge issues
- Management of Aber Woods

Boundary Justification

The boundaries identified use the local authority boundary to the north and east, urban edge to the west and the A4093 and forestry edge to the south. The detailed boundaries will be confirmed by the County Borough Council.

Cross Reference to LANDMAP Information System

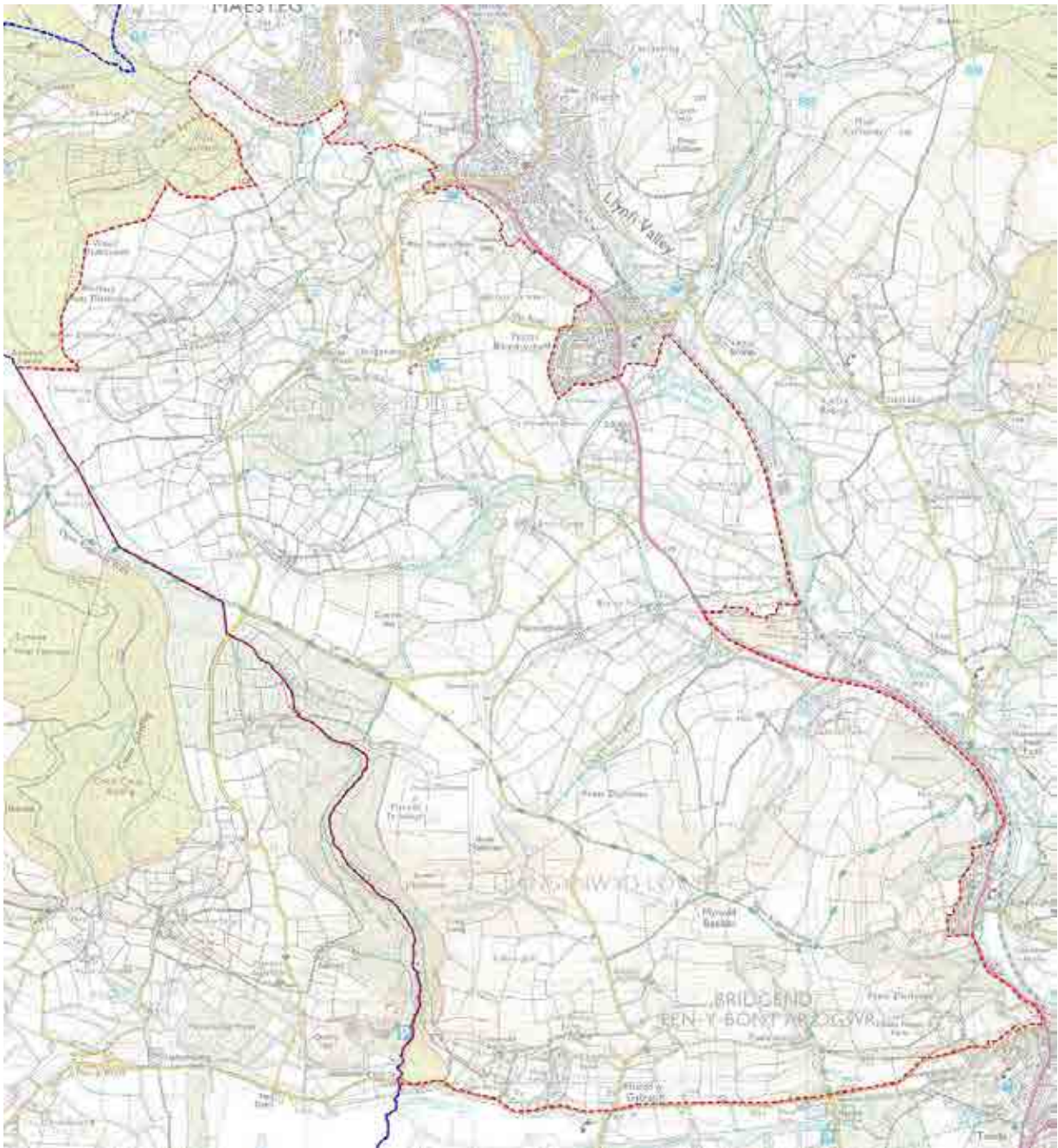
The validation of the SLA designations has been made against the criteria used to produce the evaluation level for each of the five evaluated aspect area topics. These are shown on the evaluation matrix.

The sub criteria for each aspect topic layer are as listed in Appendix B.

SLA 2 Upper Ogmore Valley												
	Aspect Area	Area Name	Evaluation Criteria									Overall Evaluation
			1	2	3	4	5	6	7	8	9	
Geological Landscapes	GL027	Upper Rhondda Fawr	O	O	O	O						Outstanding
	GL033	U Ogwr Fawr Valley	H	M	M	H						High
	GL034	U Garw Valley	H	M	M	H						High
	GL036	U Garw Fach	L	L	L	L						Moderate
	GL037	Mid Ogwr Fawr	L	L	L	L						Moderate
	GL038	L Garw Valley	L	L	L	L						Moderate
Landscape Habitats	LH006		M	M	M	M	M	M	M	M		Moderate
	LH007		H	H	U	M	M	M	H	M		High
	LH008		H	H	M	M	M	H	H	M		High
	LH014		L	L	M	L	L	L	M	U		Moderate
	LH017		H	M	M	M	M	H	H	U		High
	LH019		H	M	M	M	M	H	H	M		High
	LH090		L	L	M	L	M	U	L	M		Low
Historic Landscapes	HL215	Unenclosed Uplands	O	O	M	M	O					Outstanding
	HL346	Cwm Garw	H	H	M	M	H					High
	HL382	Cwm Ogwr Fawr	M	M	M	L	M					Moderate
	HL582	Ogmore Valley Agricultural	O	H	M	M	O					High
	HL690	Evanstown	L	M	M	L	M					Moderate
	HL988	Ogmore Valley Agricultural 2	H	H	M	M	H					High
Visual & Sensory	VS148	Cwm Ogwr	L	M	M	M						Moderate
	VS349	Mynydd Llangelwyr	M	M	M	M						Moderate
	VS357	Mynydd Ton, Bwalfa, William Meyrick	M	M	L	M						Moderate
	VS496	Mynydd Maes-teg	H	H	H	H						High
	VS550	Mynydd y Aber	M	M	M	M						Moderate
	VS622	Mynydd Llangelwyr	H	M	H	H						High
	VS813	Garw & Caerau Forest	M	M	M	M						Moderate
Cultural Landscapes	CL023	Llynfi Garw & Ogmore Valleys	M	H	L	U	M	M	H	L	U	Moderate
	CL056	Designated Landscape Areas	H	H	L	L	D	H	L	H	U	High

SLA 3: Western Uplands

LOCATION PLAN



PHOTOGRAPHS



Upland wooded valley



Cwm Nant-gwyn



Llangynwyd

Relevance Against Strategic Criteria

Need – Distinctive agricultural landscape on western flank of County Borough between Maesteg and Aberkenfig rising up to 200m AOD. An historically and culturally important landscape.

Coherence - Extensive, simple landscape block on western flank of Llynfi Valley running up to County Borough boundary.

Consensus – LANDMAP data set reflects justification for designation as a SLA. Part of area defined as Landscape Conservation Area within UDP.

Primary Landscape Qualities and Features

A fairly extensive upland area abutting Neath Port Talbot in the west. It comprises a series of north eastern facing slopes, ranging from 120m to 350m AOD, typically rough grazing. It has a number of plantations and small woodlands that contribute to the overall character and quality of the area reflected in a number of the LANDMAP aspect area evaluations – VS473 – Mynydd Baedan (High), LH009 – riparian woodland (High) part of Parc Slip (CL019) (High).

The geography of the landscape is typical of much of the area, showing evidence of glaciation – classic u-shaped valley with truncated side valleys. Despite the presence of coal measures and other stone quarrying the area retains a largely rural, agricultural character.

Important historic and cultural associations reflected in landscape archaeology including the settlement of Llangynwyd and its hinterland largely important, despite proximity of industrial towns it retains a distinct rural form and character.

The main visual detractors relate to the interface of the SLA with the southern edge of Maesteg, Pont Rhyd-y-cyff, Aberkenfig and Cwmfelin.

Key Policy and Management Issues

- Maintain broadleaf mix forestry
- Limit forestry plantations
- Limit urban development up slopes and intrusive vertical elements

Boundary Justification

The western boundary follows the local authority boundary. The northern boundary is defined by forestry and urban edge. To the east, the dismantled railway and urban edge provides a defensible boundary and the south follows a B road.

Cross Reference to LANDMAP Information System

The validation of the SLA designations has been made against the criteria used to produce the evaluation level for each of the five evaluated aspect area topics. These are shown on the evaluation matrix.

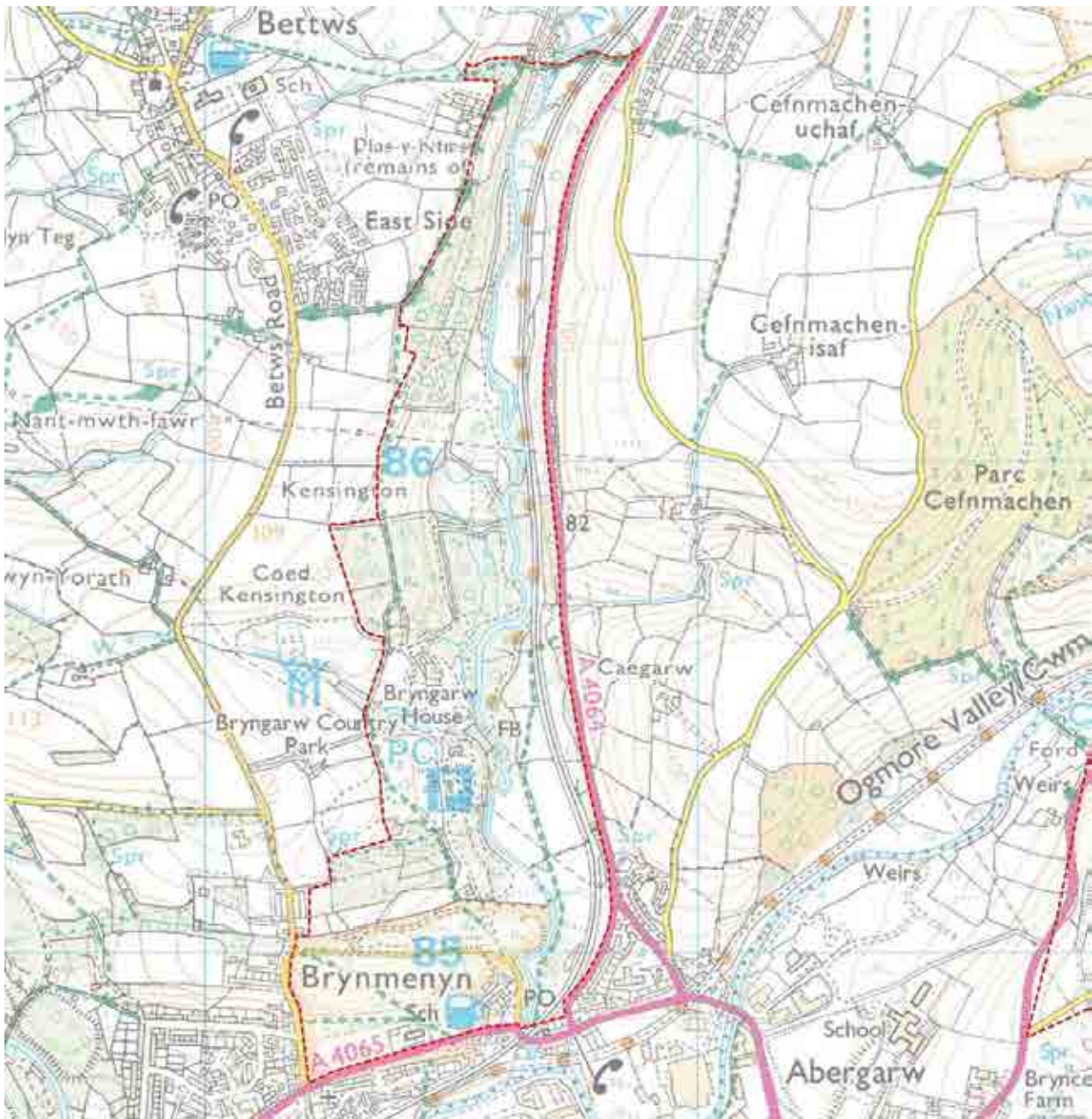
The sub criteria for each aspect topic layer are as listed in Appendix B.

SLA 3 Western Uplands

	Aspect Area	Area Name	Evaluation Criteria									Overall Evaluation
			1	2	3	4	5	6	7	8	9	
Geological Landscapes	GL039	L Llynfi Valley	M	L	L	L						Moderate
	GL041	Tondu	M	L	M	M						Moderate
Landscape Habitats	LH009		M	M	M	M	M	H	H	H		High
	LH010		M	M	M	L	L	L	M	H		Moderate
Historic Landscapes	HL227	Llangynwyd	O	O	M	H	O					Outstanding
	HL242	Maesteg	H	H	H	O	O					Outstanding
Visual & Sensory	VS473	Mynydd Baedan	H	H	M	M						High
	VS731	Conifers to west	M	M	M	L						Moderate
	VS884	Llynfi Valley	M	M	M	M						Moderate
Cultural Landscapes	CL017	Tondy Sarn et alia	L	L	L	U	L	U	L	L	U	Low
	CL019	Cefn Cribwr Parc Slip Bedford Park	L	H	L	U	M	U	U	M	U	High
	CL020	Llangynwyd	H	U	U	H	O	H	L	H	U	Outstanding
	CL023	Llynfi Garw & Ogmore Valleys	M	H	L	U	M	M	H	L	U	Moderate
	CL056	Designated Landscape Areas	H	H	L	L	O	H	L	H	U	High

SLA 4: Bryngarw Country Park

LOCATION PLAN



PHOTOGRAPHS



Bryngarw House lawns



Bryngarw House and pond



Bryngarw Country Park

Relevance Against Strategic Criteria

Need - The proposed SLA includes the Registered Historic Park of Bryngarw House and surrounding valley woodland habitat. The area is based upon the Registered Historic Park of Bryngarw House which is managed by the Council as a country park.

Coherence - A relatively small area based primarily on the Historic (aspect area HL114) and Cultural (aspect areas CL047 and CL056) landscapes relating to the historic Tudor mansion and associated gardens and woodland.

Consensus - Identified as a LCA in the Bridgend UDP, it is currently protected by its use and status within local development planning framework.

Primary Landscape Qualities and Features

A small distinct area based upon the grounds and associated woodlands of Bryngarw House. An early Tudor house this has been modified at various times and the ornamental gardens – a mixture of ponds, ornamental and natural planting were laid out between 1910 and 1918. The site is included in the Cadw/ICOMOS Register of Landscapes, Parks and Gardens of Special Historic Interest in Wales. The area is now managed as a Country Park by the County Borough Council. The proposed SLA area extends beyond the historic park boundaries to include a range of areas of high habitat value. This includes a range of riparian woodlands, some designated as a Site of Special Scientific Interest.

Key Policy and Management Issues

- Management of riparian habitats/woodlands
- Pressure of public use
- Conflict between land use/habitat/value

Boundary Justification

The boundary extends beyond the Historic Park to include areas of high habitat value. The A4064 forms a strong eastern boundary and consideration should be given to extending the SLA west to the Betws Road for a stronger boundary and to protect from development. The A4065 provides a southern boundary and the Ogwr Valley Walk provides the north and north-west boundary.

Cross Reference to LANDMAP Information System

The validation of the SLA designations has been made against the criteria used to produce the evaluation level for each of the five evaluated aspect area topics. These are shown on the evaluation matrix.

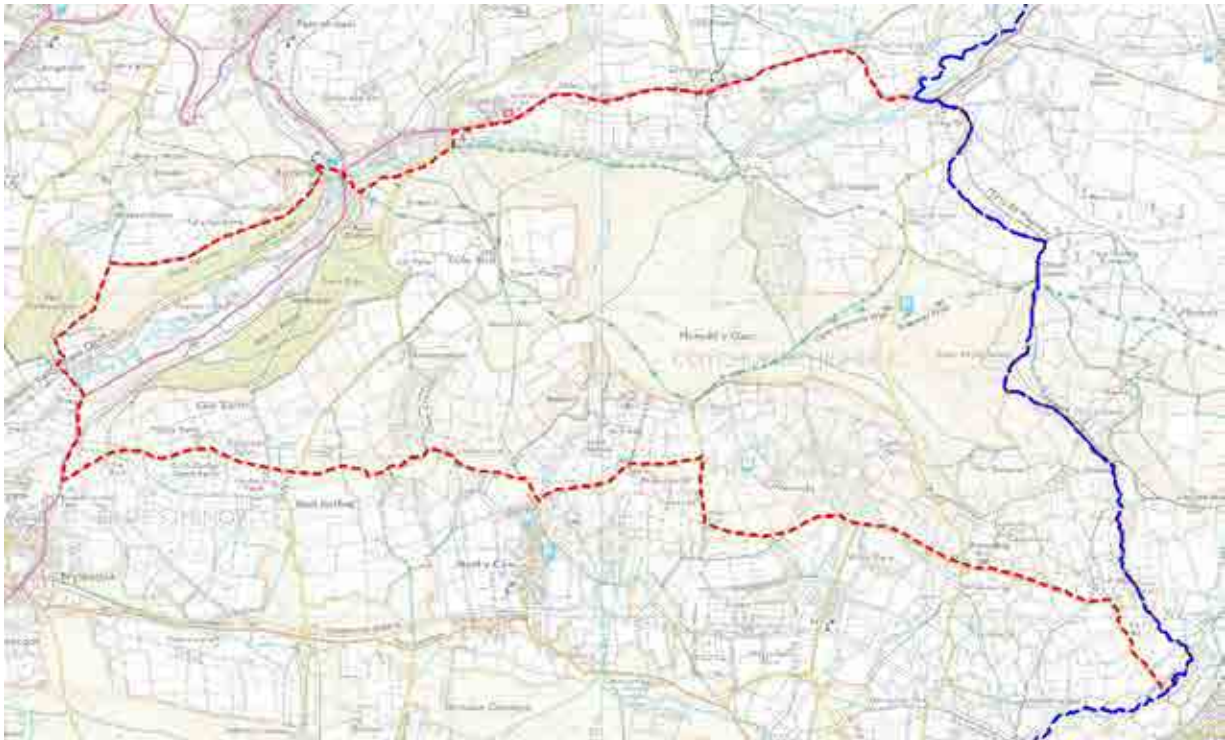
The sub criteria for each aspect topic layer are as listed in Appendix B.

SLA 4 Bryngarw Country Park

	Aspect Area	Area Name	Evaluation Criteria									Overall Evaluation	
			1	2	3	4	5	6	7	8	9		
Geological Landscapes	GL038	L Garw Valley	L	L	L	L							Moderate
Landscape Habitats	LH009		M	M	M	M	M	H	H	H			High
	LH010		M	M	M	L	L	L	M	H			Moderate
Historic Landscapes	HL114	Bryngarw	H	H	H	H	H						High
	HL242	Maesteg	H	H	H	O	O						Outstanding
	HL346	Cwm Garw	H	H	M	H	H						High
	HL581	Llynfi Valley Agricultural	H	M	M	L	H						Moderate
Visual & Sensory	VS148	Cwm Ogwr	L	M	M	M							Moderate
	VS966	Betws	M	M	M	M							Moderate
Cultural Landscapes	CL017	Tondu Sarn et alia	L	L	L	U	L	U	L	L	U		Low
	CL023	Llynfi Garw & Ogmore Valleys	M	H	L	U	M	M	H	L	U		Moderate
	CL047	Country Parks	H	H	L	U	H	H	L	H	U		High
	CL056	Designated Landscape Areas	H	M	L	L	O	H	L	H	U		High

SLA 5: Mynydd y Gaer

LOCATION PLAN



PHOTOGRAPHS



From equestrian centre looking towards Mynydd y Gaer

Relevance Against Strategic Criteria

Need – Visually a high quality landscape unit with a number of important landscape habitat areas which together establish a useful landscape area of quality.

Coherence – Distinct landscape unit on eastern boundary of Bridgend.

Consensus – Partly defined as a Landscape Conservation Area within UDP.

Primary Landscape Qualities and Features

Undulating ridge line landform running east to west up to the attractive upland landscape associated with Mynydd y Gaer some 300 metres AOD. In land use terms it includes the interface between the open uplands and the bounded fields of the lower lying agricultural landscapes. These are often defined by hedgerows with trees. The southern edge of this scarp is dissected by a series of steep sided cwms, such as Cwm Crymlyn, Cwm Llwyd and Nant Ton-y-groes.

Limited areas of woodland or small spinneys although the north western edge of the SLA includes the wooded slopes of Allt y Rhiw, which is designated a Special Area of Conservation (SAC) under the EU Natura 2000 programme, together with Coedtal-y-fan on the western side of the Ogmores Valley which runs down into the Ogmores Valley and the conifer plantations to the west of Gelli-feddgaer. Higher ground is open and exposed which is reflected in the sensory qualities of the area. Its level of exposure is reflected by the presence of the windfarm at Mynydd Hugh, which introduces a visual detractor to the area.

The SLA is traversed by the Ogwr Ridgeway Walk, as well as a range of other footpaths. Along the edge of the SLA, the A4061, B4280 and A4093 roads introduce visual and sensory detractors.

Key Policy and Management Issues

- Retention of agricultural land use and form.
- Function of designated footpaths and walls, together with Right to Roam areas introducing conflict with farmers
- Careful control of windfarm developments
- Maintenance of nature conservation and Natura 2000 designations (SACs)

Boundary Justification

The eastern boundary extends to the local authority boundary. The southern boundary extends to the area to follow the minor road. The northern boundary follows the edge of the A4093, excluding the urban area of Blackmill. The western boundary includes the valley floor of the Ogmores, including the A4061 corridor to ensure the Coedtal-y-fan woodland, designated a SAC, is included. The designated footpath of the Ogwr Ridgeway Walk has been identified as a suitable boundary. This results in areas of moderate landscape value being included, such as the A4061 road corridor but provides for a coherent western edge to the SLA by inclusion of the

designated woodland on either side of the valley that contributes to the landscape character and quality of the area.

Cross Reference to LANDMAP Information System

The validation of the SLA designations has been made against the criteria used to produce the evaluation level for each of the five evaluated aspect area topics. These are shown on the evaluation matrix.

The sub criteria for each aspect topic layer are as listed in Appendix B.

BSA 5 Mynydd y Gaer

	Aspect Area	Area Name	Evaluation Criteria									Overall Evaluation
			1	2	3	4	5	6	7	8	9	
Geological Landscapes	GL036	U Garw Fach	L	L	L	L						Moderate
	GL037	Mid Ogwr Fawr	L	L	L	L						Moderate
	GL040	Ogwr Valley	L	L	L	L						Low
	GL041	Tondu	M	L	M	M						Moderate
	GL042	Ewenny Valley	M	L	L	L						Moderate
Landscape Habitats	LH010		M	M	M	L	L	L	M	H		Moderate
	LH018		L	L	M	L	L	L	L	L		Low
	LH019		H	M	M	M	M	M	H	M		High
	LH023		U	O	L	M	L	H	O	M		High
	LH024		U	M	M	L	M	M	M	L		Moderate
	LH025		M	M	M	M	M	M	H	M		High
	LH028		H	H	M	H	H	O	H	H		High
	LH094		M	L	M	L	M	L	M	M		Moderate
Historic Landscapes	HL382	Cwm Ogwr Fawr	M	M	M	L	M					Moderate
	HL645	Mynydd y Gaer & Allt y Rhiw	O	H	M	H	O					High
	HL817	St Brides Minor to Coychurch	H	H	M	M	H					High
	HL988	Ogmore Valley Agricultural	H	H	M	M	H					High
Visual & Sensory	VS148	Cwm Ogwr	L	M	M	M						Moderate
	VS436	Mynydd Gaer	H	M	H	M						High
	VS572	Hendre	M	M	M	M						Moderate
Cultural Landscapes	CL023	Llynfi Garw & Ogmore Valleys	M	H	L	U	M	M	H	L	U	Moderate
	CL056	Designated Landscape Areas	H	H	L	L	O	H	L	H	U	High

SLA 6: Kenfig Burrows

LOCATION PLAN



PHOTOGRAPHS



Kenfig Nature Reserve coastline



Kenfig Nature Reserve looking north towards M4



Kenfig Nature Reserve looking west across Kenfig Pool



Kenfig Nature Reserve looking east

Relevance Against Strategic Criteria

Need - A distinctive landscape form within the County Borough Area, it is already subject to a range of statutory designations, including a Special Area of Conservation (Natura 2000 site), Site of Special Scientific Interest, National and Local Nature Reserve and is included on the Register of Landscapes of Outstanding Historic Interest in Wales (CCW/Cadw/ICOMOS).

Coherence - Discrete landscape unit formed by the coastal sand dune deposits and its related vegetation. It includes the intertidal zone between the low and high water.

Consensus - Requires agreement of all stakeholders, then the designation of a SLA will add value to the protection and management of the landscape given the stringent requirements associated with the SAC designation.

Primary Landscape Qualities and Features

One of a group of windblown littoral sand deposits found along the South Wales coast, Culturally it represents an important banded landscape that derived from adverse weather conditions and tidal phenomena in the Middle Ages, which had considerable impact upon local societies. Kenfig forms an extensive dune system that overlies the Upper Carboniferous Limestone. It includes intertidal zone between

mean low and high water lines, and in places strips of storm gravels are found on the wave cut platform. Within the dune system are a number of ponds and water bodies, the most significant being Kenfig Pool which lies close to the visitor centre and car park. Its land form is a distinctive landscape unit, providing a unique foreground setting to the industrial and transport communication corridors (M4 motorway and Swansea-London railway line). Inland its significance is reflected in a range of designations including Kenfig Pool and Dunes National and Local Nature Reserve, Kenfig Site of Special Scientific Interest and Kenfig Burrows Special Area of Conservation. It is also included in the Cadw/CCW/ICOMOS Register of Landscapes of Outstanding Historic Interest in Wales.

Key Policy and Management Issues

- Maintenance of geographical and nature conservation character
- Conflict of overuse by public and resultant damage to resource
- Degradation of edge due to proximity to settlements
- Requirements of Natura 2000 designation

Boundary Justification

The boundary follows the local authority boundary to the north and west, roads and footpaths to the east and south. The detailed boundary will be confirmed by the County Borough Council.

Cross Reference to LANDMAP Information System

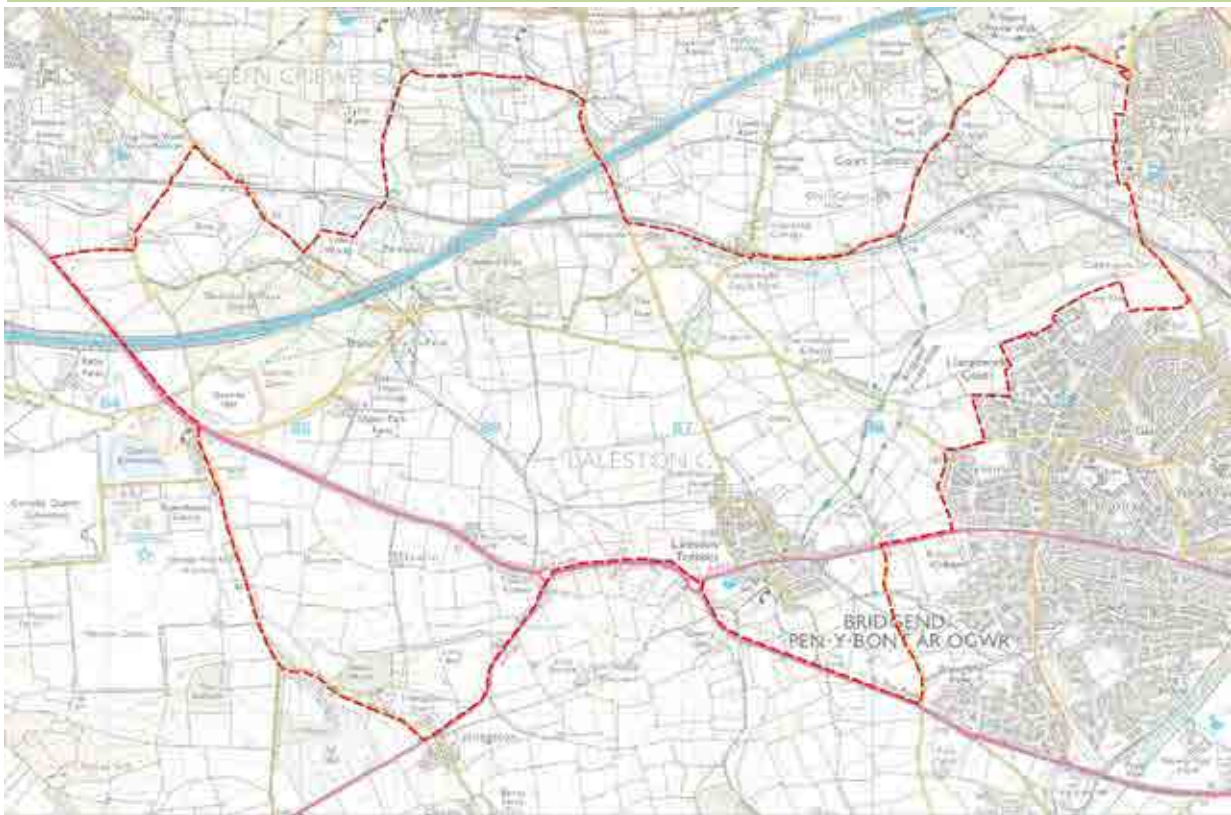
The validation of the SLA designations has been made against the criteria used to produce the evaluation level for each of the five evaluated aspect area topics. These are shown on the evaluation matrix.

The sub criteria for each aspect topic layer are as listed in Appendix B.

SLA 6 Kenfig Burrows			Evaluation Criteria									Overall Evaluation
Aspect Area	Area Name		1	2	3	4	5	6	7	8	9	
Geological Landscapes	GL045	Porthcawl/N. Cornelly	O	O	O	O						Outstanding
	GL047	Kenfig Burrows	O	M	H	O						Outstanding
Landscape Habitats	LH030		M	L	M	L	M	L	M	M		Moderate
	LH034		O	O	M	H	M	H	O	O		Outstanding
	LH035		L	M	M	L	M	M	H	M		High
Historic Landscapes	HL413	Kenfig Burrows & Golf Course	O	O	H	H	O					Outstanding
	HL654	Foreshore	H	O	H	O	O					Outstanding
	HL973	Cornelly to Laleston	H	O	H	H	O					Outstanding
Visual & Sensory	V5459	Porthcawl Hinterland	M	M	M	M						Moderate
	V5630	Kenfig Burrows	H	M	H	H						High
	V5847	Pyle	L	L	L	L						Low
	V5920	Kenfig Sands	H	H	H	H						High
Cultural Landscapes	CL005	Kenfig & Margam Burrows	M	H	L	H	O	H	H	O	U	Outstanding
	CL007	Sker House	H	O	H	H	H	O	L	M	U	High
	CL018	Pyle Kenfig Hill et alia	L	M	L	U	L	U	U	L	U	Low
	CL021	Vale of Glamorgan Rural Landscape	M	H	M	U	H	M	H	O	U	High

SLA 7: Laleston

LOCATION PLAN



PHOTOGRAPHS



From the A48 looking east



From Roger's Lane (north of Broadway Farm) looking east towards Bridgend Circular Walk

Relevance Against Strategic Criteria

Need - Open agricultural landscape adjacent to Bridgend and crossed by major transport routes. Potential pressure for further development to the west of Bridgend.

Coherence - Distinct plateau landscape rising to 100m AOD.

Consensus - Identified as a LCA in Bridgend UDP. Important geological landscape with nationally important outcrops/deposition patterns reflected in designation of Stormy Down SSSI and Local RIGS. Also identified for Cultural landscape qualities which relate to lost qualities rather than any existing inherent value.

Primary Landscape Qualities and Features

A distinctive plateau area rising to 100 metres AOD to the west of Bridgend. It is an area of mixed farmland with fields enclosed by hedgerow boundaries. It includes the Cefn Cribwr Grasslands SAC. The area is dissected by the M48 motorway, A48(T) road and the Swansea-Paddington railway line which create local corridors of visual and sensory detraction. The underlying geology is of national value and is reflected in the designation of a SSSI, where non-conforming deposits are visible through quarrying. Its western boundary abuts the former Newton Down airfield which is used for karting and has a number of industrial units dispersed across the area. These provide further local zones of visual and sensory detraction. The southern boundary abuts the village of Tythegston and includes the house and parkland of Tythegston Court, together with the wider landscape that forms its essential setting. The house is listed (Grade II), and the whole feature stretches back to the medieval period, with the current house and park showing primarily eighteenth century features with additions to the parkland gardens to the Edwardian period. The site is included on the Cadw/ICOMOS Register of Landscapes, Parks and Gardens of Special Historic Interest in Wales.

Key Policy and Management Issues

- Mitigation of visual and sensory detractors
- Settlement edge issues – fly tipping, degradation
- Maintenance of Geological SSSI/RIGS site
- Pressure for mineral extraction
- Historic parkland landscape management

Boundary Justification

To be defensible, the boundary follows the A48/A4106/A473 roads to the south and west, urban edge to the east and main roads, footpaths and dismantled railway to the north. The detailed boundary will be confirmed by the County Borough Council.

Cross Reference to LANDMAP Information System

The validation of the SLA designations has been made against the criteria used to produce the evaluation level for each of the five evaluated aspect area topics. These are shown on the evaluation matrix.

The sub criteria for each aspect topic layer are as listed in Appendix B.

SLA 7 Laleston												
	Aspect Area	Area Name	Evaluation Criteria									Overall Evaluation
			1	2	3	4	5	6	7	8	9	
Geological Landscapes	GL040	Ogwr Valley	L	L	L	L						Low
	GL044	Bridgend Plain	M	L	M	L						Moderate
	GL045	Porthcawl/N. Cornelly	O	O	O	O						Outstanding
Landscape Habitats	LH027		H	H	M	H	M	H	O	O		Outstanding
	LH029		M	M	M	M	U	H	H	H		High
	LH030		M	L	M	L	M	L	M	M		Moderate
	LH031		M	L	M	L	M	L	L	L		Low
	LH039		L	L	M	L	L	M	L	L		Low
Historic Landscapes	HL179	Tyhegston Court	O	H	H	H	H					High
	HL342	Cwrt Colman	H	H	H	H	M					High
	HL973	Cornelly to Laleston	H	O	H	H	O					Outstanding
Visual & Sensory	VS004	M4 Motorway	L	L	M	M						Low
	VS825	Newton Down	M	M	M	M						Moderate
	VS828	Between bridgend & Merthyr Mawr	M	M	M	M						Moderate
	VS842	Porthcawl	M	L	M	M						Moderate
	VS955	Cribwr	L	M	M	M						Moderate
Cultural Landscapes	CL001	M4 Motorway	O	O	O	U	H	U	L	L	H	Outstanding
	CL003	Great Western Railway	O	H	H	U	H	O	L	L	H	Outstanding
	CL012	South Cornelly Quarries	L	H	M	U	H	U	M	U	U	High
	CL013	Laleston & Coychurch	L	L	L	U	L	U	U	L	L	Outstanding
	CL015	Bridgend	H	H	M	H	O	H	M	H	U	Outstanding
	CL019	Cefn Cribwr Parc Slip Bedford Park	L	H	L	U	M	U	U	M	U	High
	CL021	Vale of Glamorgan Rural Landscape	M	H	M	U	H	M	H	O	U	High

SLA 8: Porthcawl Coast

LOCATION PLAN



PHOTOGRAPHS



Rest Bay to Lock's Common



Sandy Bay



Trecco Bay

Relevance Against Strategic Criteria

Need - Distinct landscape unit which forms the coastal setting of Porthcawl.

Coherence - Clearly recognisable unit adjoining SLAs 6 and 9.

Consensus - Currently the professional stakeholders consider the area warrants consideration as a SLA.

Primary Landscape Qualities and Features

Extending from Sker Point to Newton Point, the area is formed primarily by the intertidal zone that fronts Porthcawl and its hinterland. It is a mixture of exposed rock (Sker Point which lies within the Kenfig SAC, Hutchwns Point, Irongate Point, Porthcawl Point and Newton Point) and sandy beaches including Rest Bay, Sandy Bay and Trecco Bay. The exposed rocky outcrops form an important area of limestone pavement. In the west it abuts the Royal Porthcawl Golf Club as well as the landscape setting of Sker House. At Porthcawl it includes Lock's Common (a Local Nature Reserve and RIGS), but excludes the remainder of the urban area. The close juxtaposition to the town increases the range of visual and sensory detractors, particularly at Trecco Bay. It forms an important and much appreciated seascape setting to the important visitor destination that Porthcawl remains.

Key Policy and Management Issues

- Management of intertidal zone
- Careful consideration of landside developments and consequent effects upon qualities of SLA
- Degradation through public access and recreational uses.
- Lock's Common Local Nature Reserve and RIGS
- Management of Natura 2000 sites

Boundary Justification

Abuts SLA 6 to the north and SLA 9 to the southeast along the Heritage Coast boundary. The northeast boundary abuts the golf course and urban edge.

Cross Reference to LANDMAP Information System

The validation of the SLA designations has been made against the criteria used to produce the evaluation level for each of the five evaluated aspect area topics. These are shown on the evaluation matrix.

The sub criteria for each aspect topic layer are as listed in Appendix B.

SLA 8 Porthcawl Coast

	Aspect Area	Area Name	Evaluation Criteria									Overall Evaluation
			1	2	3	4	5	6	7	8	9	
Geological Landscapes	GL045	Porthcawl/N. Cornely	O	O	O	O						Outstanding
	GL046	Merthyr Mawr	O	M	H	M						Outstanding
	GL047	Kenfig Burrows	O	M	H	O						Outstanding
Landscape Habitats	LH035		L	M	M	L	M	M	H	M		High
	LH036		H	H	M	H	H	H	H	M		High
	LH037		L	L	L	L	M	M	L	H		Moderate
Historic Landscapes	HL654	Foreshore	H	O	H	O	O					Outstanding
	HL760	Porthcawl	H	H	M	M	H					High
Visual & Sensory	VS304	Newton Point	H	H	H	H						High
	VS459	Porthcawl Hinterland	M	M	M	M						Moderate
	VS630	Kenfig Burrows	H	M	H	H						High
	VS842	Porthcawl	M	L	M	M						Moderate
	VS920	Kenfig Sands	H	H	H	H						High
Cultural Landscapes	CL007	Sker House	H	O	H	H	H	O	L	M	U	High
	CL008	Royal Porthcawl Golf Club	H	H	L	U	U	H	H	U	U	High
	CL009	Porthcawl	H	M	L	U	O	H	H	H	H	High
	CL011	Trecco Bay & Coney Beach	H	H	H	U	U	H	M	U	U	High

SLA 9: Merthyr-mawr Warren

LOCATION PLAN



PHOTOGRAPHS



Merthyr-mawr Warren dune/woodland edge



Merthyr-mawr Warren dunes



Merthyr-mawr Warren looking towards The Flats



Merthyr-mawr Warren woodland edge



Merthyr-mawr thatched cottages

Relevance Against Strategic Criteria

Need - One of the two important sand dune landscapes found in Bridgend. Different to Kenfig as it has been formed by periods of ensandment over time which has buried the contemporary landscapes. Although certain features and areas have statutory protection, the remainder of the area does not and given the application of SLA will enhance coherence of management policies.

Coherence - Abuts Vale of Glamorgan SLA and proposed SLA 8 at Porthcawl.

Consensus - Currently the professional stakeholders consider the area warrants consideration as a SLA.

Primary Landscape Qualities and Features

The proposed SLA comprises of two discrete yet interrelated landscape units, namely Merthyr-mawr Warren and the historic parkland and adjoining area associated with Merthyr Mawr house. The Warren is an extensive area of littoral windblown sand deposits, rising up in places to 80 metres AOD, and dominating the views of the estuary and immediate hinterland around Merthyr Mawr, it also includes the foreshore down to the mean low water level.

Within the dune system are a series of small spinneys, which together with the rolling landforms create a series of intimate spaces. The views across the Severn Estuary provide a distinct sense of place, although this is somewhat compromised by its interrelationship to the urban edge of Porthcawl at Newton and Trecco Bay.

The remainder of the area is formed by the historic house and parkland and associated estate village of Merthyr Mawr. The house and landscape park (Grade II)

was laid out in the early nineteenth century and was added to in 1900. It is included on the Cadw/ICOMOS Register of Landscapes, Parks and Gardens of Special Historic Interest in Wales.

Culturally and historically it is an important landscape containing Merthyr Mawr House, estate village and the remains of the medieval castles/fortified houses. The area provides an outstanding example of an evolved landscape and dual order. Importantly due to its besandment it has resulted in layers of former landscapes dating back to the Neolithic, being buried.

Key Policy and Management Issues

- Loss of distinctive landscape features
- Maintenance of distinct settlement pattern
- Degradation and overuse by public leading to loss of inherent qualities.

Boundary Justification

The southern and eastern boundaries are defined by the local authority boundary. The SLA extends up the River Ogmore to the north-east, following footpaths and minor roads here and along its north boundary. It includes areas of woodland that are of high habitat evaluation but not presently covered by any other designation.

Cross Reference to LANDMAP Information System

The validation of the SLA designations has been made against the criteria used to produce the evaluation level for each of the five evaluated aspect area topics. These are shown on the evaluation matrix.

The sub criteria for each aspect topic layer are as listed in Appendix B.

SLA 9 Merthyr-mawr Warren

	Aspect Area	Area Name	Evaluation Criteria									Overall Evaluation
			1	2	3	4	5	6	7	8	9	
Geological Landscapes	GL040	Ogwr Valley	L	L	L	L						Low
	GL044	Bridgend Plain	M	L	M	L						Moderate
	GL045	Porthcawl/N. Cornelly	O	O	O	O						Outstanding
	GL046	Merthyr Mawr	O	M	H	M						Outstanding
Landscape Habitats	LH035		L	M	M	L	M	M	H	M		High
	LH041		M	M	L	M	M	H	M	M		Moderate
	LH042		O	H	M	H	L	M	O	H		Outstanding
	LH043		M	M	M	L	M	M	M	H		High
	LH044		M	L	M	L	M	L	M	M		Moderate
Historic Landscapes	HL231	Merthyr Mawr	O	O	O	O	H					Outstanding
	HL654	Foreshore	H	O	H	O	O					Outstanding
	HL685	Merthyr Mawr Warren	O	O	H	H	O					Outstanding
	HL760	Porthcawl	H	H	M	M	H					High
	HL973	Cornelly to Laleston	H	O	H	H	O					Outstanding
Visual & Sensory	VS304	Newton Point	H	H	H	H						High
	VS825	Newton Down	M	M	M	M						Moderate
	VS828	Between bridgend & Merthyr Mawr	M	M	M	M						Moderate
	VS920	Kenfig Sands	H	H	H	H						High
	VS987	Merthyr Mawr Warren	H	H	H	H						High
Cultural Landscapes	CL006	Merthyr Mawr	L	H	H	U	H	H	U	H	U	Outstanding
	CL010	Nottage & Newton	M	M	L	U	M	M	H	U	U	Moderate
	CL021	Vale of Glamorgan Rural Landscape	M	H	M	U	H	M	H	O	U	High

4.0 Conclusions

4.1 The review of the Bridgend landscape for areas for SLA designation has clearly defined a number of landscapes warranting consideration. They include a range of distinctive areas which reflect the differing landscape types found throughout the County Borough area. In a number of cases they reflect the current protected landscapes as defined within the Bridgend UDP.

4.2 The purpose of the exercise has been to use the national guidance methodology issued by CCW against the Quality Assurance LANDMAP data sets for the area. The areas identified remain as recommendations from the study team. The final choice of SLAs, their boundaries and the inclusion of other areas remains the responsibility of the County Borough Council.

APPENDICES

Appendix A:	Figures
Figure 1.0	Boundary of Study Areas
Figure 2.0	Methodology Process diagram (see p5)
Figure 3.0	Aspect Area Overlays
Figure 4.0	Broad Search Areas
Figure 5.0	Candidate Special Landscape Areas
Figure 6.0	Existing Landscape Conservation Areas

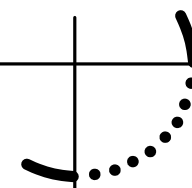


© Crown copyright. All rights reserved.
Licence number 100018271.

KEY

--- County Boundary

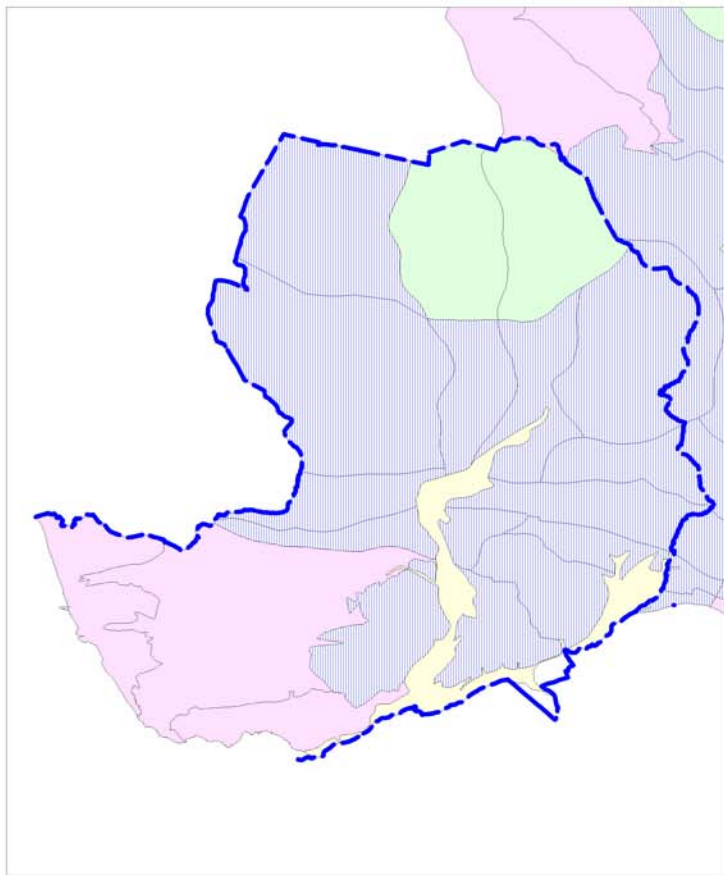
Rev A: 25.02.10: new UA boundary



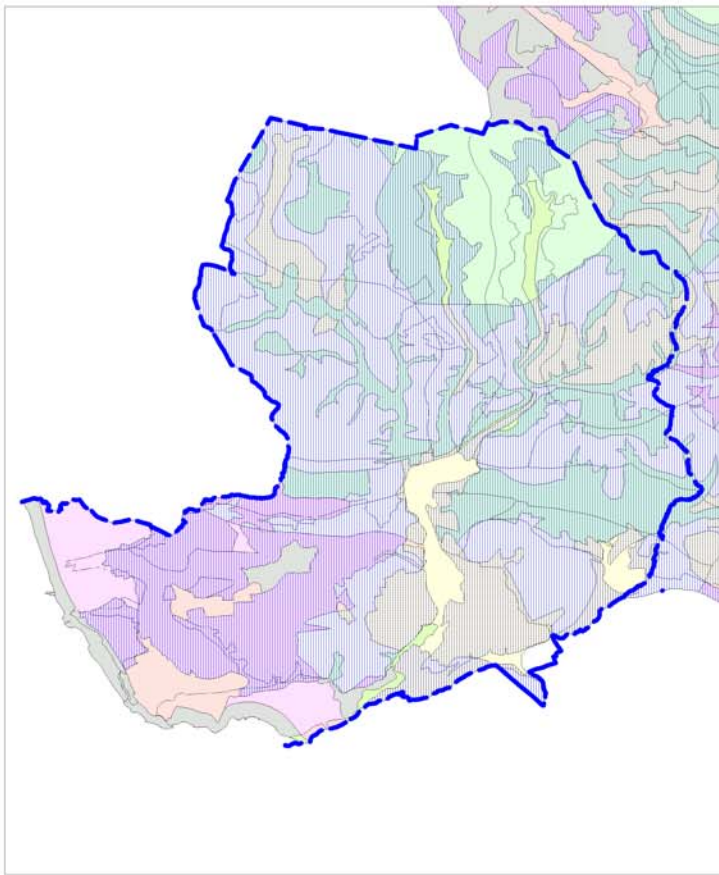
Bridgend County Council
Special Landscape Areas Review

Bridgend County Borough Council

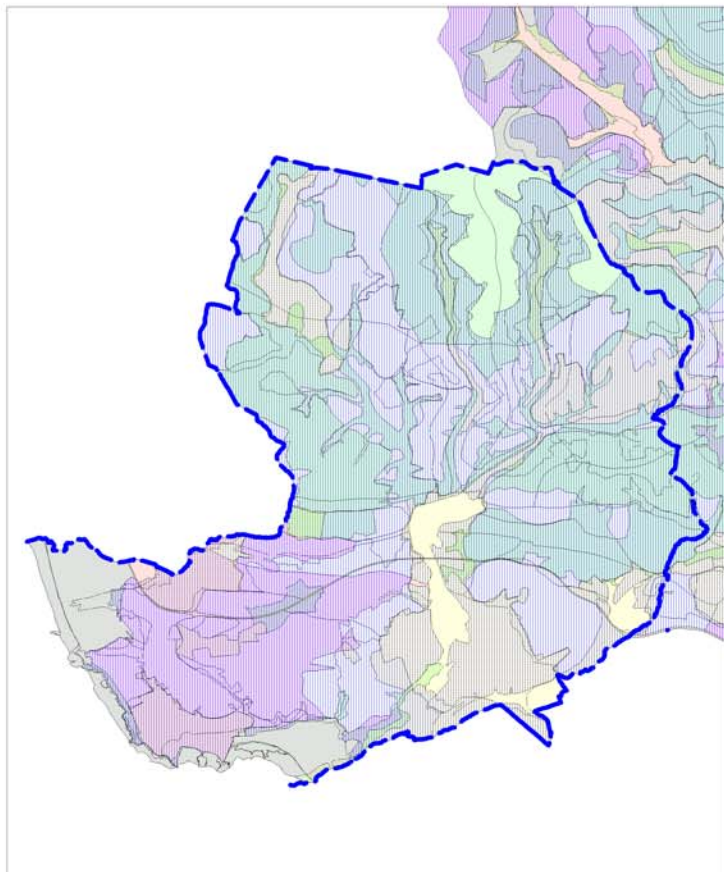
TACP



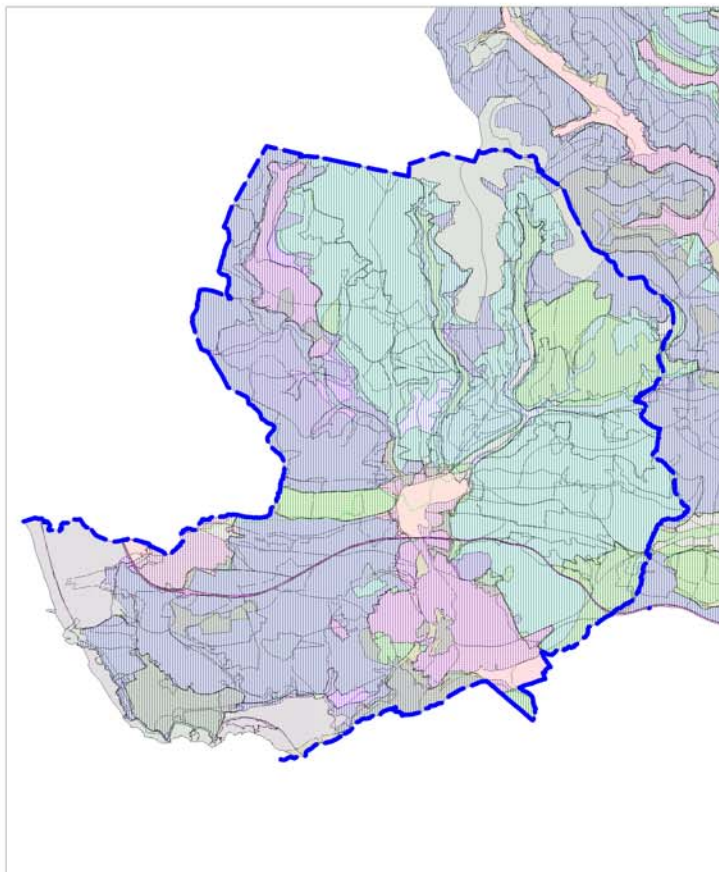
Geological Aspect Layer



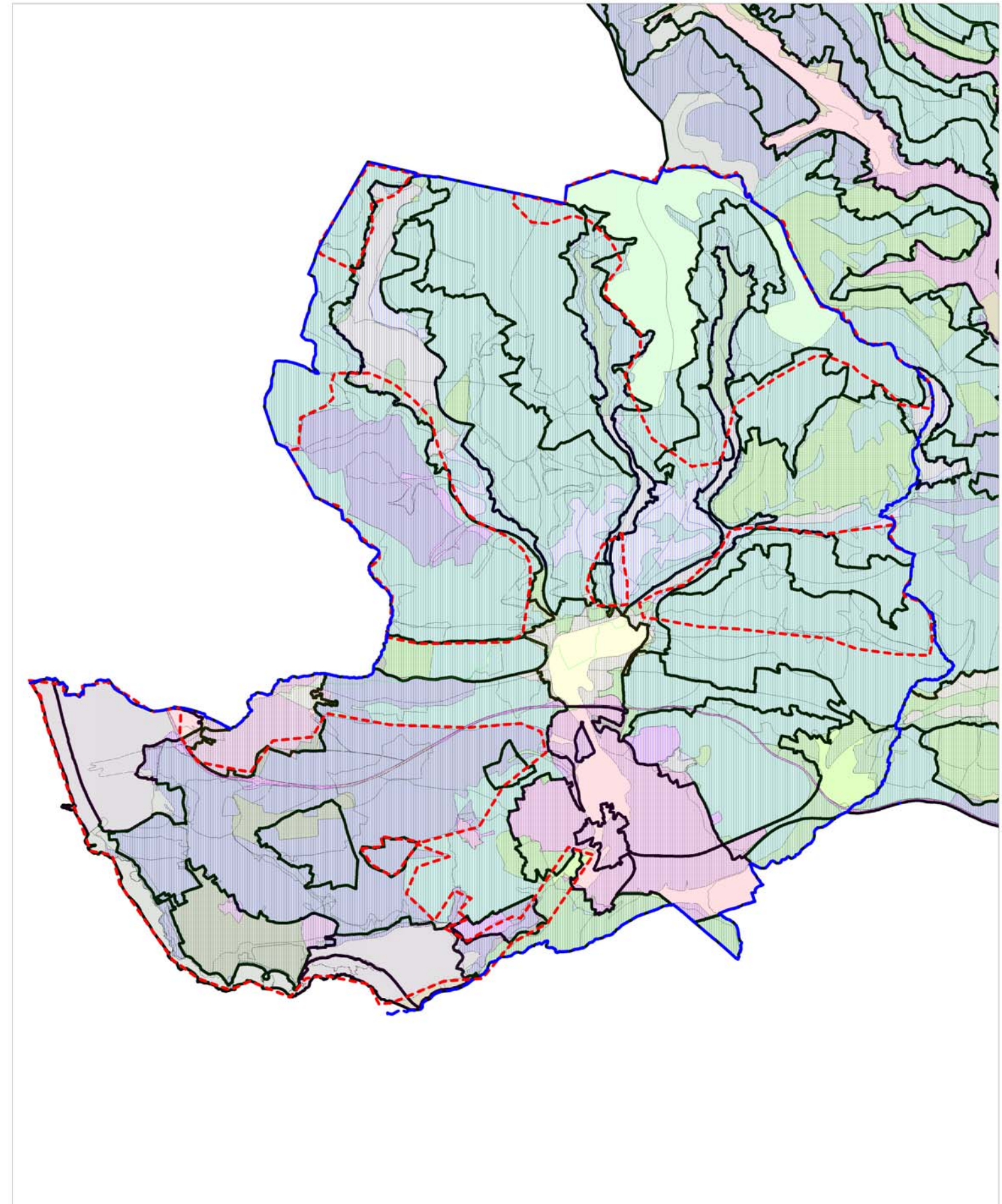
Geological and Landscape Habitats Aspect Layers



Geological, Landscape Habitats and Visual & Sensory Aspect Layers



Geological, Landscape Habitats, Visual & Sensory and Historic Landscapes Aspect Layers



Geological, Landscape Habitats, Visual & Sensory, Historic Landscapes, Cultural Landscapes Aspect Layers and Broad Search Areas

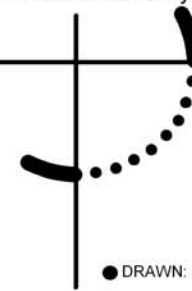


© Crown copyright. All rights reserved.
Licence number 100018271.

KEY

- County Boundary
- Broad search Areas
- Outstanding
- High
- Moderate
- Low
- Unassessed

Rev A: 25.02.10: new UA boundary

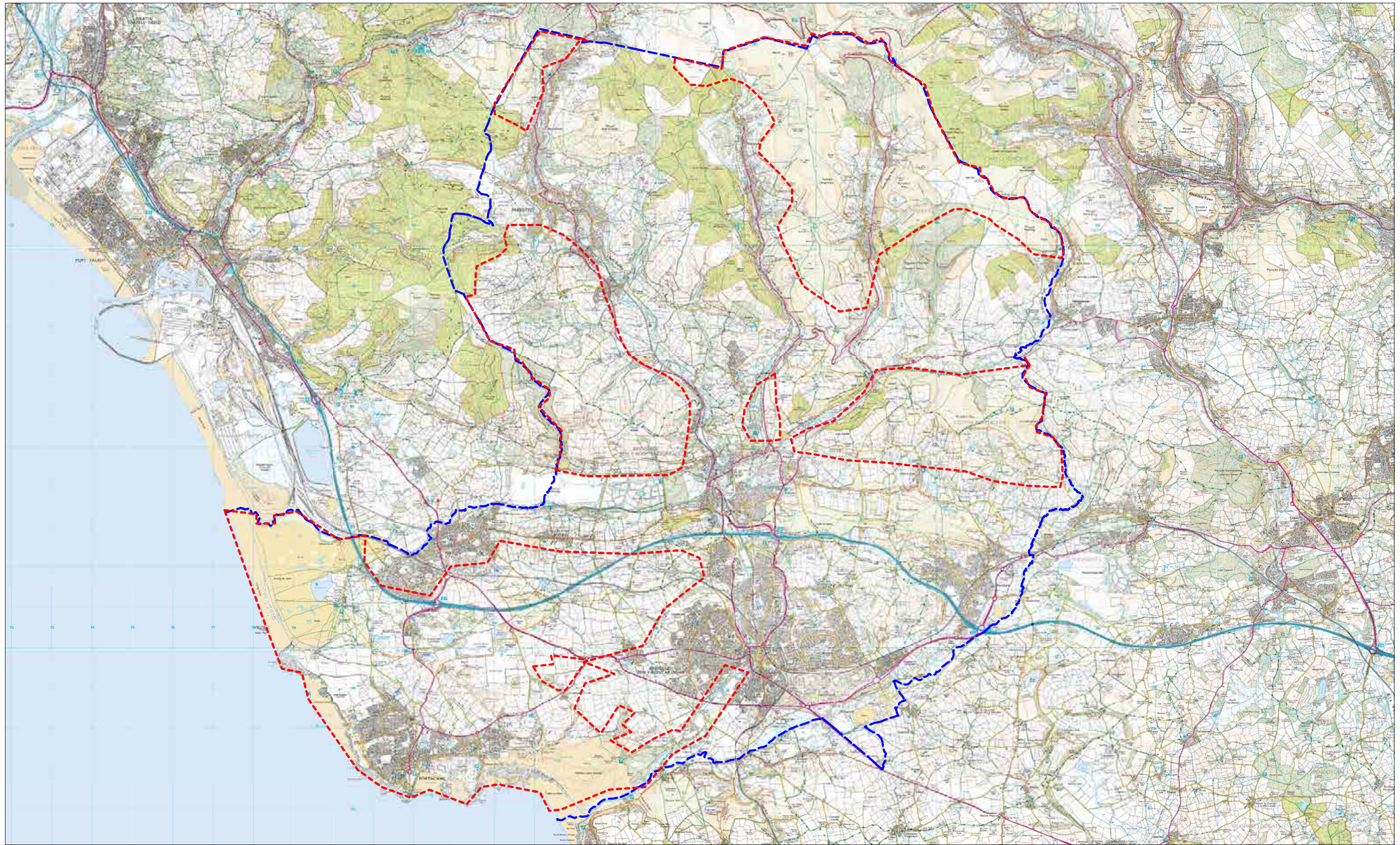


Bridgend County Council
Special Landscape Areas Review

Identification of Broad Search Areas

● DRAWN: CD ● CHECKED: LJ ● NOT TO SCALE ● DATE: DEC 2009 ● OFFICE: CARDIFF ● DWG NO: 8279/03-A

TACP

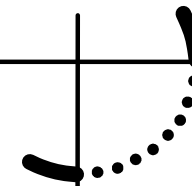


© Crown copyright. All rights reserved.
Licence number 100018271.

KEY

- County Boundary
- Broad search Areas

Rev A: 25.02.10: new UA boundary



Bridgend County Council
Special Landscape Areas Review

Broad Search Areas

● DRAWN: CD ● CHECKED: LJ ● NOT TO SCALE ● DATE: DEC 2009 ● OFFICE: CARDIFF ● DWG NO: 8279/04-A

TACP

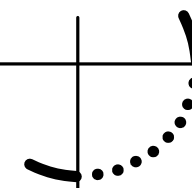


© Crown copyright. All rights reserved.
Licence number 100018271.

KEY

- - - County Boundary
- - - Candidate Special Landscape Areas

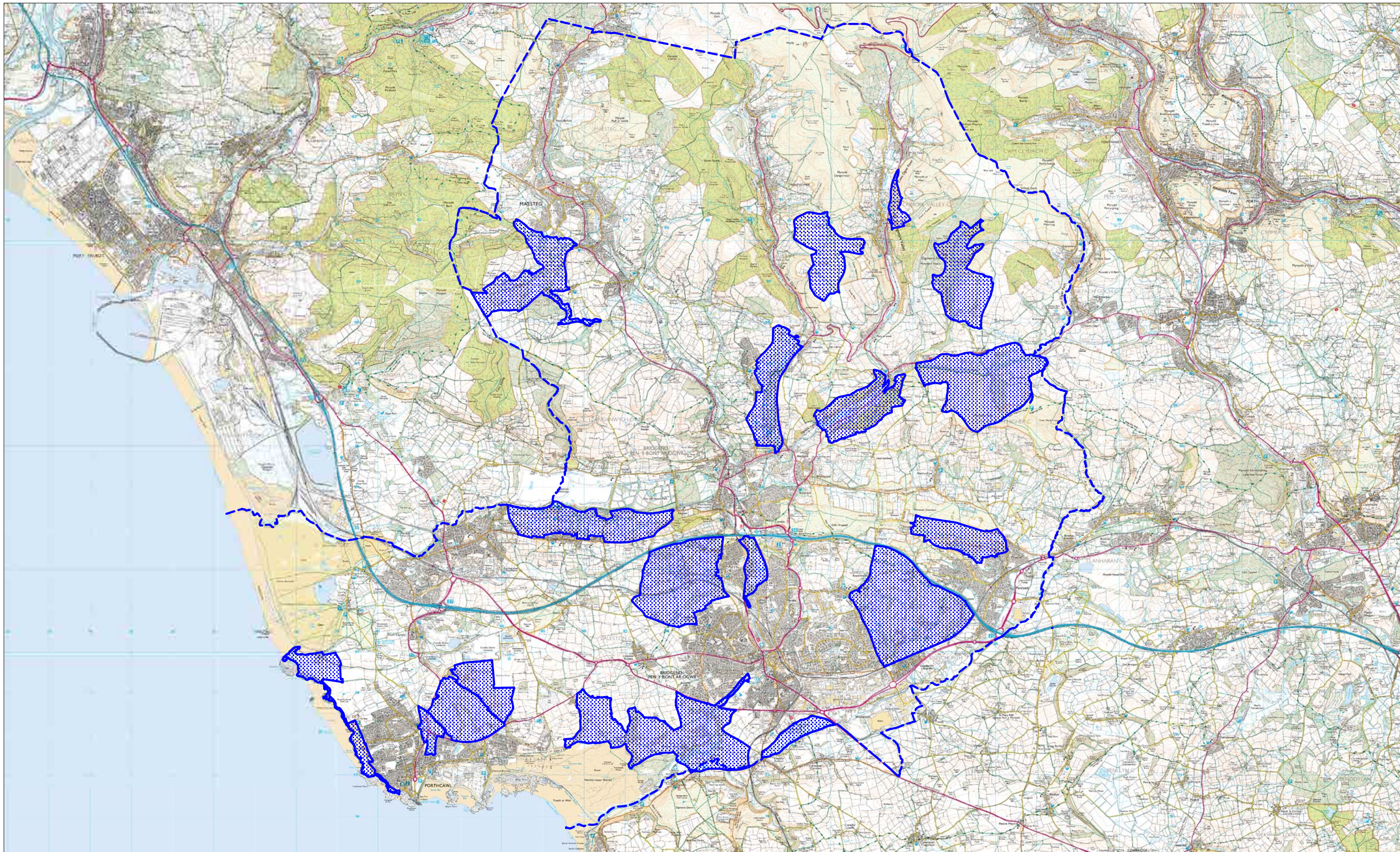
Rev A: 25.02.10: new UA boundary
Rev B: 25.03.10: amended SLA 9 boundary



Bridgend County Council
Special Landscape Areas Review



Candidate Special Landscape Areas

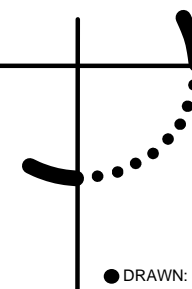
TACP



© Crown copyright. All rights reserved.
Licence number 100018271.

KEY

-  County Boundary
-  Landscape Conservation Areas



Bridgend County Council
Special Landscape Areas Review

**Bridgend County Borough Council
Existing Landscape Conservation Areas**

TACP

APPENDIX B - The sub criteria for each aspect topic layer are as follows:-

Geological Landscapes	1 – Research/Educational Value 2 – Historic Value 3 – Rarity/Uniqueness 4 – Classic Example
Landscape Habitats	1 – Priority Habitats 2 – Significance 3 – Opportunity 4 – Decline Rates 5 – Threat 6 – Fragmentation 7 – Habitat Evaluation 8 – Importance for Key Species
Visual and Sensory	1 – Scenic Quality 2 – Integrity 3 – Character 4 – Rarity
Historic Landscapes	1 – Rarity 2 – Survival/Preservation 3 – Coherence 4 – Potential 5 – Amenity Value
Cultural Landscapes	1 – Recognition/Transparency 2 – Period 3 – Rarity 4 – Documentation 5 – Group Value 6 – Survival 7 – Vulnerability 8 – Diversity 9 – Potential

Each of the aspect tables are colour coded as detailed below:

- Red – Outstanding
- Green – High
- Blue – Moderate
- Yellow – Low
- White – Unassessed

More detailed definitions of each of the sub criteria are available in the LANDMAP Handbook or through the LANDMAP website – <http://landmap.ccw.gov.uk>

APPENDIX C - Schedule and Plan of Landscape Conservation Areas

	Name	Community	Representative Landscape	Size (hec)
1.	Aber Woods	Ogmore Valley	Steep wooded valley sustran	25
2.	Blackmill Woods	Ogmore Valley	Ancient oak woodland	187
3.	Bryngarw	Gara Valley	Wooded, gently sloping agricultural and park landscape	170
4.	Cefn Cribbwr/ Cwm Ffos	Cefn Cribwr	Enclosed meadows & industrial archaeology interest.	262
5.	Coed-y-Mustur	Coity Higher	Woodland & rolling lowland	188
6.	Court Colmaic	Laleston	Agricultural landscape with wood & country house	337
7.	Cwm Ogwr Fach	Coity Higher	Rolling upland heath & narrow valley	381
8.	Ewenny Moor	Ewenny	Low lying river floodplain, historic landform	55
9.	Gilanrhyd river side	Newcastle Higher	Well-wooded river valley	52
10.	Merthyr Mawr	Merthyr Mawr	Rolling lowland and river border	344
11.	Nottage Court	Porthcawl	Intimate, varied, historic	30
12.	Pant-yr-lards	Porthcawl	Escarpment, varied landform and cover	30
13.	Pant-y-foel	Garw Valley	Exposed upland moorland	174
14.	Rest Bay	Porthcawl/Cynffig	Exposed coastal fringe	113
15.	Tythegston	Merthyr Mawr	Undulating limestone agricultural land	114
16.	Upper Dimbath	Ogmore Valley	Steep secluded wooded valley	123
17.	Upper Llangynwyd	Llandgynwyd Middle	Varies from high moorland to steep wooded valley	240
18.	Zig Zag Lane	Porthcawl	Medieval field pattern	182
19.	Coed Iestyn	Pencoed	Escarpment, varied landform and cover	138



TACP Cardiff

10 Park Grove
Cardiff CF10 3BN
T: 029 2022 8966
F: 029 2039 4776
E: cardiff@tacp.uk.com

TACP Wrexham

27/29 Grosvenor Road
Wrexham LL11 1DH
T: 01978 291161
F: 01978 351735
E: wrexham@tacp.uk.com

www.tacp.uk.com