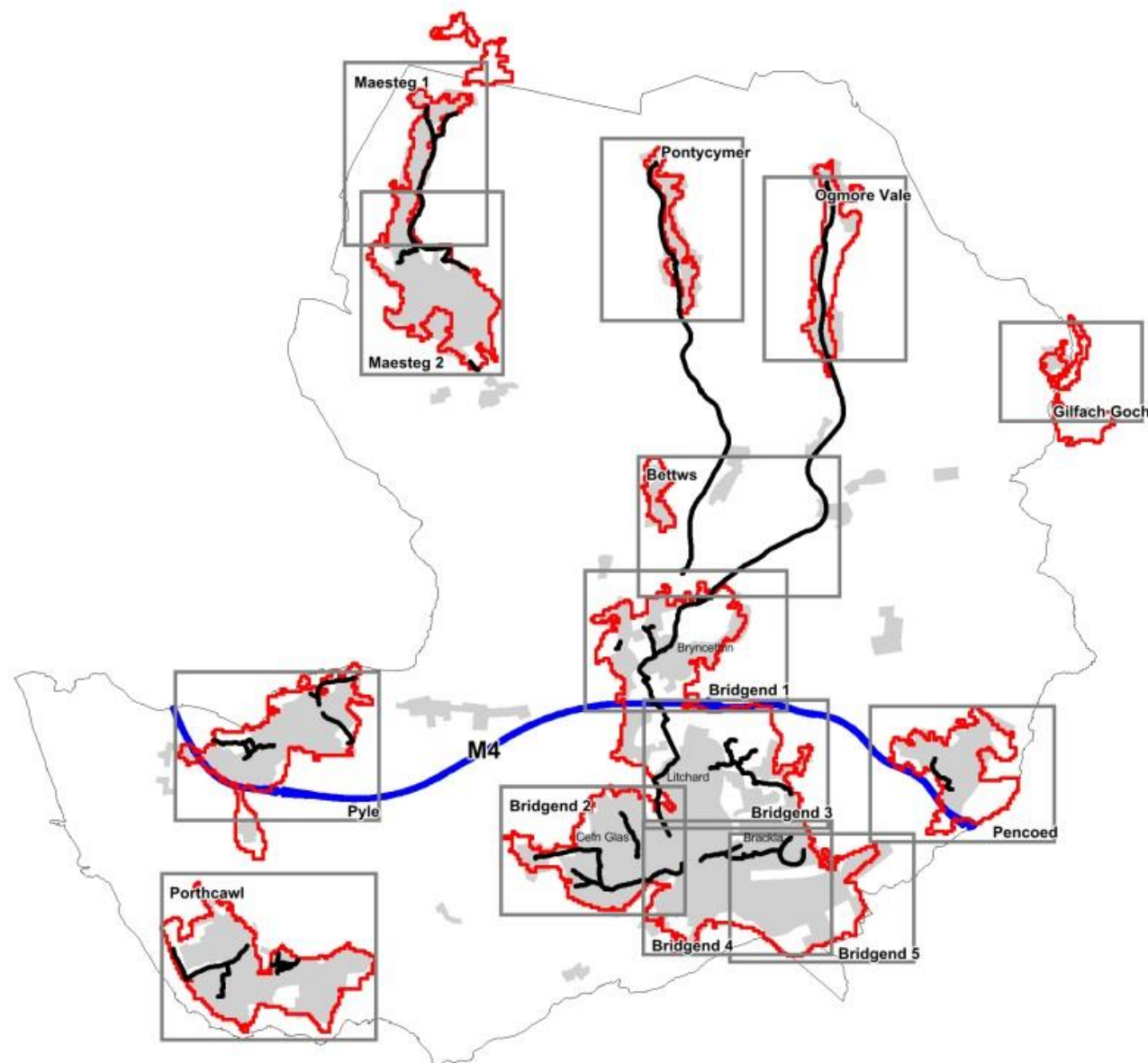


# Bridgend County Borough Council

## Active Travel Existing Routes Map Consultation

Settlement	Route ID	Route
Bettws		
Bridgend	BRC1 BRC2a - c BRC3a - b BRC4 BRC5a - h BRC6a - c BRC7a - e BRC8a - d BRC9a - b BRC10 BRP1	Maesteg Road Link Sarn to Coleg Cymunedol y Dderwen Sarn to Abergarw Industrial Estate (NCN4) Brynmenyn to Blackmill (NCN4) Sarn to Bridgend (NCN885) Litchard to Brackla (via Parc Derwen) Bridgend to Brackla Bridgend to Broadlands Broadlands to Laleston Park Street to Cefn Glas
Gilfach Goch		
Maesteg	MAC1a - c MAC2 MAC3a - b MAC4	Caerau to Maesteg School (NCN885) Caerau Park to Caerau Square Maesteg Leisure Centre to Maesteg School (NCN885) Heol Neuadd Ddomos to Cwmfelin Primary School
Ogmore Vale	OVC1 OVC2 OVC3	Nantymoel to Ogmore Vale Leisure Centre Ogmore Vale to Leisure Centre Ogmore Vale to Blackmill
Pencoed	PEP1	Pencoed Comprehensive School Link
Pontycymer	POC1 POC2	Blaengarw to Pontycymer Pontycymer to Bryngarw Country Park
Porthcawl	PORC1a - d PORC2a - c PORP1	Rest Bay to Nottage Porthcawl Primary School Links Locks Lane to Porthcawl Comprehensive School Link
Pyle	PYC1a - b PYC2a - b PYC3a - d PYC4	Marlas to Pyle Railway Station Marlas to Cornelli Primary School Kenfig Hill to Bridge Street (NCN4) Bridge Street to Cynffig Comprehensive School



**BRIDGEND COUNTY  
BOROUGH COUNCIL  
COMMUNITIES  
DIRECTORATE**

Corporate Director

Mark Shephard

Civic Offices  
Angel Street  
Bridgend CF31 4WB  
Telephone (01656) 643643

**Bridgend County  
Borough**

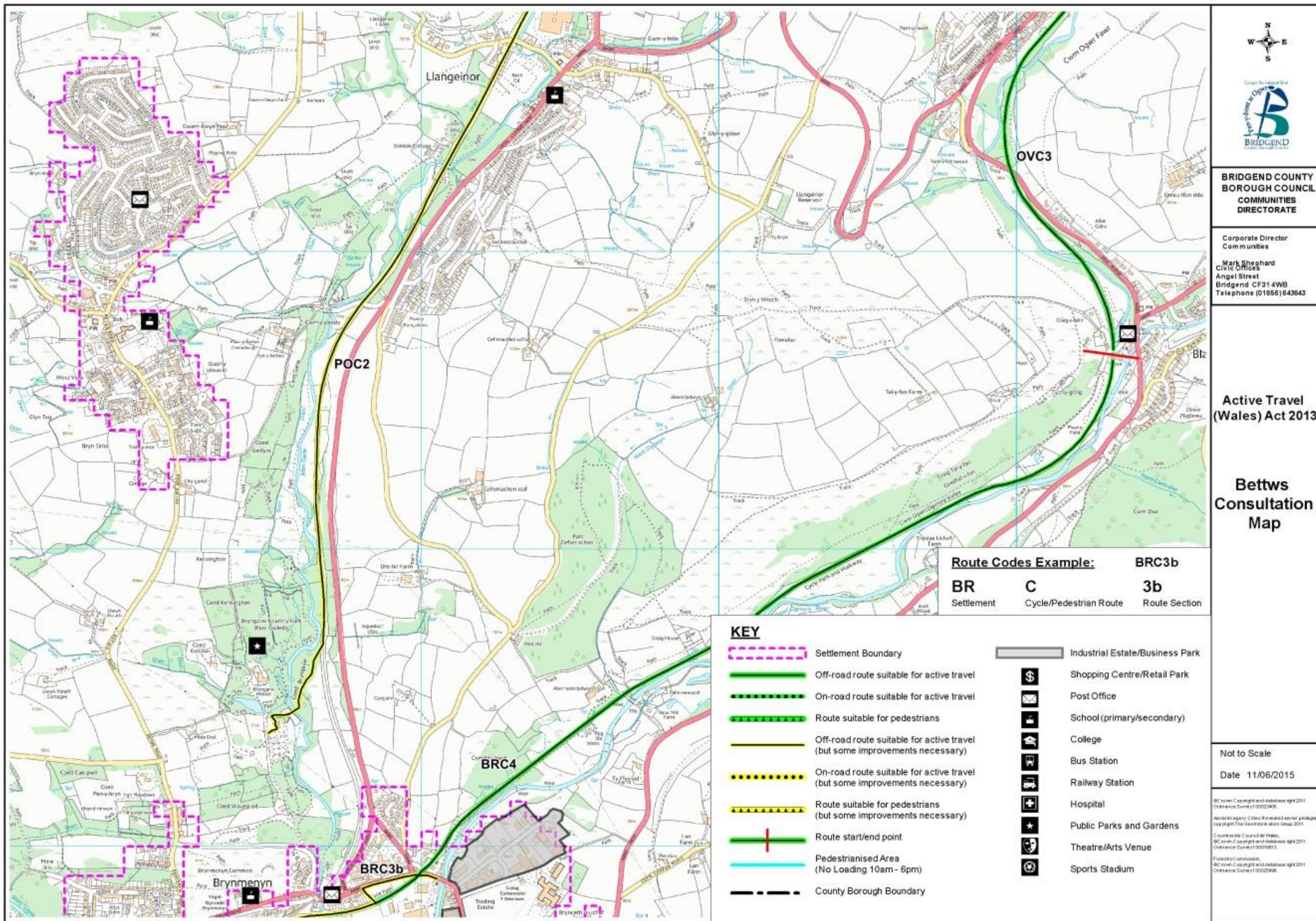
**Active Travel  
Overview Map**

Not to Scale

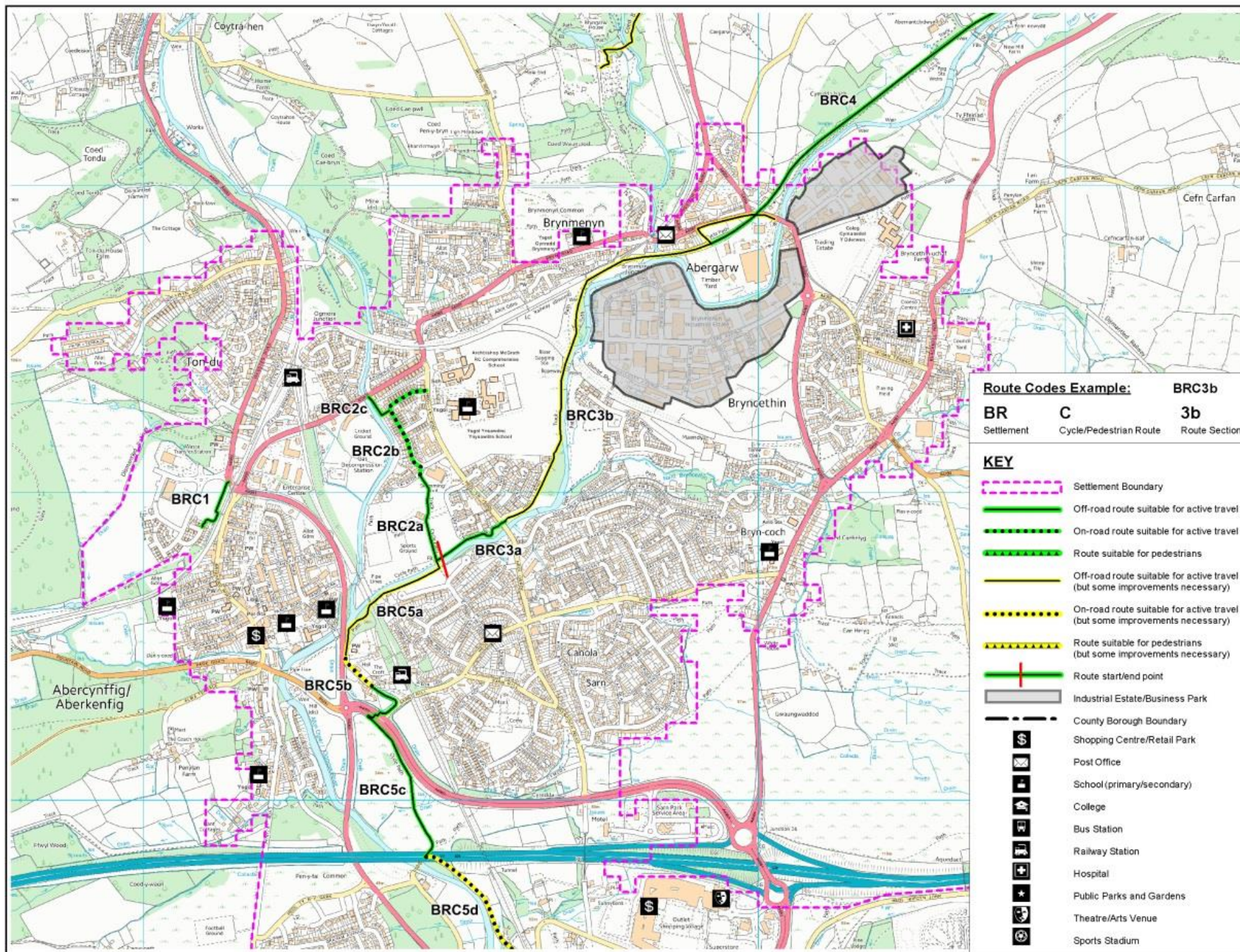
Date 16/06/2015

BC town Copyright and database right 2011.  
Ordnance Survey 100023408.  
Aerial Imagery: Cities Revealed aerial photography  
copyright The GeoInformation Group 2011.  
Copyright Council for Wales,  
BC town Copyright and database right 2011.  
Ordnance Survey 100023408.  
Forestry Commission,  
BC town Copyright and database right 2011.  
Ordnance Survey 100023408.









**BRIDGEND COUNTY BOROUGH COUNCIL COMMUNITIES DIRECTORATE**

Corporate Director Communities  
  
Mark Shephard  
Civic Offices  
Angel Street  
Bridgend CF31 4WB  
Telephone (01656) 643643

**Route Codes Example:**

<b>BR</b>	<b>C</b>	<b>BRC3b</b>
Settlement	Cycle/Pedestrian Route	Route Section

**KEY**

- Settlement Boundary
- Off-road route suitable for active travel
- On-road route suitable for active travel
- Route suitable for pedestrians
- Off-road route suitable for active travel (but some improvements necessary)
- On-road route suitable for active travel (but some improvements necessary)
- Route suitable for pedestrians (but some improvements necessary)
- Route start/end point
- Industrial Estate/Business Park
- County Borough Boundary
- Shopping Centre/Retail Park
- Post Office
- School (primary/secondary)
- College
- Bus Station
- Railway Station
- Hospital
- Public Parks and Gardens
- Theatre/Arts Venue
- Sports Stadium

**Active Travel (Wales) Act 2013**

**Bridgend Consultation Map 1 (North)**

Not to Scale  
Date 11/06/2015

BC Crown Copyright and database right 2011. Ordnance Survey 100020455.  
Aerial Imagery: Crown Copyright and database right 2011. Ordnance Survey 100020455.  
Countryside Council for Wales, BC Crown Copyright and database right 2011. Ordnance Survey 100020455.  
Public Domain map data, BC Crown Copyright and database right 2011. Ordnance Survey 100020455.



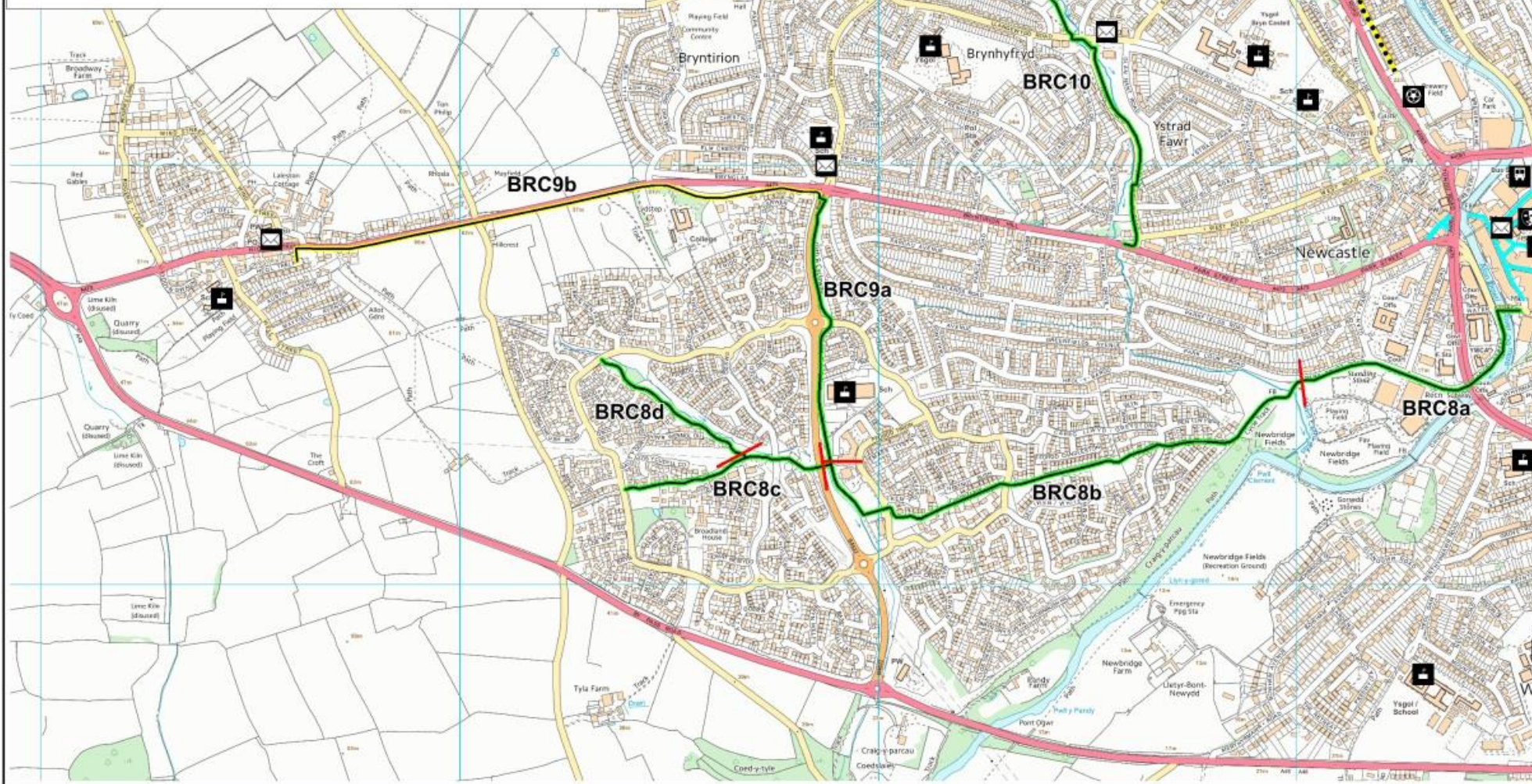
# KEY

- |  |   |  |                                 |
|--|---|--|---------------------------------|
|  | Settlement Boundary   |  | Industrial Estate/Business Park |
|  | Off-road route suitable for active travel                                   |  | Shopping Centre/Retail Park     |
|  | On-road route suitable for active travel                                    |  | Post Office                     |
|  | Route suitable for pedestrians  |  | School (primary/secondary)      |
|  | Off-road route suitable for active travel (but some improvements necessary) |  | College                         |
|  | On-road route suitable for active travel (but some improvements necessary)  |  | Bus Station                     |
|  | Route suitable for pedestrians (but some improvements necessary)            |  | Railway Station                 |
|  | Route start/end point   |  | Hospital                        |
|  | Pedestrianised Area (No Loading 10am - 6pm)                                 |  | Public Parks and Gardens        |
|  | County Borough Boundary   |  | Theatre/Arts Venue              |
|  |   |  | Sports Stadium                  |

## Route Codes Example:

**BR** Settlement  
**C** Cycle/Pedestrian Route  
**5h** Route Section

## BRC5h



**BRIDGEND COUNTY BOROUGH COUNCIL COMMUNITIES DIRECTORATE**

Corporate Director Communities

Mark Shephard  
Civic Offices  
Angel Street  
Bridgend CF31 4WB  
Telephone (01656) 643643

**Active Travel (Wales) Act 2013**

**Bridgend Consultation Map 2 (West)**

Not to Scale

Date 11/06/2015

© Crown Copyright and database right 2011. Ordnance Survey 100025498.

Reproduction of this document is prohibited without the permission of the Council.

Copyright © The Council for Wales.

© Crown Copyright and database right 2011. Ordnance Survey 100025498.

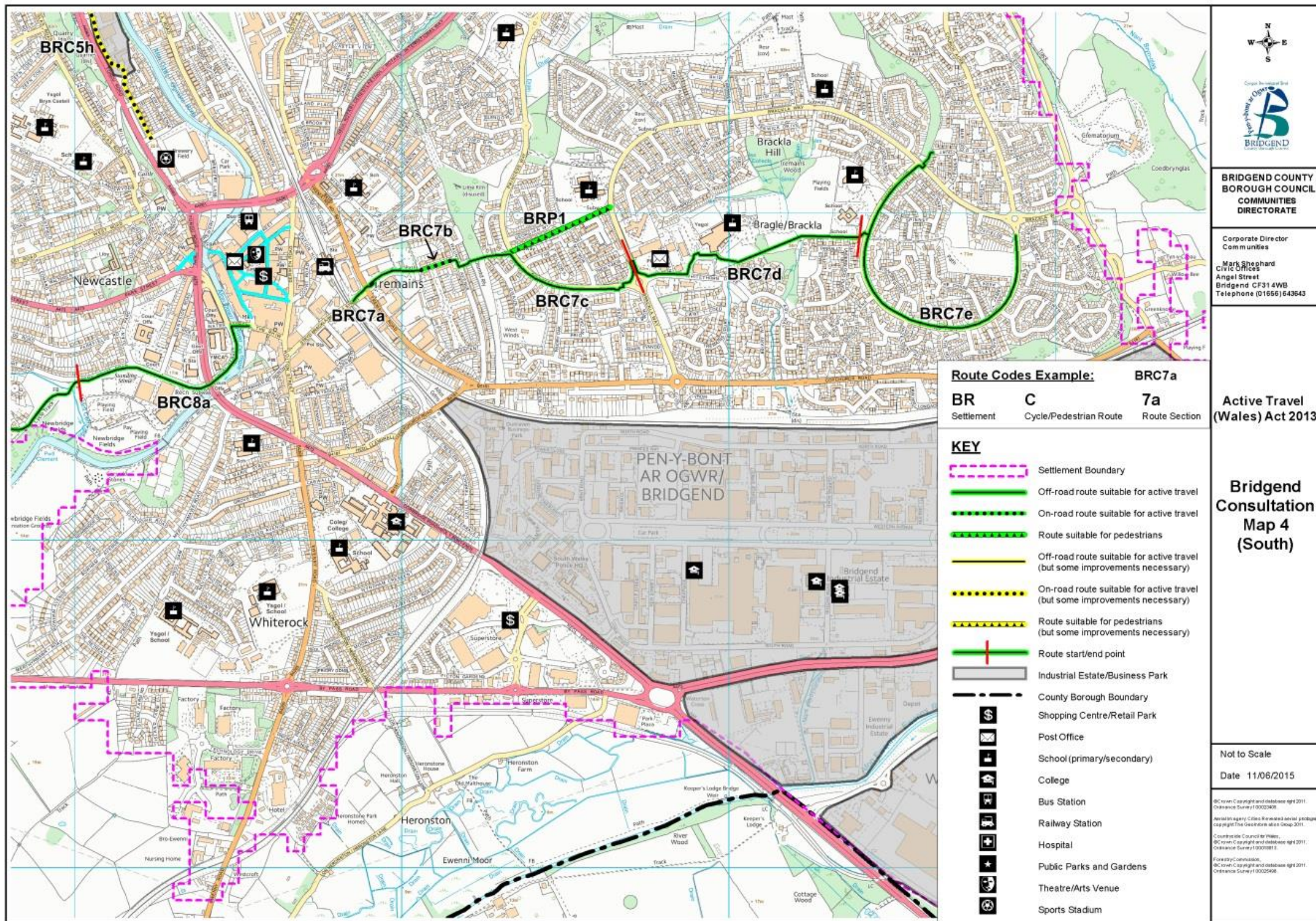
For further information, please contact the Council.

© Crown Copyright and database right 2011. Ordnance Survey 100025498.

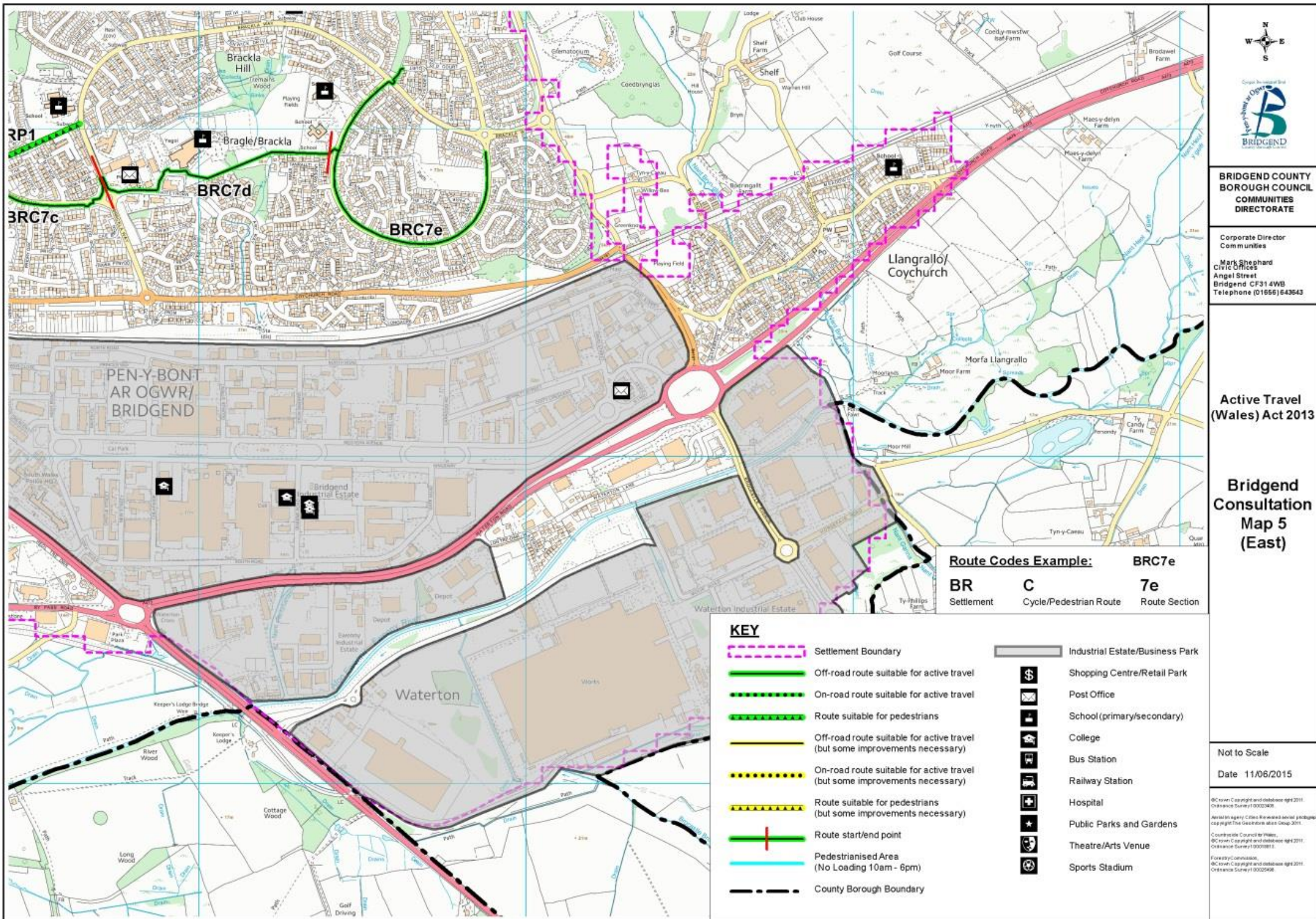




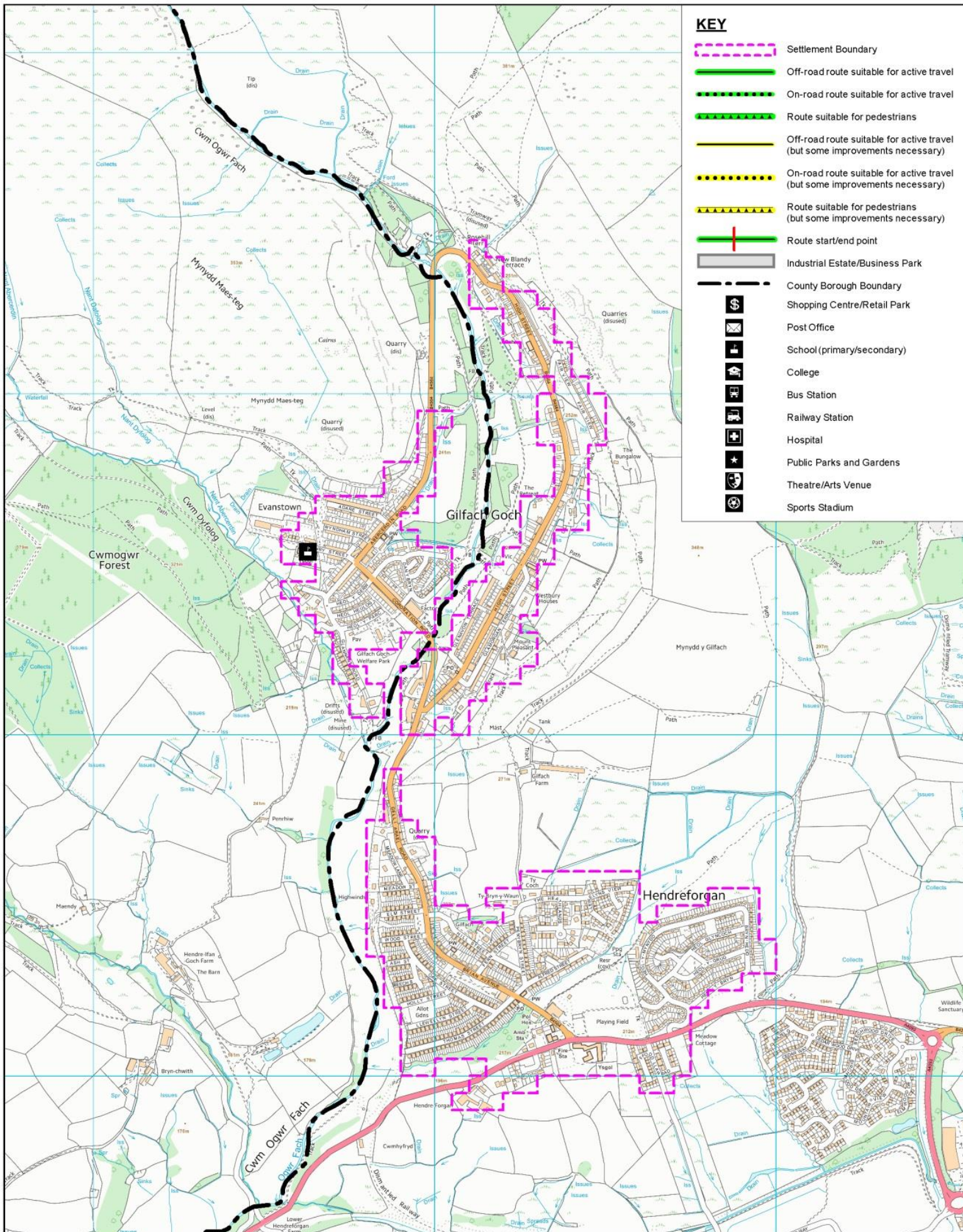












# KEY

- Settlement Boundary
- Off-road route suitable for active travel
- On-road route suitable for active travel
- Route suitable for pedestrians
- Off-road route suitable for active travel (but some improvements necessary)
- On-road route suitable for active travel (but some improvements necessary)
- Route suitable for pedestrians (but some improvements necessary)
- Route start/end point
- Industrial Estate/Business Park
- County Borough Boundary
- \$ Shopping Centre/Retail Park
- @ Post Office
- S School (primary/secondary)
- U College
- B Bus Station
- R Railway Station
- H Hospital
- P Public Parks and Gardens
- T Theatre/Arts Venue
- S Sports Stadium



COMMUNITIES DIRECTORATE

Mark Shephard  
Corporate Director

Civic Offices  
Angel Street  
Bridgend CF31 4WB  
Telephone 01656 643643

Not to Scale

Date 11/06/2015

©Crown Copyright and database right 2011.  
Ordnance Survey 100023405.  
Aerial Imagery: Cities Revealed aerial photography  
copyright The GeoInformation Group 2011.  
©Crown Copyright and database right 2011.  
Ordnance Survey 100018813.  
Forestry Commission.  
©Crown Copyright and database right 2011.  
Ordnance Survey 100025498.

















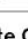



Active Travel (Wales) Act 2013

Gilfach Goch Consultation Map





# KEY

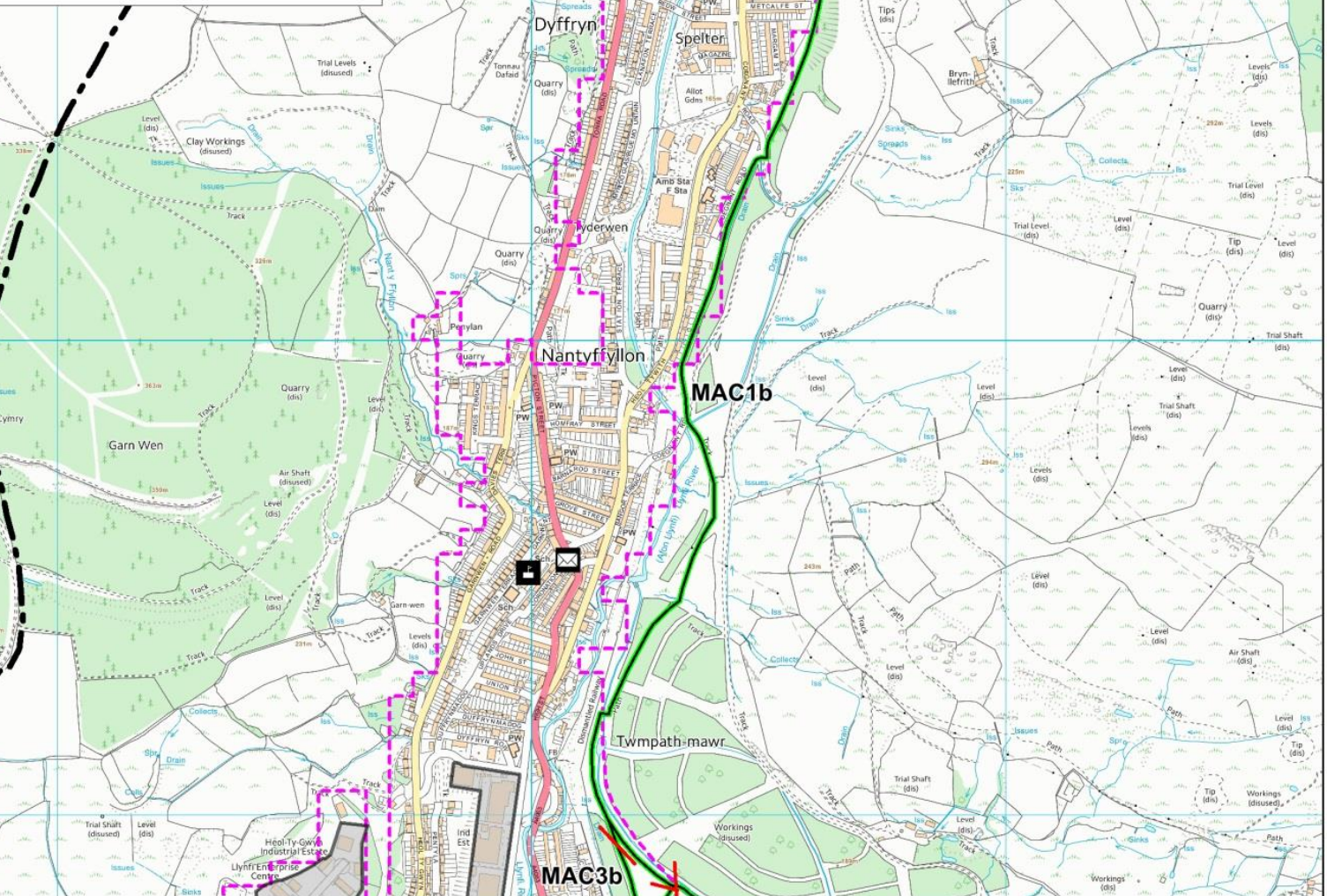
-  Settlement Boundary
-  Off-road route suitable for active travel
-  On-road route suitable for active travel
-  Route suitable for pedestrians
-  Off-road route suitable for active travel (but some improvements necessary)
-  On-road route suitable for active travel (but some improvements necessary)
-  Route suitable for pedestrians (but some improvements necessary)
-  Route start/end point
-  Industrial Estate/Business Park
-  County Borough Boundary
-  Shopping Centre/Retail Park
-  Post Office
-  School (primary/secondary)
-  College
-  Bus Station
-  Railway Station
-  Hospital
-  Public Parks and Gardens
-  Theatre/Arts Venue
-  Sports Stadium

## Route Codes Example:

<b>MA</b>	<b>C</b>	<b>1a</b>
Settlement	Cycle/Pedestrian Route	Route Section

**MAC1a**

**1a**



Not to Scale

Date 11/06/2015

COMMUNITIES DIRECTORATE

Mark Shephard  
Corporate Director

Civic Offices  
Angel Street  
Bridgend CF31 4WB  
Telephone 01656 643643

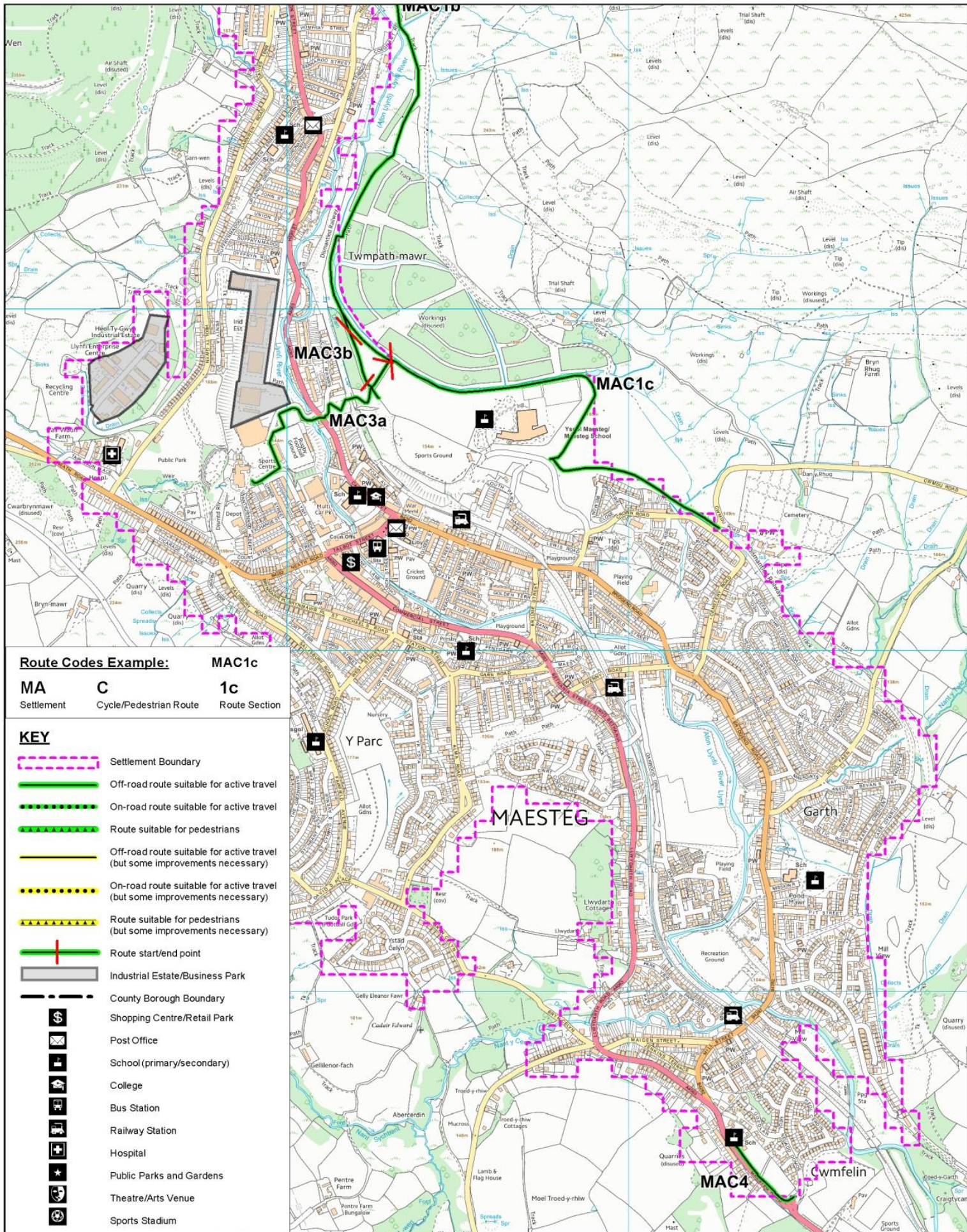
© Crown Copyright and database right 2011.  
Ordnance Survey 100023409.  
Aerial Imagery: Cities Revealed aerial photography  
copyright The GeoInformation Group 2011.  
© Countryside Council for Wales,  
© Crown Copyright and database right 2011.  
Ordnance Survey 100018813.  
Forestry Commission,  
© Crown Copyright and database right 2011.  
Ordnance Survey 100025498.

Active Travel (Wales) Act 2013

**Maesteg Consultation Map 1  
(Maesteg North)**







COMMUNITIES DIRECTORATE

Mark Shephard  
Corporate Director

Civic Offices  
Angel Street  
Bridgend CF31 4WB  
Telephone 01656 643643

© Crown Copyright and database right 2011.  
Ordnance Survey 100023409.  
Aerial Imagery: Cites Revealed aerial photography  
copyright The GeoInformation Group 2011.  
© Countryside Council for Wales.  
© Crown Copyright and database right 2011.  
Ordnance Survey 100018813.  
Forestry Commission.  
© Crown Copyright and database right 2011.  
Ordnance Survey 100025498.

Active Travel (Wales) Act 2013

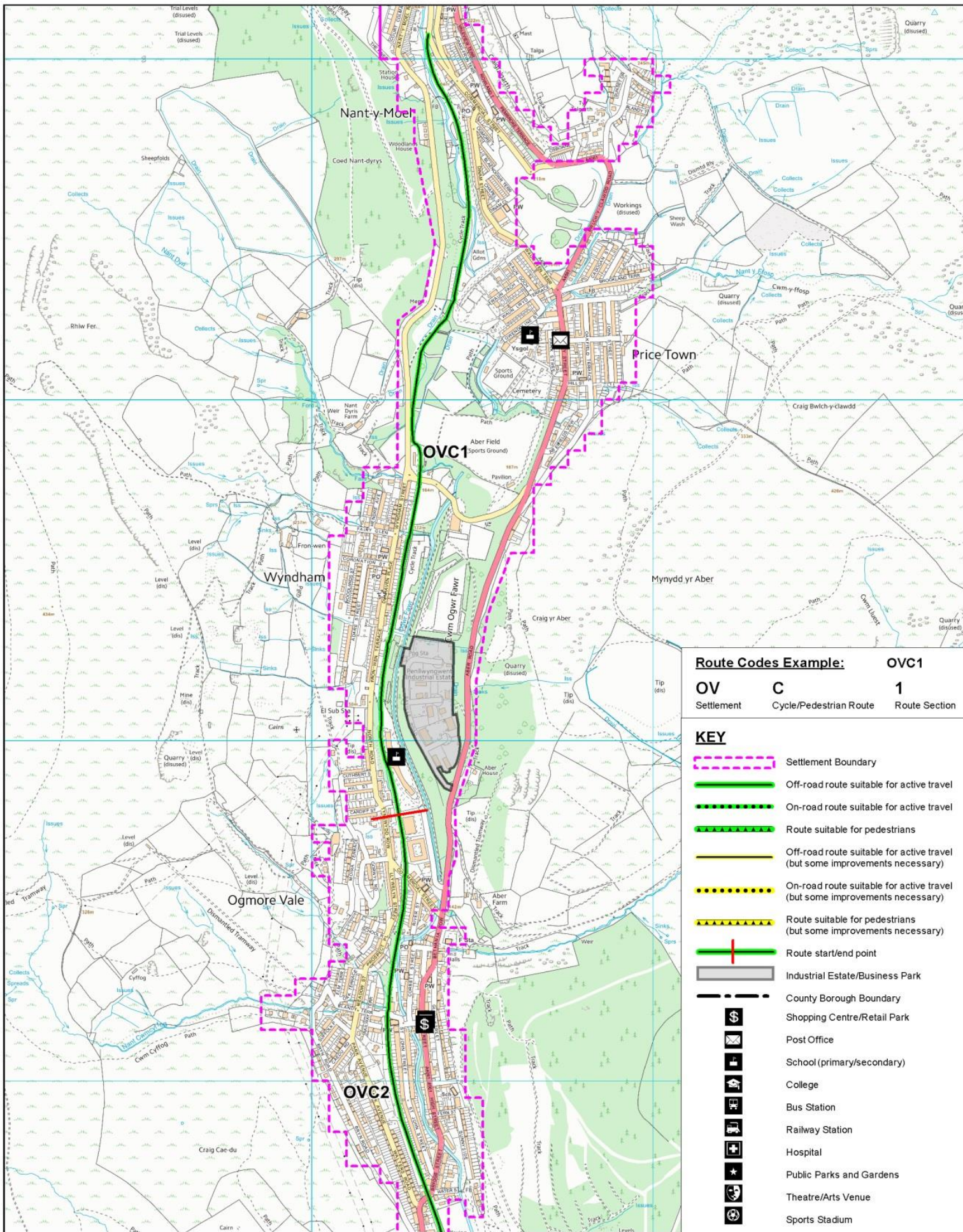
Maesteg Consultation Map 2  
(Maesteg South)



Not to Scale

Date 11/06/2015





#### Route Codes Example:

OVC1

OV  
Settlement

C  
Cycle/Pedestrian Route

1  
Route Section

#### KEY

- Settlement Boundary
- Off-road route suitable for active travel
- On-road route suitable for active travel
- Route suitable for pedestrians
- Off-road route suitable for active travel (but some improvements necessary)
- On-road route suitable for active travel (but some improvements necessary)
- Route suitable for pedestrians (but some improvements necessary)
- Route start/end point
- Industrial Estate/Business Park
- County Borough Boundary
- Shopping Centre/Retail Park
- Post Office
- School (primary/secondary)
- College
- Bus Station
- Railway Station
- Hospital
- Public Parks and Gardens
- Theatre/Arts Venue
- Sports Stadium



COMMUNITIES DIRECTORATE

Mark Shephard  
Corporate Director

Civic Offices  
Angel Street  
Bridgend CF31 4WB  
Telephone 01656 643643

© Crown Copyright and database right 2011.  
Ordnance Survey 100023405.  
Aerial Imagery: Cities Revealed aerial photography  
copyright The GeoInformation Group 2011.  
Countryside Council for Wales.  
© Crown Copyright and database right 2011.  
Ordnance Survey 100018813.  
Forestry Commission.  
© Crown Copyright and database right 2011.  
Ordnance Survey 100023406.

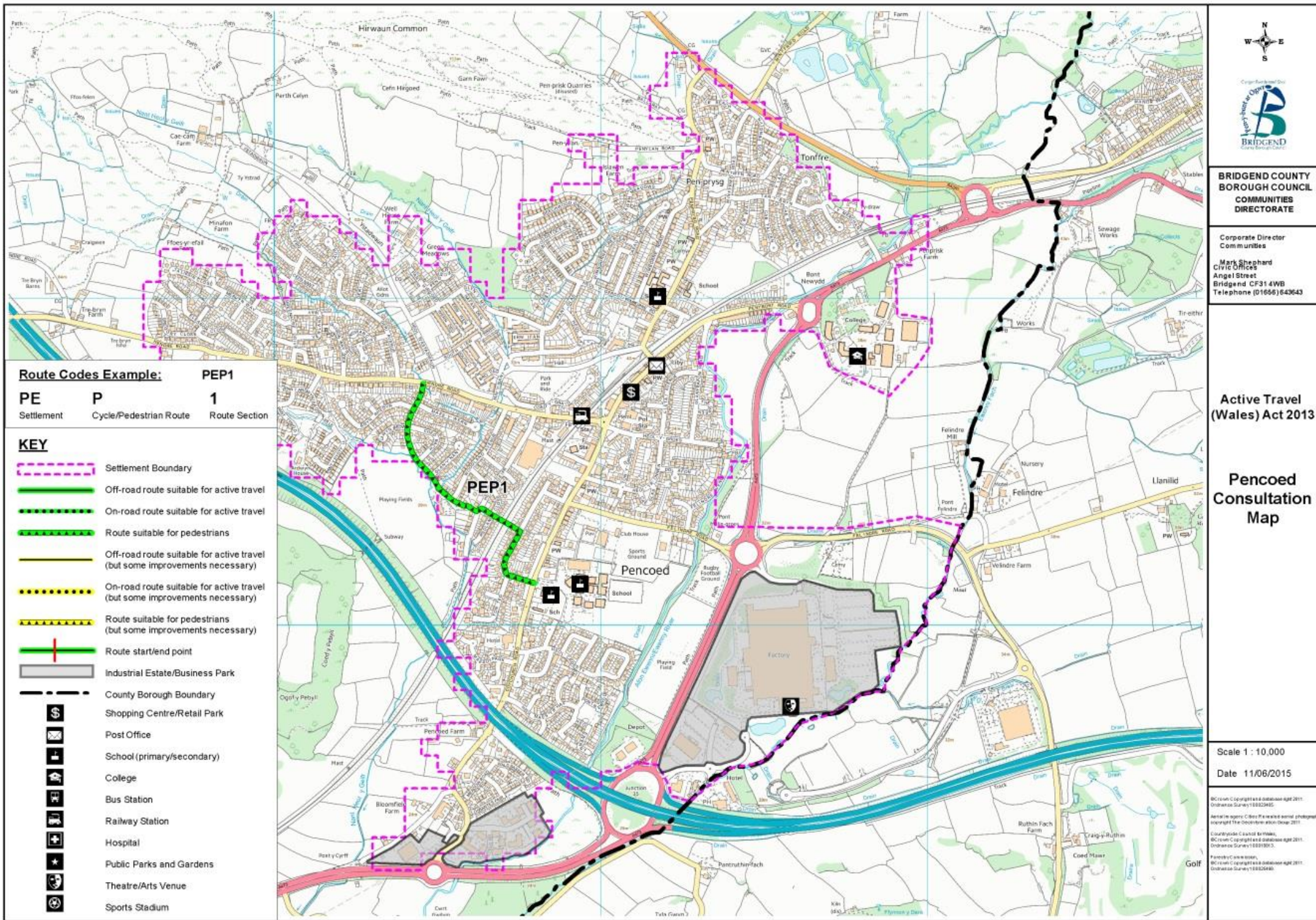
Active Travel (Wales) Act 2013

Ogmogre Vale Consultation Map

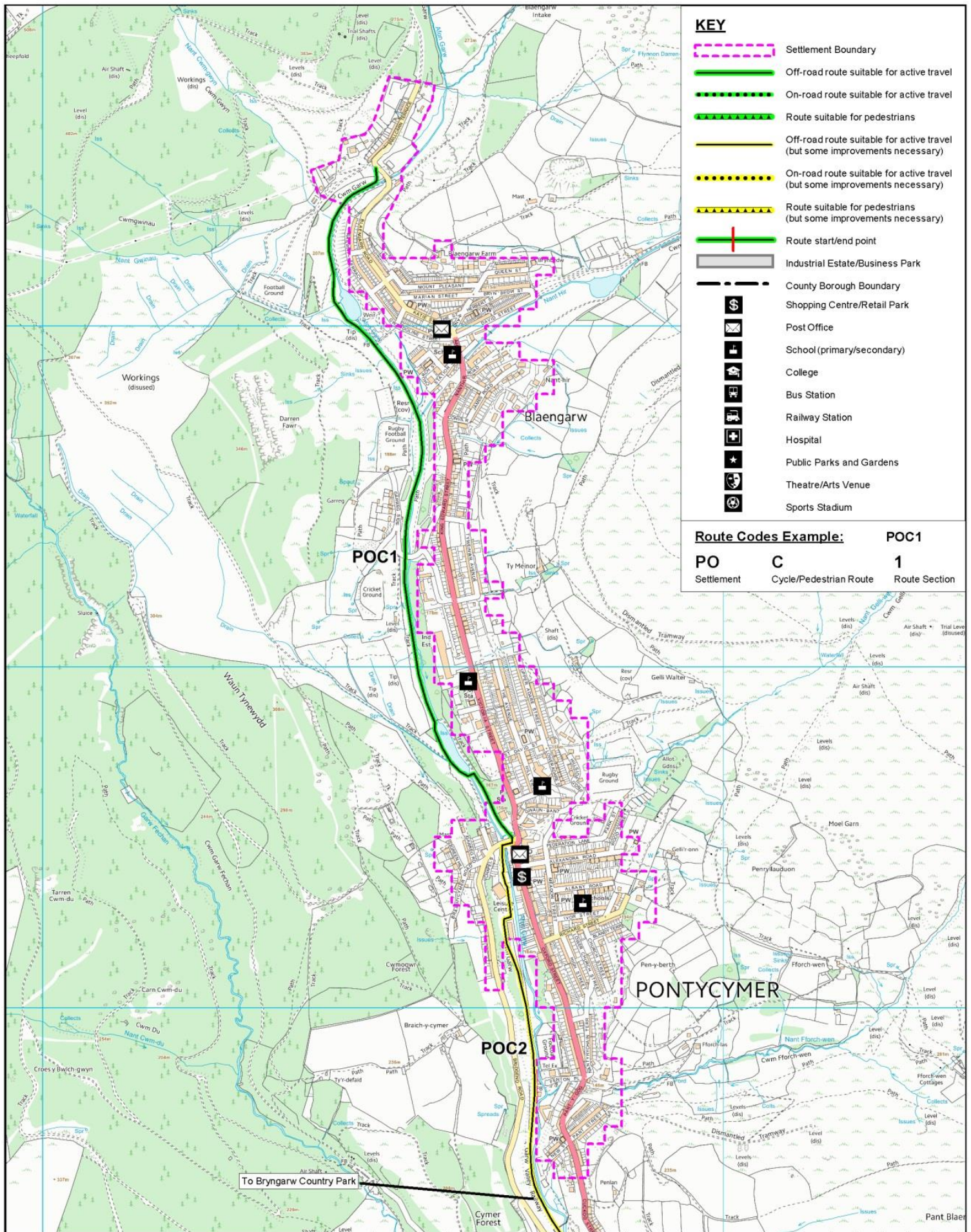


Not to Scale  
Date 11/06/2015









COMMUNITIES DIRECTORATE

Mark Shephard  
Corporate Director

Civic Offices  
Angel Street  
Bridgend CF31 4WB  
Telephone 01656 643643

© Crown Copyright and database right 2011.  
Ordnance Survey 100023405  
Partial Imagery: Cities Revealed aerial photography  
copyright The GeoInformation Group 2011  
Countryside Council for Wales  
© Crown Copyright and database right 2011.  
Ordnance Survey 100018813  
Forestry Commission,  
© Crown Copyright and database right 2011.  
Ordnance Survey 100025498

Active Travel (Wales) Act 2013

Pontycymer Consultation Map

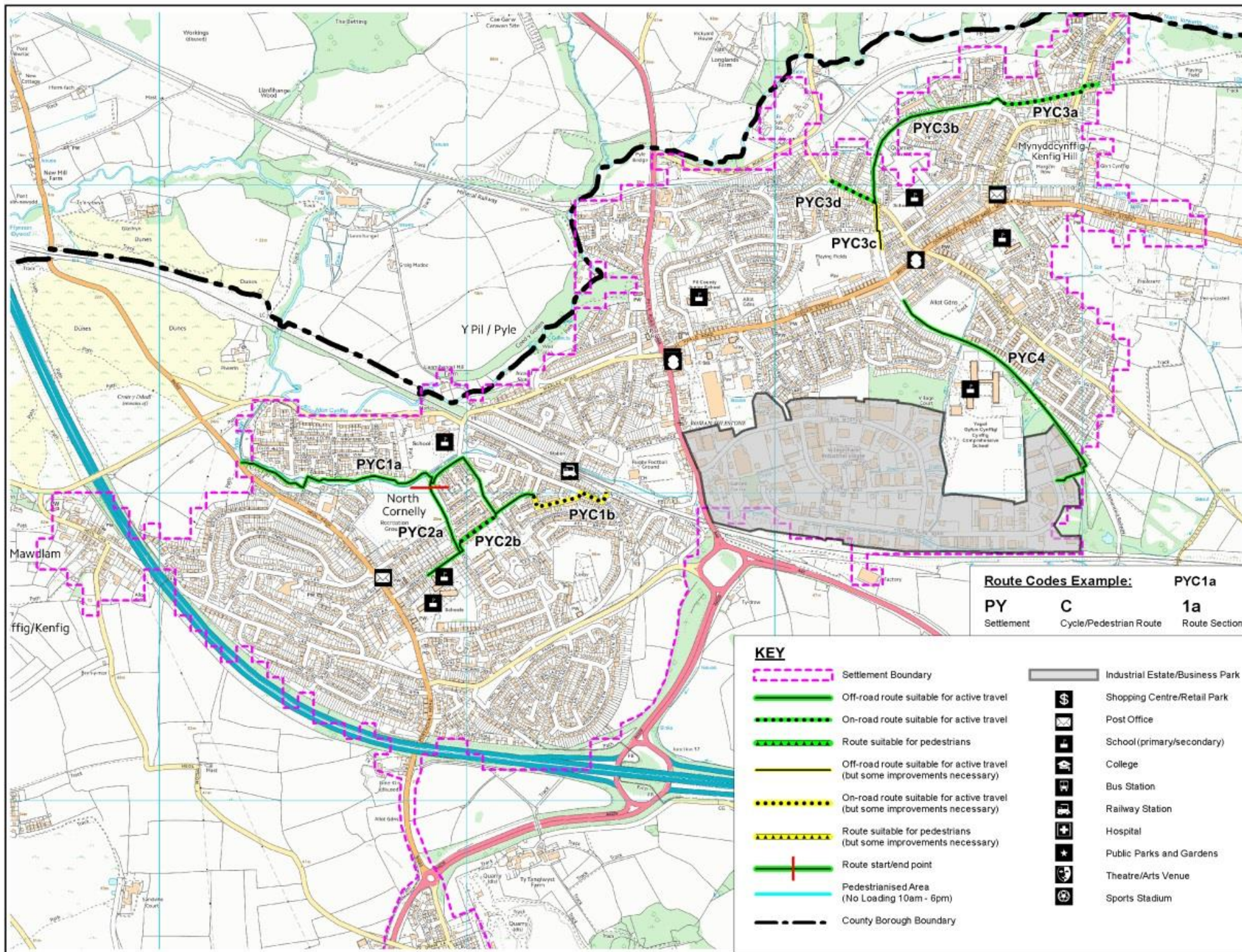


Not to Scale  
Date 11/06/2015









**BRIDGEND COUNTY  
BOROUGH COUNCIL  
COMMUNITIES  
DIRECTORATE**

Corporate Director  
Communities

Mark Shephard  
Civic Offices  
Angel Street  
Bridgend CF31 4WB  
Telephone (01656) 643643

**Active Travel  
(Wales) Act 2013**

**Pyle  
Consultation  
Map**

**Route Codes Example:**

PY	C	1a
Settlement	Cycle/Pedestrian Route	Route Section

### KEY

- Settlement Boundary
- Off-road route suitable for active travel
- On-road route suitable for active travel
- Route suitable for pedestrians
- Off-road route suitable for active travel (but some improvements necessary)
- On-road route suitable for active travel (but some improvements necessary)
- Route suitable for pedestrians (but some improvements necessary)
- Route start/end point
- Pedestrianised Area (No Loading 10am - 6pm)
- County Borough Boundary

- Industrial Estate/Business Park
- Shopping Centre/Retail Park
- Post Office
- School (primary/secondary)
- College
- Bus Station
- Railway Station
- Hospital
- Public Parks and Gardens
- Theatre/Arts Venue
- Sports Stadium

Not to Scale

Date 11/06/2015

BC Crown Copyright and database right 2011.  
Ordnance Survey 100023485.  
Aerial photography Crown Copyright and database right 2011.  
Copyright The Ordnance Survey 2011.  
Countryside Council for Wales,  
BC Crown Copyright and database right 2011.  
Ordnance Survey 100018003.  
Pennycook & Co. Ltd.,  
BC Crown Copyright and database right 2011.  
Ordnance Survey 100023485.