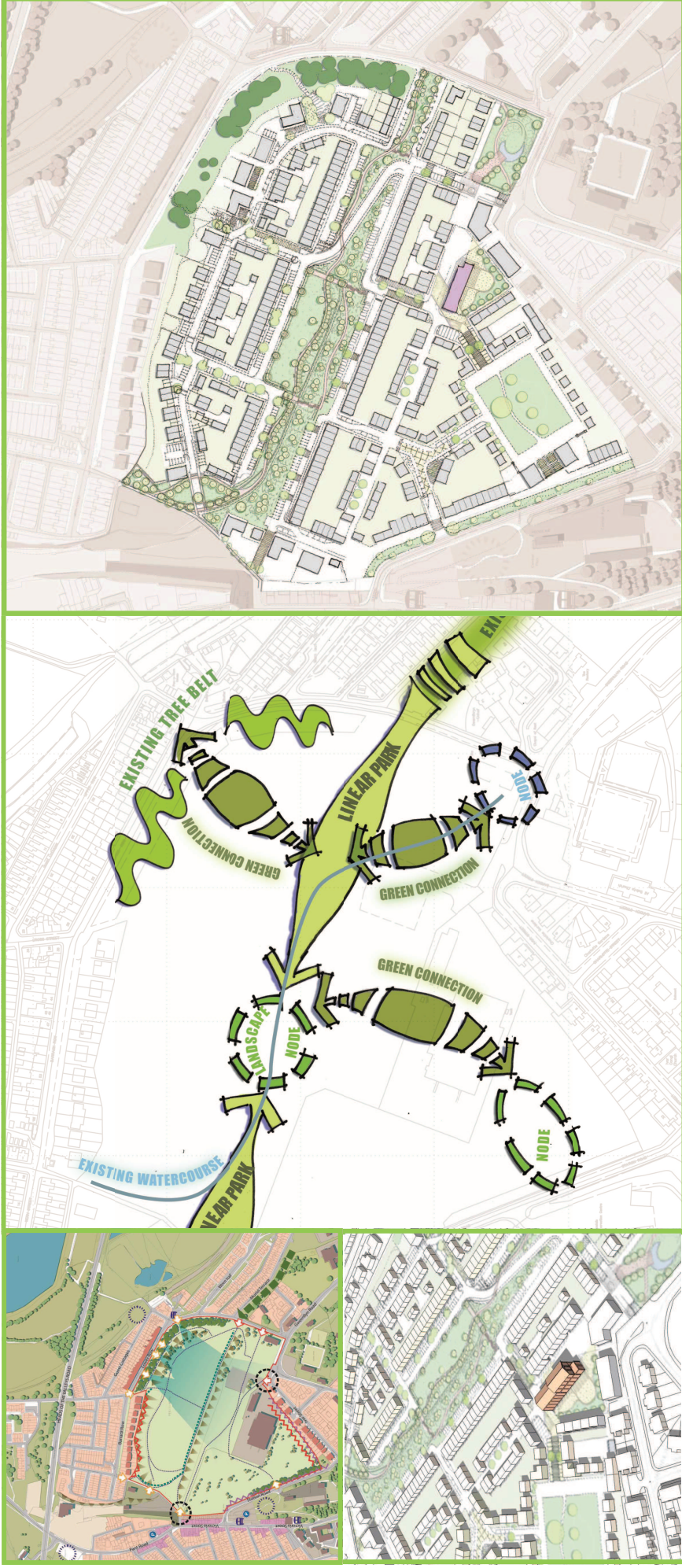


## APPENDIX B: GREEN INFRASTRUCTURE APPROACH CASE STUDIES

### CASE STUDY 2: PROJECT HEARTLAND: DOWLAIS



A core part of the vision for the regeneration of the site is to create a sustainable development with green infrastructure creation at the heart of the scheme. The proposal introduces green space and creates green links on the former industrial, brownfield site.

The GI network is based on existing landscape features, including mature trees and a watercourse, and reflects desire lines through the site connecting to offsite footways to encourage walking and cycling.

The redevelopment proposals for the former Dowlais Foundry Site were prepared on behalf of Methyr Tydfil Borough Council and the Welsh Assembly Government.

## APPENDIX B: GREEN INFRASTRUCTURE APPROACH CASE STUDIES

### CASE STUDY 2: PROJECT HEARTLAND: DOWLAIS

The key features of the GI network are:

A linear park provides recreational amenity to local residents at the heart of the proposal. This includes the existing watercourse retained as part of the SUDs proposal, alongside the retention of the existing tree belt within public open space;

An ecological habitat is proposed to enhance biodiversity, based around the existing watercourse. This linear habitat is connected to existing and proposed landscape features through a series of 'green connections' to aid wildlife movement;

'Green connections' are an integral part of a comprehensive movement strategy to create attractive and direct pedestrian and cycle routes. Parking bays form an interface between dwellings and mixed uses and the green spaces, with planting between bays to soften the visual impact of parked cars;

An important listed building, reflecting the rich history of the site, is retained within a public square and formal green space, connected to the wider GI network via 'green streets' and spaces;

Dwellings front the green links and corridors, enhancing the security and safety for pedestrians and cyclists with overlooking, and encouraging community use of the spaces and a sense of ownership;

Consistent build lines and rectilinear form defines the shape of the green spaces and ensures a strong sense of enclosure, with clear definition between public and private space.